



HEAVY DUTY LED BEACON SERIES

DESCRIPTION

The 18 LED Beacons come standard in a 6hz split cycle strobe pattern, meaning there's three flashes and a pause per second. When coupled with the reflectors, the heavy duty strobes become intense and are highly visible. In areas where safety is key, LED Lighting is one of the safest options for alerting someone of a dangerous piece of moving equipment.

Features and Benefits:

- Rugged Die-Cast Aluminum Housing
- 180 LEDs Create 360° Visibility
- Amber, Red, Blue, Green or White LEDs
- Two Modes: Simulated Rotation or Flashing Functions

SPECIFICATIONS

MECHANICAL

Fixture Weight:	2.96 lbs (1.34kg)
Shipping Weight:	4.88 lbs (2.21kg)
Mounting:	Single Bolt M10

TECHNICAL

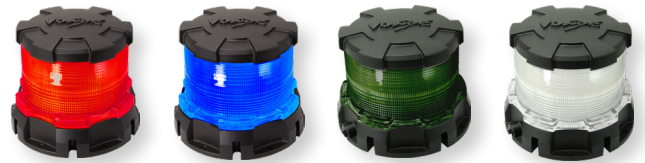
LED:	5050 (0.2W)/ 180LED
Color:	Red, Green, Blue, Amber, White
Lumens:	2,520 lm
Wattage:	36W
Amp Draw:	3.0A @12V 1.5A@24V
Operating Voltage:	12-32V DC
Operating Temperature:	-40°C ~ 80°C
Lifespan:	50,000 hrs
Connector:	3 Pin Deutsch

CONSTRUCTION

Housing:	Die-Cast 6061 Aluminum
Housing Color:	Black
Lens:	Polycarbonate
Surface Mounting:	5 x 5.5mm diameter on 148mm Bolt Circle
Pole Mounting:	3/4" NPT Female Input

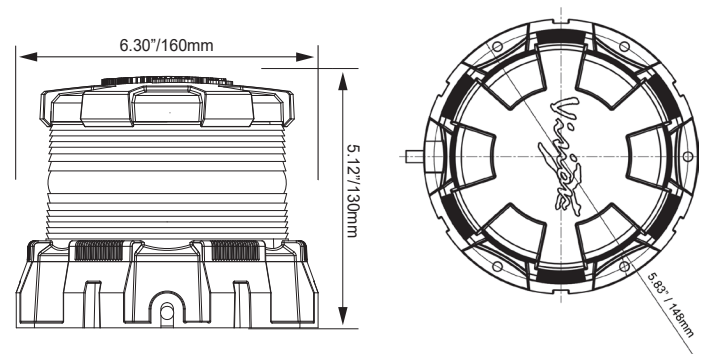
RATINGS

EMC Emission:	CISPR 25
Ingress Protection:	IP-68, IP69k
Vibration Rating:	15.6 Grms
Warranty:	3 Years



PART #:	COLOR
MIL-HDBR	Red
MIL-HDBG	Green
MIL-HDBB	Blue
MIL-HDBA	Amber
MIL-HDBW	White

2D DRAWING



WIRING

