



## Vision X Lighting's Next Generation of LED Light Bar the XPI Series

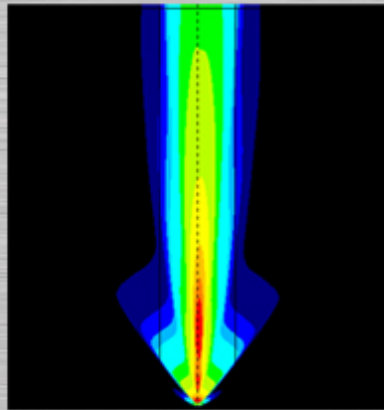
*Projecting Usable Light Further Than Ever Before Possible*



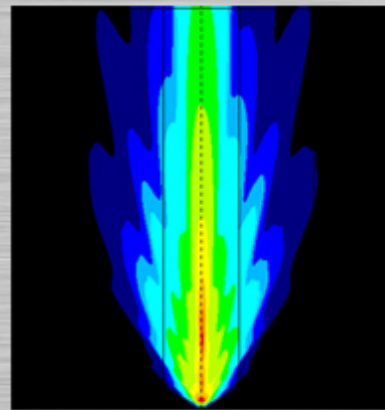
**May 15th - Auburn, WA** – Vision X Lighting introduces the Xmitter Prime Iris Light Bar series or XPI. This new generation of LED Light bars features two features not seen on a Vision X light bar before, IRIS reflector technology, and dual mounting, both patented feet mount and end mount brackets are included standard. The XPI series is launching with 7 different lengths, ranging from 11.5” to 51”, and a single beam option.

The 5-watt LEDs in these light bars are paired with IRIS reflector technology to project usable light further than ever before possible. IRIS reflector technology was first introduced with the Optimus Series in 2012, using deeply recessed reflectors to achieve unmatched distance in a light of that size. The XPI light bars create an unmatched distance option in LED Light Bars. The 27 LED light bar produces 1,600ft of usable light. Another new innovation in these light bars is the use of tilting reflectors, allowing the outer 3 LEDs on each end of the light bars (sizes above 6 LED) to tilt out to create a mixed or combo beam pattern. Increasing the spread of the light, tilting reflectors creates even more visibility for the driver.

## XPI LIGHT BAR IRIS REFLECTOR COMPARISON



**STANDARD**



**TILTED**

The XPI series offers several mounting options, Vision X's patented feet mounts, new end mount brackets, or pair the patented feet mounts with Vision X's billet tube mounts (available as an accessory) to mount to roll cages or any tube framing. New end mounts securely fasten to the housing with two bolts and lock washers per end, and allow for vertical adjustment once mounted.

### FEET MOUNT



### END MOUNT



Vision X Lighting's patented, premium LED lights feature an Extended Lifetime Ltd. Warranty to ensure the highest customer satisfaction.

#### XPI Series Features:

- Dual Mounting Options Standard (patented feet mount or end mount)
- Proprietary IRIS Reflector Technology Featuring Tilting Reflectors
- Tilting Reflectors Provide Mixed\Combo Beam Spread
- Xtreme Five Watt LED is Driven to 90% Efficiency
- Integrated Electronic Thermal Management
- Weatherproof Deutsch Connector
- Polycarbonate Lens

Item #	Part #	Description	Jobber
XPI-6	9889399	11" XMITTER PRIME IRIS LIGHT BAR 6 LED WITH STRAIGHT OPTICS	\$279.00

XPI-12M	9889405	25" XMITTER PRIME IRIS LIGHT BAR 12 LED WITH TILTED OUTER OPTICS FOR MIXED BEAM	\$499.00
XPI-15M	9889443	30" XMITTER PRIME IRIS LIGHT BAR 15 LED WITH TILTED REFLECTOR FOR MIXED BEAM	\$599.00
XPI-18M	9889412	35" XMITTER PRIME IRIS LIGHT BAR 18 LED WITH TILTED OUTER OPTICS FOR MIXED BEAM	\$699.00
XPI-21M	9890500	40" XMITTER PRIME IRIS LIGHT BAR 24 LED WITH TILTED OUTER OPTICS FOR MIXED BEAM	\$799.00
XPI-24M	9889429	46" XMITTER PRIME IRIS LIGHT BAR 24 LED WITH TILTED OUTER OPTICS FOR MIXED BEAM	\$899.00
XPI-27M	9889436	51" XMITTER PRIME IRIS LIGHT BAR 27 LED WITH TILTED OUTER OPTICS FOR MIXED BEAM	\$999.00

\*Wiring Harness Sold Separately For All Models -- \*\*40" Available July 2nd

###

**About Vision X Lighting:**

*Vision X Lighting, located in Seattle, Washington, was established in 1997 with the mission to revolutionize the lighting industry. Since that time, Vision X has created one of the largest premium lighting offerings in the world with hundreds of products and applications. Now, the military, border patrol, and even NASA have trusted Vision X on vehicles that cannot work with second best. Vision's leadership in lighting has landed them on the Inc. 500/5000 list for two consecutive years, ranking 563rd in 2013 with a 799% growth rate in 3 years, 10th overall in manufacturing, and Washington's fastest-growing manufacturing company. Vision X Lighting's commitment to its customers, dealers and product is unsurpassed. [www.visionxusa.com](http://www.visionxusa.com)*

###