



# SNOW PLOW LIGHT KIT

## 7" ROUND

### DESCRIPTION

The snow plow light kit from Vision X packs adaptability and performance into a slim and easily mounted solution. Each light has three different operation modes: high, low, and halo (daytime running lights).

The XIL-7RDSPKIT was designed to be mounted above snow plow blades in order to help the operator see as much of the roadway as possible to ensure accurate removal of snow and slush. It includes a mount for marker lights on the bracket (not included).

#### Features and Benefits:

- DOT Compliant Fixtures
- Run Low or High Independently or At the Same Time (P-HLI4)
- Two Wiring Harnesses with H4 Plugs Included
- Anti-Glare Polycarbonate Cover to Prevent Snow Buildup
- Adjustable Mounting Bracket



### SPECIFICATIONS

#### MECHANICAL

<b>Fixture Weight:</b>	9.5 lbs (4.31kg)
<b>Shipping Weight:</b>	10.7 lbs (4.85kg)
<b>Dimensions:</b>	6.96" x 6.96" x 3.86"
<b>Mounting:</b>	Bolt-on Assembly

#### TECHNICAL

<b>LED:</b>	High: XML (Cree) 10W x2 Low: Altilon-C4 (Philips) 13W x1 Halo: Luxeon 3014 (Philips) 0.2W x30
<b>Raw Lumens:</b>	8,420 lm
<b>Effective Lumens:</b>	5,200 lm
<b>Wattage:</b>	84W
<b>Amp Draw:</b>	7A@12V
<b>LED Color:</b>	White
<b>Operating Voltage:</b>	9-32V DC
<b>Operating Temperature:</b>	-40°C ~ 80°C
<b>Lifespan:</b>	50,000 hrs
<b>Polarity:</b>	Reverse Polarity Protection
<b>Connector:</b>	-

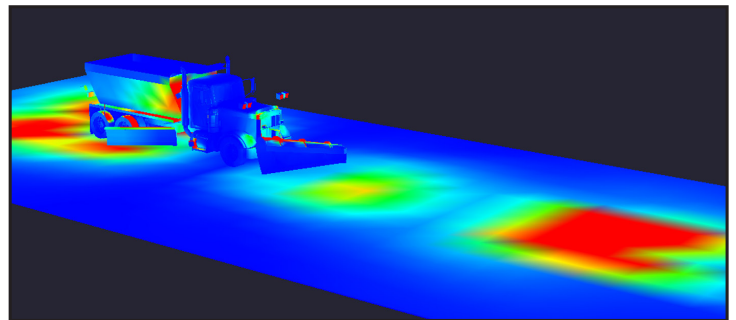
#### CONSTRUCTION

<b>Housing:</b>	Die-Cast 6061 Aluminum
<b>Finish:</b>	Gloss Black
<b>Lens:</b>	Polycarbonate

ITEM #:	PART#	BEAM	HALO COLOR
XIL-7RDSPKIT	9903972	Driving	White
XIL-7RDASPKIT	-	Driving	Amber

#### KIT INCLUDES

- 2x 7" LED Lights with High-Low-Halo Beams
- 2x Mounting Brackets



#### RATINGS

<b>EMC Emission:</b>	(CISPR 25) Edition 3.0 (2008-03) Class 3
<b>Ingress Protection:</b>	IP-68
<b>Vibration Rating:</b>	15.6 Grms
<b>Warranty:</b>	3 Years
<b>DOT Compliant:</b>	✓