



INSTALLATION INSTRUCTIONS

CHASER REAR LED SYSTEM

Installation Instructions & User's Manual



About The Vision X Chaser Bar



FEATURES

1. Low profile design.
2. High output color LEDs.
3. Multi function rear lighting.

CHASER BAR SPECIFICATIONS

1. Warranty : Extended
2. Amp Draw : 12.5A @ 12V DC
3. Input Voltage : 9-32V DC
4. Beam Patterns : Running & Brake light built in.
5. LED Lifespan : 50,000 Hours

PREPARATION

1. We recommend completely reading instructions before installing.
2. Consult your local state regulatory agency regarding the use of LED lighting.
3. The placement of LED lighting should not restrict airflow to the radiator, or block head lamps, turn signals, or parking lights.

MAINTENANCE

1. All Vision X models have been designed for maintenance free use. In the case an LED lamp or other part replacement is needed please contact your authorized service center.

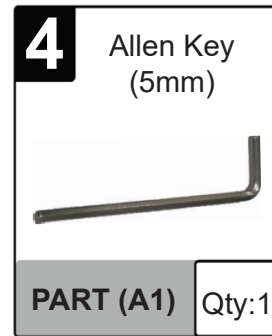
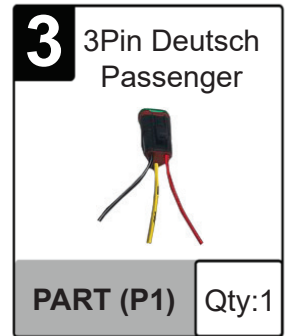
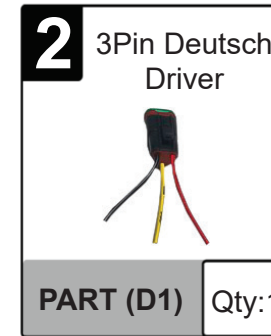


Table 1:
MOUNTING FOOT
QTY

LED	21LED	27LED
# of Feet	4	5

WARNINGS

As with many other high-tech products, this VISION X LED requires a bit of attention before you can use it. Please read the accompanying information carefully first.

1. Don't stare directly into the light or shine directly into the eyes of another person as this may cause temporary loss of vision.
2. Never disassemble the products, as all parts must be factory serviced to insure proper operation.
3. Don't interchange the parts inside this light with other products.
4. The LED light is to be mounted on the vehicle only in a vertical, bottom mounting, or in a suspended position.
5. After turning on the light, the body might be hot enough to warrant a burn risk. Be careful when you touch the body after turning on the light for a long period of time.
6. Use the supplied wire harness for electrical installation.
7. The LED light must not adversely affect the performance of low beam, high beam, engine cooling or the driver's view.

CHASER REAR LED SYSTEM



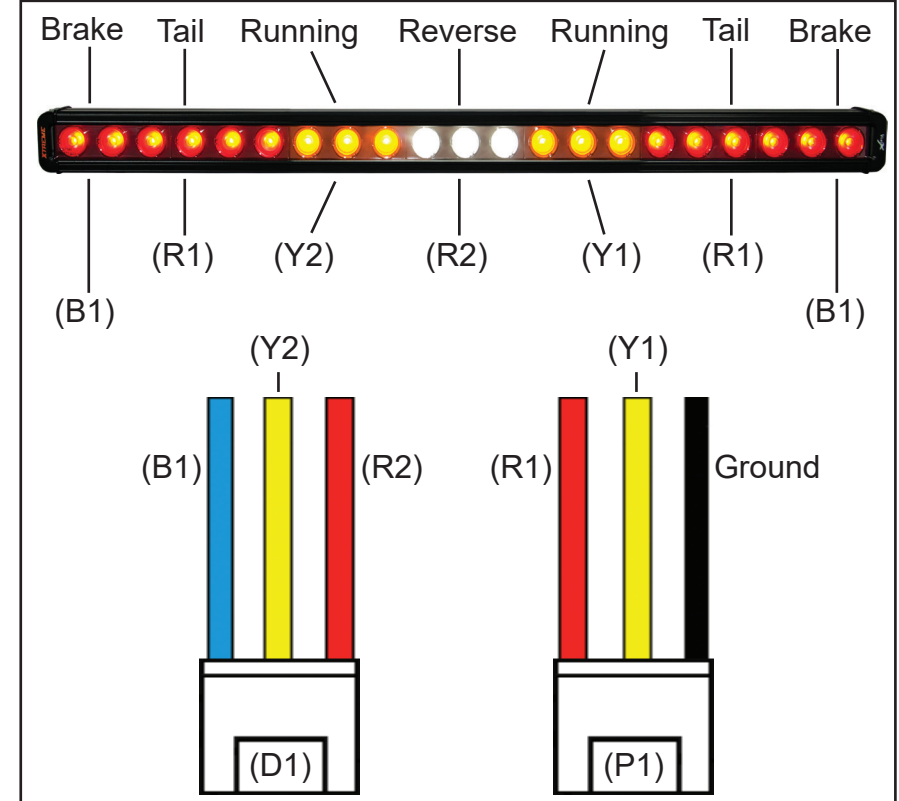
WIRING INSTALLATION INSTRUCTION

1. The Chaser Bar comes with two unique 3-Pin deutsch connectors, Driver side Part (D1) and Passenger side Part (P1). See [Wiring Diagram]
2. The Ground wire is Black and located on the Passenger side deutsch (P1).
3. On the Passenger side Deutsch (P1), connect the Red wire Part (R1) to the Tail lights or an existing power source. This wire lights up both ends of the bar.
4. On the Driver side deutsch (D1), tap the Blue wire Part (B1) to your brakes. This wire engages the brake light for both ends of the bar.
5. Yellow wires Part (Y1 & Y2) on both the Driver and Passenger deutsch connectors light up your Amber Running lights. (Y1) is for the Passenger side Amber LEDs, and (Y2) is for the Driver side Amber LEDs. Tap these into an existing power source.
6. The Red wire Part (R2) on the Driver side Deutsch (D1) powers the center 3 White LEDs. This can be used as a Reverse light on its own aux switch, or tapped into an existing power source as a running light with the Ambers.

MANUFACTURER RECOMMENDATION

For those unfamiliar with electrical wiring on vehicles, Vision X recommends that all LED Lighting products are professionally installed.

WIRING DIAGRAM:



COMPONENTS KEY

- Part (D1) Driver side Deutsch
- Part (P1) Passenger side Deutsch
- Part (R1) Tail Light: [Red Wire]
 - a. Lights up both sides of the Bar
- Part (B1) Brake light: [Blue Wire]
 - a. Lights up both sides of the Bar
- Part (R2) Reverse light/optional: [Red Wire]
 - a. Center 3 White LEDs:
- Part (Y1) Amber Running light: [Yellow Wire]
 - a. Passenger side
- Part (Y2) Amber Running light: [Yellow Wire]
 - a. Driver side
- Part Ground: [Black Wire]

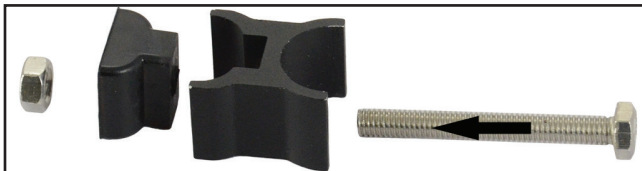
VISION X



WARNING: Bolts, Nuts, and Washers are Stainless Steel. DO NOT USE Pneumatic or Electric Tools to Tighten and Loosen. The Hardware Will Permanently Lock Together.

MOUNTING INSTALLATION INSTRUCTION FOR FEET

1. Start by setting the light bar in the location that you plan to mount it in. Mark each end of the light bar and measure the length.
2. Depending on the length of your light bar, you will have a certain number of mounting feet (F1) included in the packaging. These feet fit into grooves on the back of the light bar. [See Figure 1]
3. Place each mounting foot (F1) (with bolt head pointing into light bar) into the feet grooves on the back of the light bar. [See Figure 2]
4. Mark the location of each mounting feet on your vehicle. Drill holes for each. The feet can slide inside the grooves, letting you fine tune the location.
5. Remove the nut from the feet bolt, and place the light bar onto your vehicle, line up the bolts with the previously drilled holes. [See Figure 2]
6. Securely tighten the nut to the mounting feet bolt.



Disassembled Foot Mount, included with every Vision X LED Light Bar. Comes assembled.

LIGHT ANGLE ADJUSTMENT

1. Use the provided 5mm Allen wrench (A1) to loosen both the Allen bolts on each side the light bar. Once desired angle is achieved, tighten the bolts. [See Figure 3]

TIP: For complete application guide see website

CHASER BAR

CHASER
REAR LED SYSTEM

Fig. 1



Fig. 2

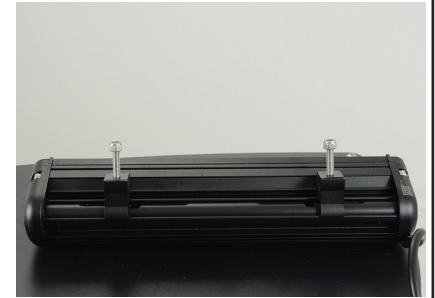


Fig. 3



TIP:

Vision X recommends the use of liquid thread-locker, or Loctite, to ensure that every bolt and nut are safely secured.



You May Also Be Interested In:



PRO PODS
Comes in a variety of colors



Part # - 9888811
Item # - XIL-LPECM
Xmitter Lo Pro Prime Xtreme
Series Light Bar End Cap Mount
Bolt Set



LIGHT CANNON SERIES
Visit www.visionxusa.com to see full range.



SECURITY BOLT
Available in multiple sizes



SECURITY NUT
Available in multiple sizes