



50W JUNCTION BOX SERIES

CONVEYOR BELT LIGHTING

NON-OPTIC

DESCRIPTION

To meet Dark Sky Compliant requirements, the lighting fixture must be completely shielded and keep light output below the horizontal plane. Higher color temperatures brighten the night environment as opposed to lower, or warmer, color temperatures of emitted light. This 50 watt junction box series features a bezel that eliminates stray light and emits a color temperature of 2800K.

Features and Benefits:

- All In One LED Light and Junction Box
- Built-in Battery Backup System Available
- 180° Ultra Wide Flood Beam Pattern
- UL Certified, IP-68/IP69K Rating, UL 1598A Marine

SPECIFICATIONS

MECHANICAL:

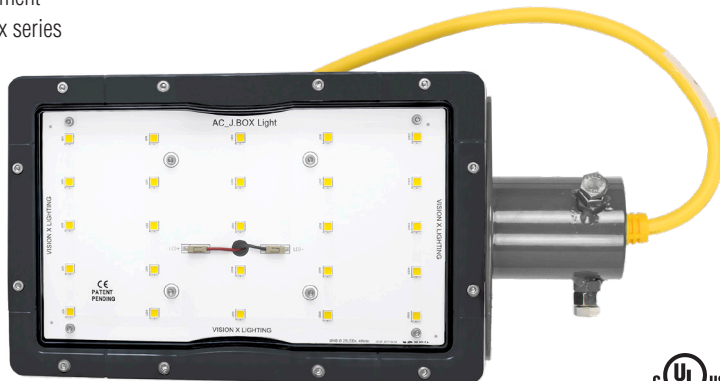
Fixture Weight:	8 lbs (3.8kg)
Shipping Weight:	10 lbs (4.5kg)
Mounting:	Universal Slip Fitting

TECHNICAL:

LED:	MHB-B(CREE)
Lumens:	5,000 lm
Beam Pattern:	180°
Wattage:	50W
Amp Draw:	0.43A @ 115VAC 0.22A @ 230VAC 0.18A @ 277VAC
Color Temperature:	2800 Kelvin
Operating Voltage:	90-305V AC 127-431V DC
Operating Temp:	-40°C ~ 60°C
Lifespan:	50,000 hrs
Frequency:	47-63Hz
THD:	<20% (@load≥50% 115VAC,230VAC) (@load≥75% / 277VAC)
Power Factor:	≥ 0.98/115VAC ≥ 0.95/230VAC ≥ 0.92/277VAC
Short Circuit:	Constant Current Limiting, Recovers Automatically After Fault Condition is Removed
Polarity:	Reverse Polarity Protection

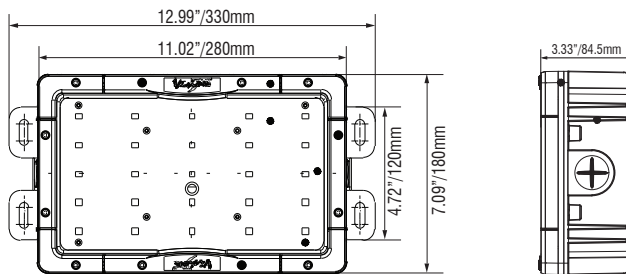
CONSTRUCTION:

Housing:	Die-Cast 6061 Aluminum
Finish:	Gloss Grey
Lens:	Polycarbonate Lens
Battery Back-Up:	Version Available



PART #:	DESCRIPTION
LSG0225180S2QC.2800	50W JBOX & 2" Slip Fitting
LSG0225180S2.5QC.2800	50W JBOX & 2.5" Slip Fitting
LSG0225180S3QC.2800	50W JBOX & 3" Slip Fitting

2D DRAWING:



RATINGS:

EMC Emission:	Compliance to EN55022, EN61000-3-2 Class A, EN61000-3-3
EMC Immunity:	Compliance to EN55024, EN61000-4-2,3,4,5,6,8,11; light industry level (surge 2KV), criteria A
Ingress Protection:	IP-68, IP69K
UL 1598A Marine:	✓
Vibration Rating:	15.6 Grms
Warranty:	5 Years



50W JUNCTION BOX SERIES

CONVEYOR BELT LIGHTING

OPTICS

DESCRIPTION

To meet Dark Sky Compliant requirements, the lighting fixture must be completely shielded and keep light output below the horizontal plane. Higher color temperatures brighten the night environment as opposed to lower, or warmer, color temperatures of emitted light. This 50 watt junction box series features a bezel that eliminates stray light and emits a color temperature of 2800K.

Features and Benefits:

- All In One LED Light and Junction Box
- Built-in Battery Backup System Available
- Multiple Beam Patterns
- UL Certified, IP-68/IP69K Rating, UL 1598A Marine

SPECIFICATIONS

MECHANICAL:

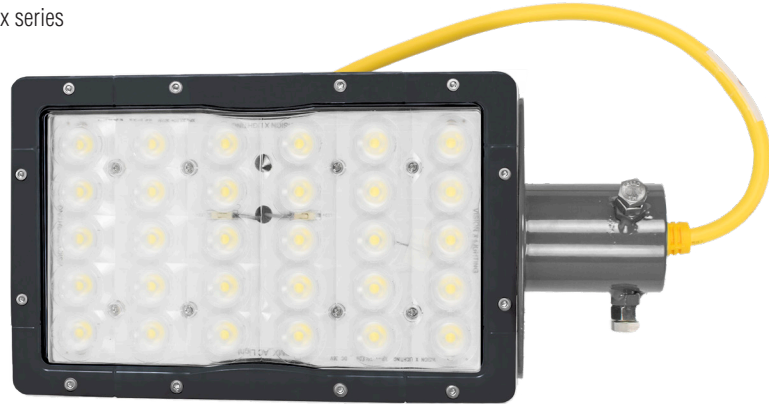
Fixture Weight:	8 lbs (3.8kg)
Shipping Weight:	10 lbs (4.5kg)
Mounting:	Universal Slip Fitting

TECHNICAL:

LED:	XPG-3 (CREE)
Lumens:	4,000 lm
Beam Pattern:	10° 25° 40° 60° 90°
Wattage:	50W
Amp Draw:	0.43A @ 115VAC 0.22A @ 230VAC 0.18A @ 277VAC
Color Temperature:	2800 Kelvin
Operating Voltage:	90-305V AC 127-431V DC
Operating Temp:	-40°C ~ 60°C
Lifespan:	50,000 hrs
Frequency:	47-63Hz
THD:	<20% (@load≥50% 115VAC,230VAC) (@load≥75% / 277VAC)
Power Factor:	≥ 0.98/115VAC ≥ 0.95/230VAC ≥ 0.92/277VAC
Short Circuit:	Constant Current Limiting, Recovers Automatically After Fault Condition is Removed
Polarity:	Reverse Polarity Protection

CONSTRUCTION:

Housing:	Die-Cast 6061 Aluminum
Finish:	Gloss Grey
Lens:	Polycarbonate Lens
Battery Back-Up:	Version Available



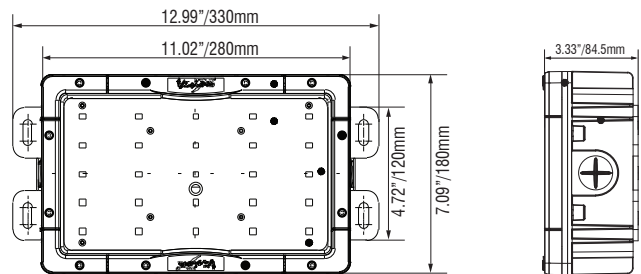
PART #:

DESCRIPTION

LSG0330xxS2QC.2800	50W JBOX Optic & 2" Slip Fitting
LSG0330xxS2.5QC.2800	50W JBOX Optic & 2.5" Slip Fitting
LSG0330xxS3QC.2800	50W JBOX Optic & 3" Slip Fitting

* xx designates optics beam pattern degree options: 10°, 25°, 40°, 60°, 90°

2D DRAWING:



RATINGS:

EMC Emission:	Compliance to EN55022, EN61000-3-2 Class A, EN61000-3-3
EMC Immunity:	Compliance to EN55024, EN61000-4-2,3,4,5,6,8,11; light industry level (surge 2KV), criteria A
Ingress Protection:	IP-68, IP69k
UL 1598A Marine:	✓
Vibration Rating:	15.6 Grms
Warranty:	5 Years