



SCENE WORK LED LIGHT

POLE-MOUNTED | 10,000 LUMENS

An adaptation of our WSL Series, this scene area pole light provides the same technical qualities and an additional die-cast aluminum housing with a 3/4" pipe pole mount swivel attachment.

Powered by 21 ultra-bright LED's, the sleek surface mounted light is provided in 10,000 lumen and 22,500 lumen models. Both WSL Surface Mount scene light models include two rows of wide patterned LED's for close in illumination and two rows of optically focused LED's for midrange and distance illumination. All LED's have internal downward aiming to provide daylight type ground and area illumination in a compact, flat surface mount housing. Mounting requires just a single 1" hole for wiring and four mounting screws. The WSL Surface Mount LED scene light fixture guarantees longer service light and 2-3 times the light output of halogen and HID pole light alternatives.

Features and Benefits

- 3 optical segments providing close area, wide-medium, and long-range lighting in a single fixture.
- 3/4" pipe pole mount swivel suitable for most pole types. (Additional adapters available)
- 10,000 lumen and 20,500 lumen output models.



MECHANICAL

Fixture Weight:	7.28 lbs (3.3kg)
Mounting:	3.4" Pole Mount

TECHNICAL

Raw Lumens:	10,000 lm
Effective Lumens:	6,500 lm
Wattage:	75W
Amp Draw:	6.25A @12V
Color Temperature:	5900 Kelvin
Operating Voltage:	9-32v DC 90-277v AC
Operating Temperature:	-40°C ~ 85°C
Lifespan:	50,000 hrs
Polarity:	Reverse Polarity Protection

CONSTRUCTION

Housing:	Die-Cast 6061 Aluminum
Handle:	Top Rear
Finish:	ABS Chrome bezel
Lens:	Polycarbonate
Housing Color:	Black Standard, White Optional

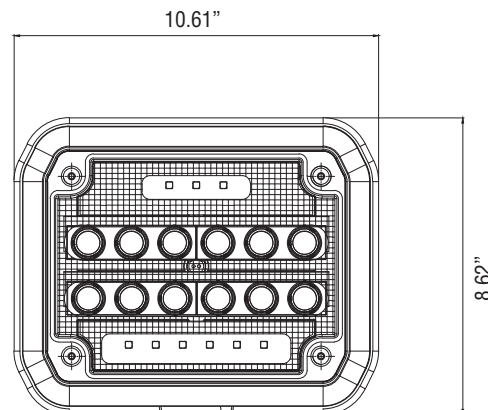
RATINGS

EMC Emission:	(CISPR 25) Edition 3.0 (2008-03) Class 3
Ingress Protection:	IP-68, IP69k
Vibration Rating:	8.6 Grms
Warranty:	3 Years

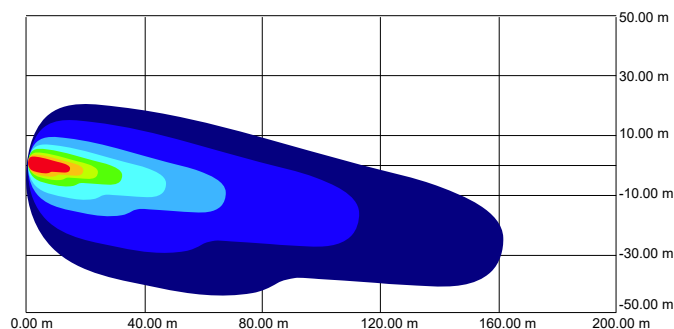
PART #	WATTAGE	VOLTAGE
WSL-P75M	75W	9-32v DC
WSL-P75MPS	75W	90-277v AC

Optional switch on light head available

2D DRAWING



BEAM PATTERN (Side View)





SCENE WORK LED LIGHT

POLE-MOUNTED | 20,500 LUMENS

An adaptation of our WSL Series, this scene area pole light provides the same technical qualities and an additional die-cast aluminum housing with a 3/4" pipe pole mount swivel attachment.

Powered by 21 ultra-bright LED's, the sleek surface mounted light is provided in 10,000 lumen and 22,500 lumen models. Both WSL Surface Mount scene light models include two rows of wide patterned LED's for close in illumination and two rows of optically focused LED's for midrange and distance illumination. All LED's have internal downward aiming to provide daylight type ground and area illumination in a compact, flat surface mount housing. Mounting requires just a single 1" hole for wiring and four mounting screws. The WSL Surface Mount LED scene light fixture guarantees longer service light and 2-3 times the light output of halogen and HID pole light alternatives.

Features and Benefits

- 3 optical segments providing close area, wide-medium, and long-range lighting in a single fixture.
- 3/4" pipe pole mount swivel suitable for most pole types. (Additional adapters available)
- 10,000 lumen and 20,500 lumen output models.



MECHANICAL

Fixture Weight:	7.28 lbs (3.3kg)
Mounting:	3/4" Pole Mount

TECHNICAL

Raw Lumens:	20,500 lm
Effective Lumens:	12,290 lm
Wattage:	125W
Amp Draw:	10.41A @ 12V
Color Temperature:	5900 Kelvin
Operating Voltage:	9-32V DC 90-277v AC
Operating Temperature:	-40°C ~ 85°C
Lifespan:	50,000 hrs
Polarity:	Reverse Polarity Protection

CONSTRUCTION

Housing:	Die-Cast 6061 Aluminum
Handle:	Top Rear
Finish:	ABS Chrome Bezel
Lens:	Polycarbonate
Housing Color:	Black Standard, White Optional

RATINGS

EMC Emission:	(CISPR 25) Edition 3.0 (2008-03) Class 3
Ingress Protection:	IP-68, IP69k
Vibration Rating:	8.6 Grms
Warranty:	3 Years

PART

WATTAGE

VOLTAGE

WSL-P125M

125W

9-32v DC

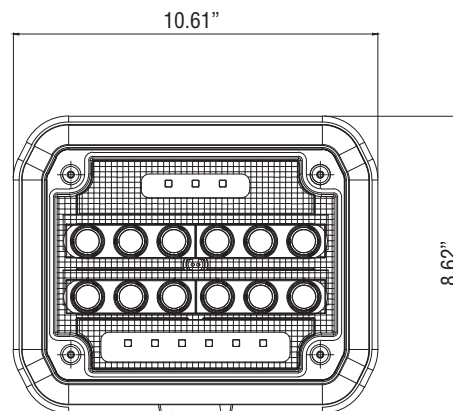
WSL-P125MPS

125W

90-277v AC

Optional switch on light head available

2D DRAWING



BEAM PATTERN (Side View)

