

VEHICLE IDENTIFICATION LED BOARDS

VXINDUSTRIAL.COM



LED | LIGHTING CATALOG



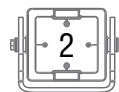
LIGHTING SOLUTIONS

FOR MINING CLASS VEHICLES AND EQUIPMENT

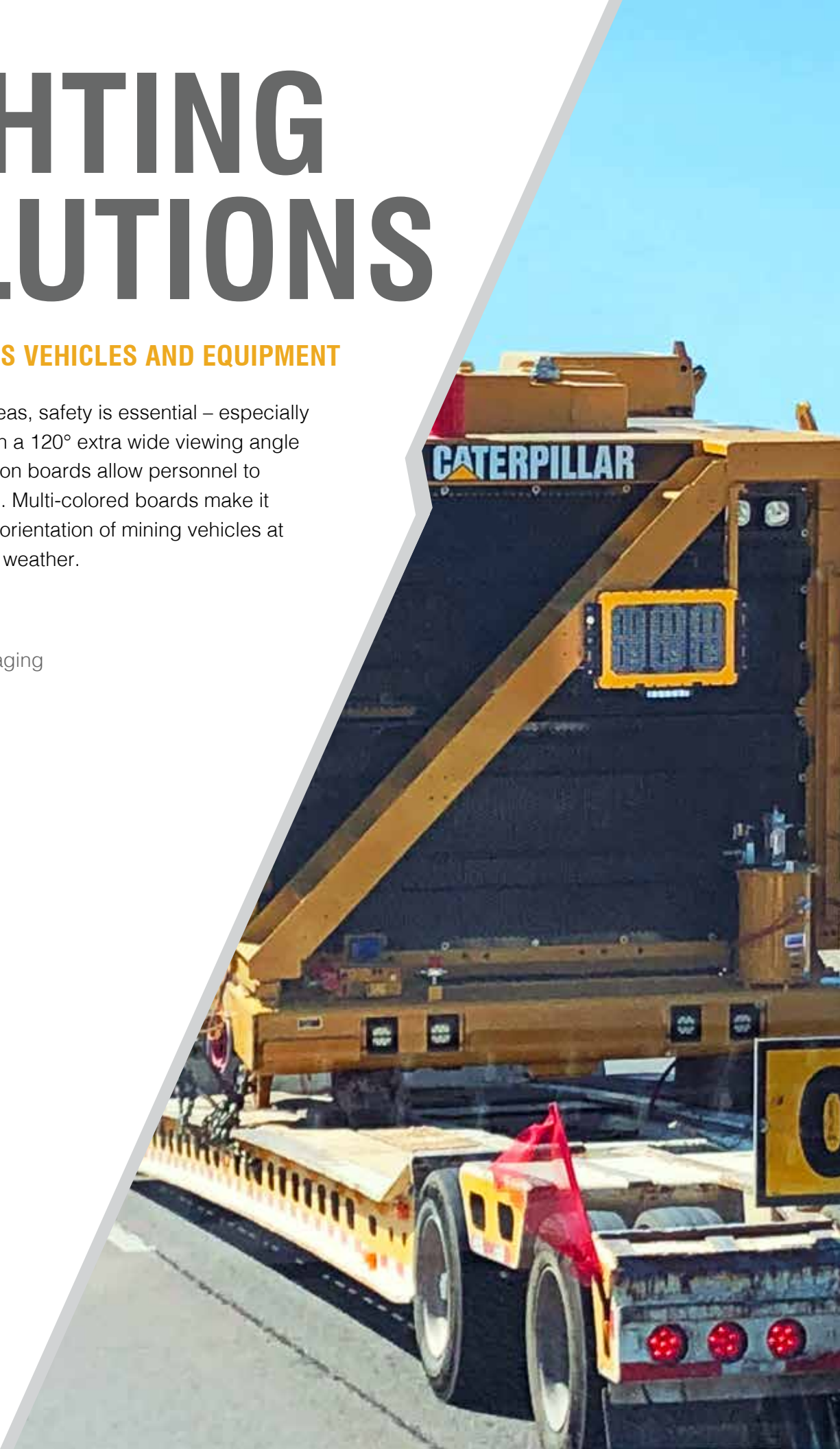
In high-traffic mining areas, safety is essential – especially in harsh conditions. With a 120° extra wide viewing angle Vision X LED identification boards allow personnel to quickly identify vehicles. Multi-colored boards make it easier to determine the orientation of mining vehicles at night or during extreme weather.

Applications

- Ground Engaging
- Tracked
- Rubber Tire



VXINDUSTRIAL.COM



COUNTLESS COMBINATIONS

Each digit consists of 195 high-output LEDs that are available in red, green, blue, or amber. The 3-digit board can produce 4,960 combinations, while the 2-digit board can produce 1,540 combinations.

MAGNETIC SENSOR

The magnetic sensor allows for up to 999 unique vehicle identification numbers from one material number.

AUTO DIMMABLE

The 2 digit and 3 digit boards automatically adjust brightness depending on day or night lessening eye strain.

CONTROLLER AREA NETWORK (CAN BUS) Available

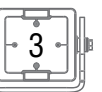
The number boards are available with CAN technology, delivering real-time communication between vehicle application devices and the number boards resulting in reduced wiring and real time weight and vehicle status display.

MESSAGE DISPLAY

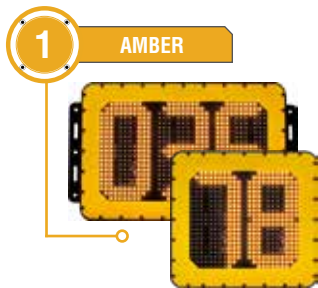
Secondary B-O (Bad Order) display message to indicate equipment needs service or is inoperative.



SLIM DESIGN



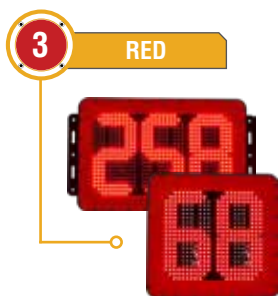
LED BOARD FIT-OUT GUIDE



Orientation : **Front**
Beam Pattern : 120°
Item # : MIL-ID02A, MIL-ID03A



Orientation: **Side**
Beam Pattern : 120°
Item #: MIL-ID02G, MIL-ID03G



Orientation : **Back**
Beam Pattern : 120°
Item # : MIL-ID02R, MIL-ID03R



Orientation : **Side**
Beam Pattern: 120°
Part # : MIL-ID02B, MIL-ID03B

2 DIGIT BOARD SPECIFICATIONS

MECHANICAL

Fixture Weight w/ Brackets:	21 lbs (9.53kg)
Shipping Weight:	24 lbs (10.89kg)
Mounting:	Modular Mounting Brackets
Hardware:	Included (with magnetic sensor)

TECHNICAL

LED:	5050 (0.2W)
Color:	Red, Green, Blue, Amber
Lumens:	-
Beam Pattern:	120° Extra Wide View
Wattage:	78W
Amp Draw:	6.5A @ 12V
Operating Voltage:	12-36V DC
Operating Temperature:	-40°C ~ 80°C
Lifespan:	50,000 hrs
Connector:	3 Pin Deutsch

CONSTRUCTION

Housing:	Die-Cast 6061 Aluminum
Housing Color:	Black
Lens:	Polycarbonate

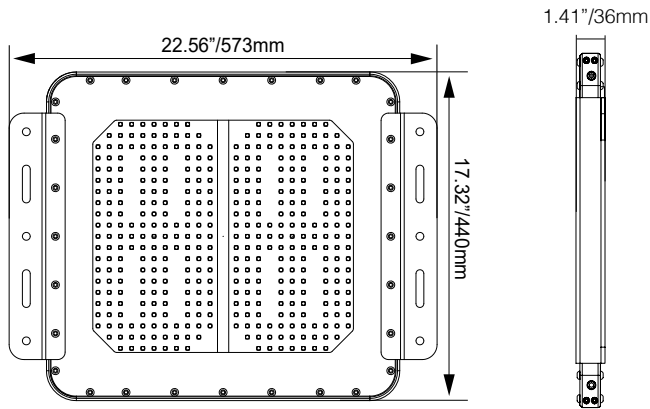
RATINGS

EMC Emission:	CISPR 25 Class 1
Ingress Protection:	IP-68/ IP69K
Vibration Rating:	21.2 Grms
Warranty:	3 Years



PART #:	# of DIGITS	COLOR
MIL-ID02R	2	Red
MIL-ID02G	2	Green
MIL-ID02B	2	Blue
MIL-ID02A	2	Amber

2D DRAWING



3 DIGIT BOARD SPECIFICATIONS

MECHANICAL

Fixture Weight w/ Brackets:	27 lbs (12.25kg)
Shipping Weight:	30 lbs (13.61kg)
Mounting:	Modular Mounting Brackets
Hardware:	Included (with magnetic sensor)

TECHNICAL

LED:	5050 (0.2W)
Color:	Red, Green, Blue, Amber
Lumens:	-
Beam Pattern:	120° Extra Wide View
Wattage:	117W
Amp Draw:	9.75A @ 12V
Operating Voltage:	12-36V DC
Operating Temperature:	-40°C ~ 80°C
Lifespan:	50,000 hrs
Connector:	3 Pin Deutsch

CONSTRUCTION

Housing:	Die-Cast 6061 Aluminum
Housing Color:	Black
Lens:	Polycarbonate

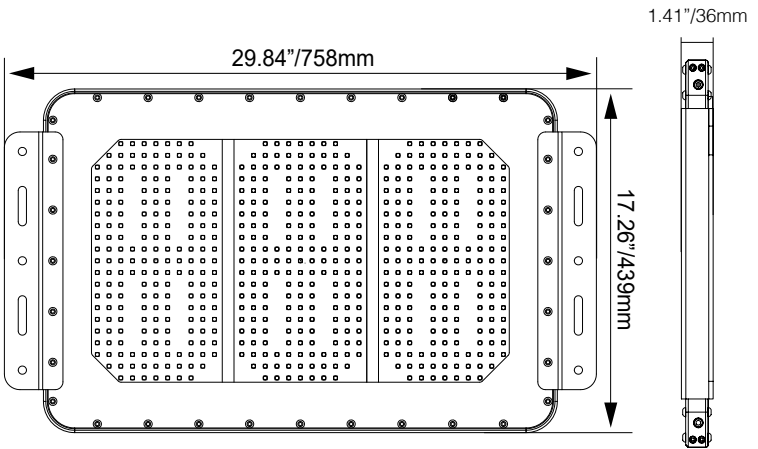
RATINGS

EMC Emission:	CISPR 25 Class 1
Ingress Protection:	IP-68/ IP69K
Vibration Rating:	21.2 Grms
Warranty:	3 Years



PART #:	# of DIGITS	COLOR
MIL-ID03R	3	Red
MIL-ID03G	3	Green
MIL-ID03B	3	Blue
MIL-ID03A	3	Amber

2D DRAWING





NOTES:

VISION X USA

1601 Boundary Blvd
Auburn WA 98001
United States of America
253-218-2900

VISION X ASIA

23-7 Dongtansandan
9-gil Dongtan-myeon Hwaseong-si
Gyeonggi-do 18487, Korea
P: 82-32-515-4814