

COMMERCIAL SOLUTIONS

VXINDUSTRIAL.COM



LED | LIGHTING CATALOG



LIGHTING SOLUTIONS

FOR COMMERCIAL VEHICLES AND EQUIPMENT

Vision X Lighting offers a large increase in energy efficiency over older technologies while also increasing the safety and productivity of the working environment by producing 80% more light than traditional fixtures.

HEAVY DUTY BRACKETS

Designed with extreme conditions in mind, each fixture is equipped with forward rake trunnion or single bolt bracket options for functional mounting and stability.

INCREASED PERFORMANCE

Vision X Lighting products achieve a long life span of 50,000+ hours.

ANTI-CORROSION

The marine grade polyester powder coating is designed for the exterior environment offering excellent long term light and weather resistance passing multiple chemical and durability tests.



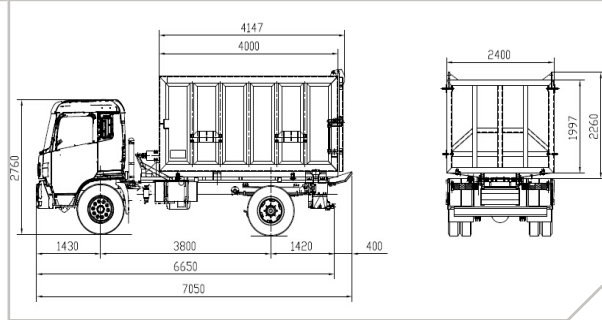
VXINDUSTRIAL.COM



SOLUTION PROCESS

2D BLUEPRINT

Vision X Lighting begins each project with a customer provided blueprint of the equipment to be retrofitted, then gathers the technical information for those vehicles or equipment.



3D MODEL

A 3D model is built to the customer's specifications for employment in various work environments when carried into the rendering software.



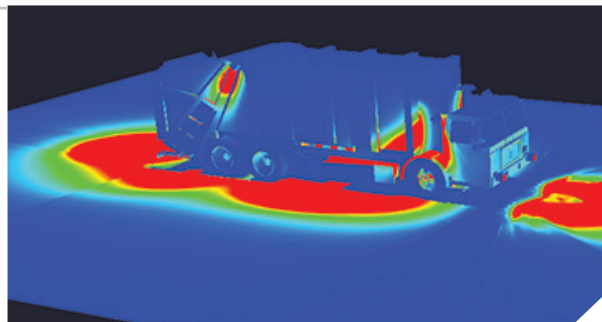
SIMULATION RENDER

Our engineers place and aim the lights in the simulation rendering to calculate actual performance. This ensures the final product will meet the customer's lighting requirements.



SOLUTION

Vision X Lighting creates a complete breakdown of the customer's specific needs to meet their safety and lighting requirements for an engineered solution.



LED INITIATIVE PROGRAM

SAFETY

- No effect on human eye or skin: IEC 62471 Photo biological tested
- Reduces operator fatigue: 6000k Color temperature
- Eliminates risk of shock: Low-voltage electronics
- Eliminates touch burns: Thermally-regulated housing
- Reduces near-miss incidents: Increased light output
- Contain no lead or mercury: ROHS Compliant electronics

PREVENTATIVE MAINTENANCE

- Exceeds half engine life: Long-life LED
- Completely resist vibration: Solid-state components
- Reduces wear on associated components: Low in-rush current at startup
- Lessens chance of full-fixture failure: Built-in redundancy
- Uninterrupted fixture function and overheat protection: Built-in thermal management

COST SAVINGS

- Reduces associated component wear
- Less expensive than OE and HID options
- Increased reliability and longevity for increased production
- Reduces or removes unscheduled maintenance of lighting
- Increased productivity due to less operator fatigue
- Streamline inventory counts to common solution

ENVIRONMENTAL

- ROHS-Compliant electronics
- Contains no lead or mercury
- Reduced CO₂ emissions
- No hazardous disposal required





We Genuinely Care About
Our Customer's Safety.

Ask About Our

**ON SITE
CONSULTING**

ENGINEERED LIGHTING SYSTEMS

Vision X Lighting fit outs are specifically designed for each particular piece of equipment, not just a generic light head. We engineer specific lighting models to reduce or eliminate unscheduled maintenance, reduce amperage draw to minimize wear on associated equipment, and increase light output on the work area while reducing glare to peripheral equipment.

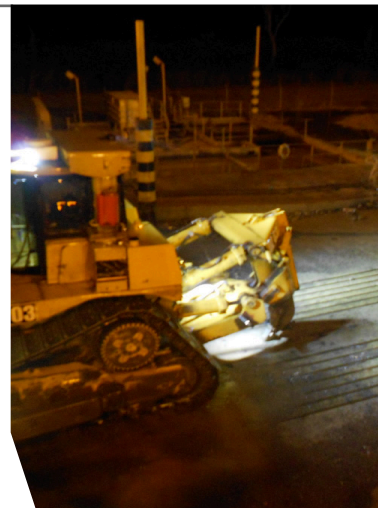
MUNICIPALITY

- Service Body •
- Utility Trucks •
- Waste Management •
- P.U.D. •



CONSTRUCTION

- Concrete •
- Pavers •
- Excavators •
- Dozers •
- Rollers •



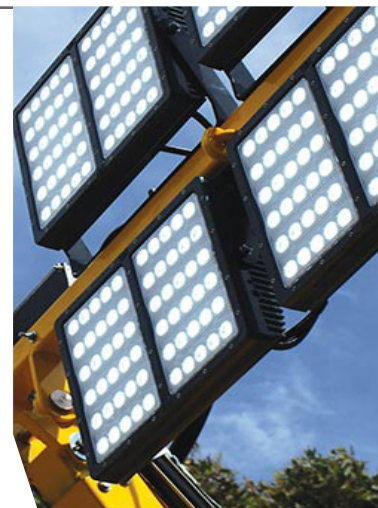
TRANSPORT

- Semi Trucks •
- Ships •
- Ferries •
- Buses •
- Railroad •



SUPPORT EQUIPMENT

- Light Plants •
- Forklifts •
- Cranes •
- Sweepers •
- Water Trucks •



SERVICE BODY SAMPLE FIT-OUT GUIDE



SERVICE BODY - ALL MODELS -



1 XIL-SP540

**4" SQUARE FLOOD LED
SOLSTICE PRIME-SERIES
WORK LIGHT**

2x Side-facing (one on each front corner
of utility rack)
2x Side-facing (one on each rear corner
of utility rack)



2 DURA-M460

**2" SQUARE FLOOD LED
DURA-SERIES WORK LIGHT**

2x Rear outer-corner of bumper

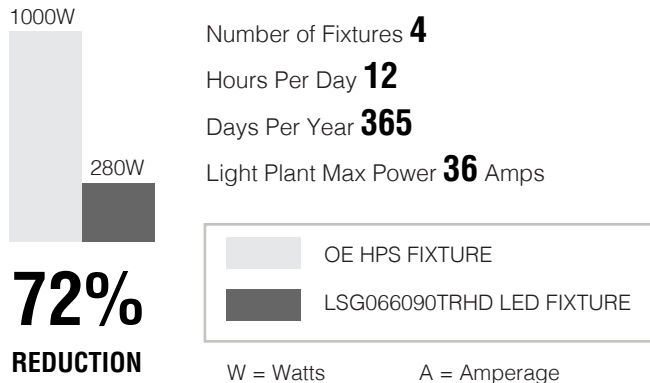
Vision X Lighting Mining Services
P: 1-800-994-4460 E: mining@visionxusa.com
Copyright 2017 Vision X Lighting

SAMPLE

LIGHT PLANT ROI

Opportunity

Fixtures on Light Plants have been adequate, at best. New LED technology has been designed specifically for these lighting apparatuses and addresses issues with current lighting systems.



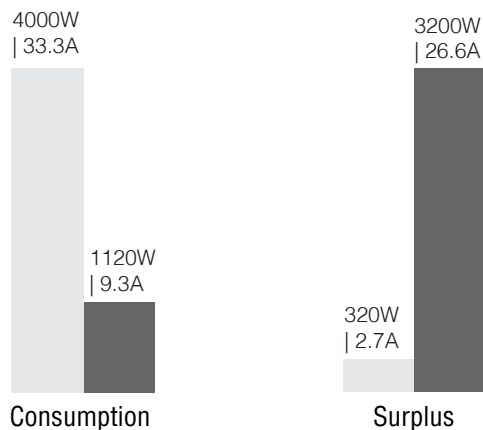
Scope of Work

- Direct, one-for-one replacement of OE fixture.
- Bypass of OE ballast system allowing 120V AC to flow directly to the light fixture.

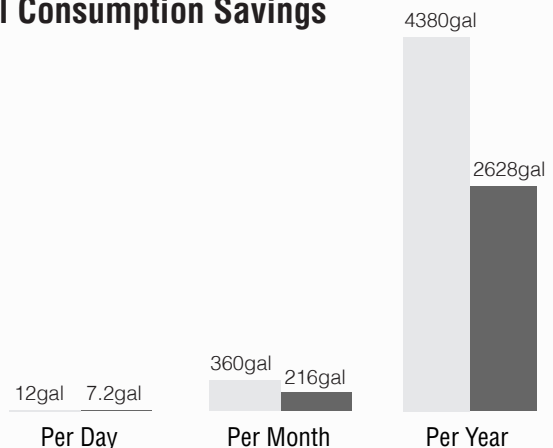
Data Input

Light Plant Voltage	120V AC
Full Load Fuel Consumption	1 GALLON PER HOUR
Half Load Fuel Consumption	0.6 GALLON PER HOUR
Fuel Cost	\$4.00 USD
Factory Fixture Cost	\$400.00 USD
LED Fixture Cost	\$1,199.00 USD

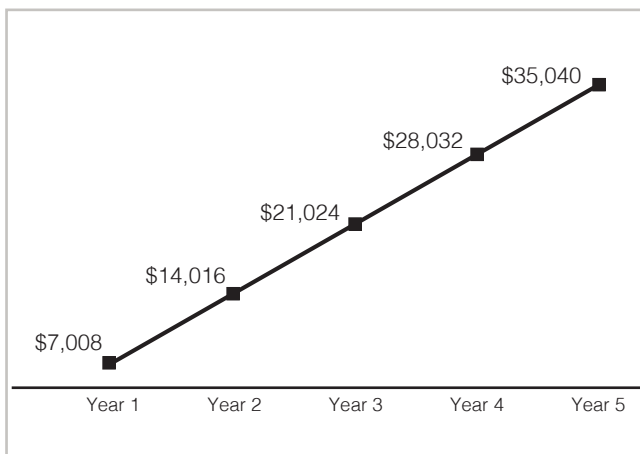
Energy Savings



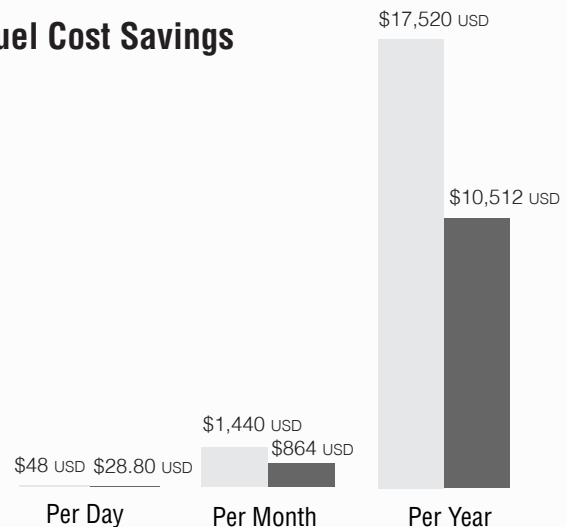
Fuel Consumption Savings



5 Year Fuel Cost Savings



Fuel Cost Savings



Objectives Achieved Through LED Upgrade









Factory Fixture Relamp	\$1,600 USD
LED Fixture Relamp	\$4,769 USD
Total Upgrade Cost	\$3,196 USD
ROI on Investment	0.46 YEARS
5 Year Savings	\$31,844 USD

- 70%** Reduction in power consumption over current OE lighting system.
- 80%** Decrease in light pollution (stray light loss into surrounding hills and into oncoming equipment).
- Built-in redundancy in each light fixture to completely remove unscheduled maintenance.
- Serviceable dual-power supply and circuit board during planned maintenance.
- ROHS-Compliant components contain no lead or mercury and require no hazardous disposal.

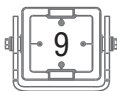
A Green Solution

Vision X Lighting technology ensures that your LED Upgrade will be a solid investment in a sustainable future. The 79,000 kWh saved per year prevents approximately 55 metric tons of greenhouse gas emissions being released into the atmosphere. In addition to our energy efficiency, all Vision X LED fixtures contain no Lead or Mercury, which eliminates the risk to the environment upon disposal and requires no special disposal procedures.

What does 55 metric tons of CO2 emissions look like? Well it equates to...

Greenhouse Gases From...	CO ₂ Emissions From...	Carbon Sequestered By...
 12 Passenger Vehicles	 6,186 Gallons of Gasoline	 45 Acres of U.S. Forests in 1 Year
 130,097 Miles Driven	 59,070 lbs. of Coal Burned	 1,411 Saplings Grown for 1 Year
 20 Tons of Waste in Landfills	 128 Barrels of Oil Consumed	

Energy data pulled from: www.epa.gov/cleanenergy/energy-resources/calculator.html



BT LIGHT DUTY SERIES

Direct Metal Halide/Halogen Replacement | Reverse Polarity Protection | Dual Mounting Brackets



BLB 5 LED

- 400 Watt Halogen Equivalent
- 4,000 Lumens
- 35-Watt
- 21.2 Grms Vibration Rating
- Amp Draw: 2.9A@12V
- 9-32V DC Input
- IP-68 / IP69K, CISPR 25
- Beam Patterns: 10°, 25°, 40°, 60°, 90°, 30°/65°

Application: Construction, Semi Truck, Service Body

ITEM#: BLB0705xx

4.86" x 4.41" x 3.98"

BLB 9 LED

- 700 Watt Halogen Equivalent
- 7,200 Lumens
- 63-Watt
- 21.2 Grms Vibration Rating
- Amp Draw: 5.3A@12V
- 9-32V DC Input
- IP-68 / IP69K, CISPR 25
- Beam Patterns: 10°, 25°, 40°, 60°, 90°, 30°/65°
- Amber LEDs and Lens

Application: Construction, Semi Truck, Service Body

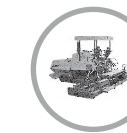
ITEM#: BLB0709xx

6.08" x 5.20" x 3.33"



Amber LEDs and Lens

ITEM#: BLB03093065AAL



BLB 12 LED

- 1000 Watt Halogen Equivalent
- 9,600 Lumens
- 84-Watt
- 21.2 Grms Vibration Rating
- Amp Draw: 7.0A@12V
- 9-32V DC Input
- IP-68 / IP69K, CISPR 25
- Beam Patterns: 10°, 25°, 40°, 60°, 90°, 30°/65°

Application: Construction, Semi Truck, Service Body

ITEM#: BLB0712xx

6.95" x 5.20" x 4.02"



BLB 20 LED

- 400/500 Watt Halide Equivalent
- 16,000 Lumens
- 140-Watt
- 21.2 Grms Vibration Rating
- Amp Draw: 11.7A@12V
- 9-32V DC Input
- IP-68 / IP69K, CISPR 25
- Beam Patterns: 10°, 25°, 40°, 60°, 90°, 30°/65°

Application: Construction, Semi Truck, Service Body

ITEM#: BLB0720xx

9.42" x 6.81" x 4.92"



DURALUX SERIES



DURALUX MINI

- 2,000 Lumens
- 12-Watt
- Amp Draw: 1.0A @12V
- 15.6 Grms Vibration Rating
- 11-65V DC Input
- IP-68 / IP69K, CISPR 25
- Beam Pattern: 60°

Application: Construction, Semi Truck, Service Body

ITEM#: DURA-M460

2.75" x 3.62" x 1.94"

Available with a single bolt mounted trunion for adjustable angle alignment.

ITEM#: BLB050460

12-Watt

Beam Pattern: 60°



ITEM#: BHB0504M

20-Watt

Mixed Beam Pattern

10° Beam Pattern



25° Beam Pattern



Flush Mounts Available

ITEM#: DURA-M460FLUSH

ITEM#: DURA-460FLUSH

ITEM#: DURA-660FLUSH

DURALUX 4 LED

- 2,112 Lumens
- 20-Watt
- Amp Draw: 1.6A @12V
- 15.6 Grms Vibration Rating
- 11-65V DC Input
- IP-68 / IP69K, CISPR 25
- Beam Patterns: 10°, 40°, 60°
- Amber LEDs Available

Application: Construction, Semi Truck, Service Body

ITEM#: DURA-4xxA

3.94" x 4.24" x 2.57"



DURALUX 6 LED

- 3,696 Lumens
- 30-Watt
- Amp Draw: 2.5A @12V
- 60 Grms Vibration Rating
- 11-65V DC Input
- IP-68 / IP69K, CISPR 25
- Beam Patterns: 10°, 40°, 60°

Application: Construction, Semi Truck, Service Body

ITEM#: DURA-6xx

5.38" x 4.19" x 2.72"



CANNON SERIES



4.5" LONG RANGE

- 1,363 Lumens
- Distance to 1 Lux: 1,115 ft.
- 40-Watt
- Amp Draw: 3.3A @12V
- 9-32V DC Input
- IP-68
- Beam Pattern: 10°

Application: Semi Truck

ITEM#: CG2-CPZ110

ITEM#: CG2-CPZ110KIT

4.79" x 5.28" x 3.69"

Covers Available:



4.5" MID RANGE

- 3,222 Lumens
- Distance to 1 Lux: 705 ft.
- 49-Watt
- Amp Draw: 4.1A @12V
- 9-32V DC Input
- IP-68
- Beam Pattern: 10°

Application: Semi Truck

ITEM#: CG2-CPZ710

ITEM#: CG2-CPZ710KIT



4.79" x 5.28" x 3.69"

Covers Available:





6.7" LONG RANGE

- 1,672 Lumens
- Distance to 1 Lux: 3,000 ft.
- 70-Watt
- Amp Draw: 5.83A @12V
- 9-32V DC Input
- IP-68
- Beam Pattern: 10°

Application: Semi Truck

ITEM#: CG2-CPZ610

ITEM#: CG2-CPZ610KIT

6.57" x 7.09" x 5.37"

Covers Available:



6.7" MID RANGE

- 8,210 Lumens
- Distance to 1 Lux: 1,105 ft.
- 126-Watt
- Amp Draw: 10.5A @12V
- 9-32V DC Input
- IP-68
- Beam Pattern: 10°

Application: Semi Truck

ITEM#: CG2-CPM1810

ITEM#: CG2-CPM1810KIT

6.57" x 7.09" x 5.37"



Covers Available:



SEALED BEAM SERIES



4 X 6 LED HEADLIGHT

- 4,210 Lumens
- Reflector Finish: Chrome, Black Chrome
- DOT Approved
- 9-32V DC Input
- IP-68
- Beam Modes: Halo, Low, High

Application: Semi Trucks

ITEM#: XIL-46D (Chrome)

ITEM#: XIL-46DKIT (Chrome)

ITEM#: XIL-46DB (Black Chrome)

ITEM#: XIL-46DBKIT (Black Chrome)

6.57" x 3.94" x 3.29"

7" LED HEADLIGHT

- 4,210 Lumens
- Reflector Finish: Chrome, Black Chrome
- DOT Approved
- 9-32V DC Input
- IP-68
- Beam Modes: Halo, Low, High

Application: Semi Trucks

ITEM#: XIL-7RD (Chrome)

ITEM#: XIL-7RDKIT (Chrome)

ITEM#: XIL-7RDB (Black Chrome)

ITEM#: XIL-7RDBKIT (Black Chrome)

6.96" x 6.96" x 3.86"



VIDEO EXTREME SERIES

VIDEO EXTREME SERIES

- 3,168 Lumens
- Wattage: 30W
- 15.6 Grms Vibration Rating
- Glare Blocking Shield
- Live Video Feed
- Amp Draw: 2.5A @12V
- 9-32V DC Input
- IP-68 / IP69K, CISPR 25
- Beam Patterns: 60°

Application: Service Body, Construction

ITEM#: VEL-4460CA72SS

(60° Light Only)

4.71" x 6.28" x 3.14"



ITEM#: VEL-4460CA72SS.IR850

(60° Infrared Light Only)

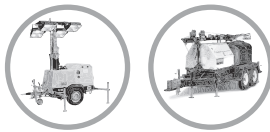
ITEM#: VEL-CAM-MON7KIT

(60° Light + Monitor)

ITEM#: VEL-M7

(Monitor)

LIGHT PLANT SERIES



AC PITMASTER 60 LED

- 1000 - Watt Metal Halide Replacement
- 36000 Lumens
- 280 Watt
- 90-305V AC | HV 249-528V AC
- Amp Draw: 2.55A @110V
- 60 Grms Vibration Rating
- IP-68 / IP69K
- Beam Patterns: 10°, 25°, 40°, 60°, 90°, 180°

Application: Light Plants

ITEM#: LSG0660xxTRHDXX

15.0" x 13.37" x 7.16"

VL PITMASTER

- 167 Lumens Per Watt
- 100W
- Amp Draw: 0.9A@110V AC | 8.3A @12V DC
- 21.2 Grms Vibration Rating
- 100V-240V AC Input | 10-32V DC Input
- IP-68 / IP69K
- Beam Patterns: 60°

Application: Light Plants

ITEM#: VSP025660

ITEM#: VSP025660G

ITEM#: VABPTR Black Trunnion Bracket

ITEM#: VAGPTR Grey Trunnion Bracket



13.10" x 7.09" x 1.71"



Mounting

Durable heavy-duty trunnion bracket made from carbon steel and powder coated for protection from the elements. This bracket provides a secure mount for the light head.



LED Upgrade

LED technology provides a reliable source for directing effective light to the area where the work is being performed. This fixture will provide a higher lumen per watt than existing HPS fixtures. Converting to LED can yield up to a 70% reduction in power consumption than traditional fixtures.



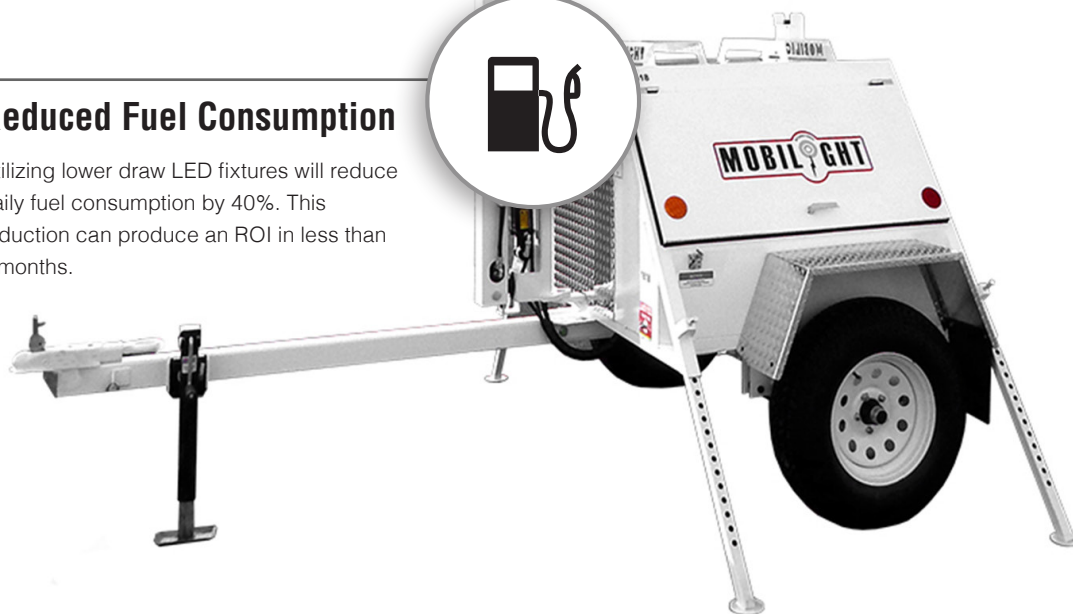
Easy Installation

The provided trunnion bracket mounts and power inverters to eliminate ballasts provide a one for one replacement of existing HPS and Halogen lights.



Reduced Fuel Consumption

Utilizing lower draw LED fixtures will reduce daily fuel consumption by 40%. This reduction can produce an ROI in less than 6 months.



STROBE SERIES



6.30" x 5.12" x 5.31"

HEAVY DUTY BEACON

- Full 360 Degree Visibility Dual Flash
- Wattage: 36W
- 15.6 Grms Vibration Rating
- Rugged Die-Cast Aluminum Housing
- Shatterproof Polycarbonate Lens
- 12-32V DC Input
- IP-68 / IP69K, CISPR 25
- Available Colors: Amber, Red, Blue, Green, White

Application: Road Work, Construction

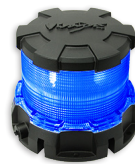
ITEM#: MIL-HDBR

ITEM#: MIL-HDBG

ITEM#: MIL-HDBB

ITEM#: MIL-HDBA

ITEM#: MIL-HDBW



36 STROBE BEACON

- Full 360° Visibility
- 7.2-Watt
- Amp Draw: 0.8A @12V
- 15.6 Grms Vibration Rating
- 12-32V DC Input
- IP-68 / IP69K, CISPR 25
- Colors Available: Red, Green, Blue, Amber, White

Application: Service Body

ITEM#: XIL-UB36x

2.79" x 5.19" x 3.81"



CONSTRUCTION SERIES

ROAD CONSTRUCTION LAMP KIT

- 21,696 Lumens
- 192-Watt
- Amp Draw: 1.74A @ 110V AC
- 15.6 Grms Vibration Rating
- 110-277V DC Input
- IP-68, IP69K, CISPR 25

Application: Road Work, Construction

ITEM#: PVR2CSWD96AC

11.81" x 4.65" x 1.89"



CATERPILLAR ROLLER HEADLIGHT



- 1,584 Lumens
- 15-Watt
- Amp Draw: 1.25A @12V
- 15.6 Grms Vibration Rating
- 12-32V DC Input
- IP-68

Application: Road Work, Construction

ITEM#: MIL-OECRHLP310

4.65" x 2.06" x 2.45"

ACCESSORIES

STRIP LIGHTING



7.5"

- 141 Lumens (7.5") | 328 Lumens (12")
- Standard and Touch Activation
- 2W (7.5") | 4.2W (12")
- Amp Draw: 0.16A @12V (7.5")
0.35A@12V (12")
- 9-32V DC Input
- IP-68

ITEM#: XIL-ST7.5

ITEM#: XIL-SL7.5

ITEM#: XIL-ST12

ITEM#: XIL-SL12

MINI INCIDENT RESPONSE CASE

- 2x DURA - 5,916 lm
- 4x XIL-S1160 - 1,720 lm
- 2x XIL-UMX - 6,902 lm
- Run Time: Up to 12 Hr
- Charge Time: 10 Hr

ITEM#: XLS-MSDURA460BP

ITEM#: XLS-M4S1160BP

ITEM#: XLS-M2UMX4460BP



3.4" UTILITY FLOOD LIGHT



3.52" x 1.91" x .91"

- 500 Lumens
- Wattage: 6W
- 8.6 Grms Vibration Rating
- Amp Draw: .5A @12V
- 12-32V DC Input
- IP69 / IP69K, CISPR 25
- Beam Patterns: 120°
- Colors Available: Red, Green, Blue, Amber, (White Standard)

ITEM#: XIL-UF32x

PRO POD LIGHTING

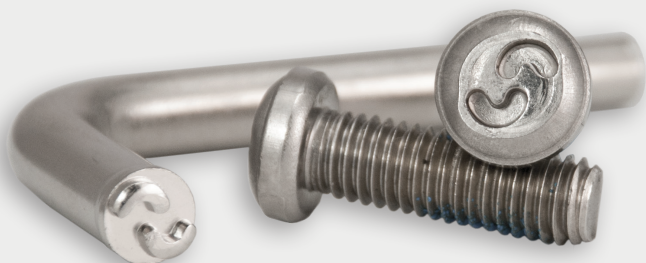
- 140 Lumens
- Cord Length 3ft.
- 2-Watt
- Amp Draw: 0.17A @12V
- 9-32V DC Input
- Colors Available: Red, Green, Blue, Amber, White

ITEM#: XIL-PDx



SECURITY BOLTS

- Fit Virtually Any Bolt
- 304 Stainless Steel Construction
- Sold as 2 Bolts with 1 Tool

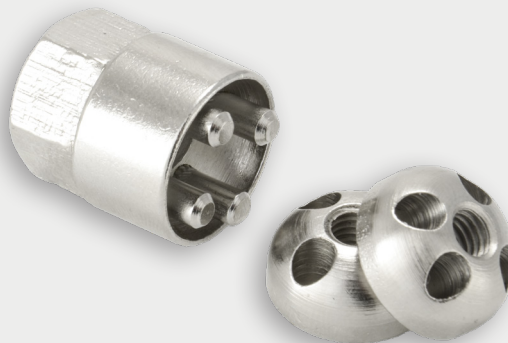


ITEM#: XIL-SB0615	M6 x 15
ITEM#: XIL-SB0620	M6 x 20
ITEM#: XIL-SB0815	M8 x 15
ITEM#: XIL-SB0820	M8 x 20
ITEM#: XIL-SB0825	M8 x 25

SECURITY NUTS

- Fit Virtually Any Bolt
- Plated Carbon Steel Construction
- Sold as 2 Bolts with 1 Tool

ITEM#: XIL-SN06	M6
ITEM#: XIL-SN08	M8
ITEM#: XIL-SN10	M10
ITEM#: XIL-SN12	M12





NOTES:

VISION X USA

1601 Boundary Blvd
Auburn WA 98001
United States of America
253-218-2900

VISION X ASIA

23-7 Dongtansandan
9-gil Dongtan-myeon Hwaseong-si
Gyeonggi-do 18487, Korea
P: 82-32-515-4814