

CATERPILLAR DRAGLINE LIGHTING

For Models: 8000 / 8200 / 8750

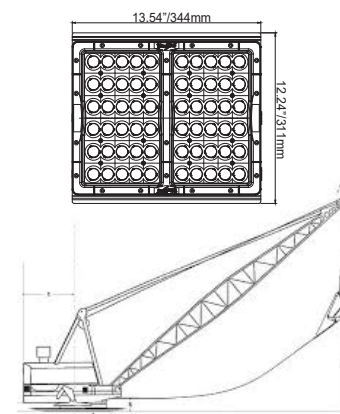


LED | LIGHTING CATALOG



ENGINEERED LIGHTING SOLUTIONS

Vision X lighting fixtures are not merely lighting systems, they are engineered lighting solutions. They provide increased efficiency, increased safety, decreased environmental impact, and decreased costs. Vision X LED lights offer a large increase in energy efficiency over older technologies while also increasing the safety and productivity of the working environment by outputting 80% more light than the fixtures used previously.



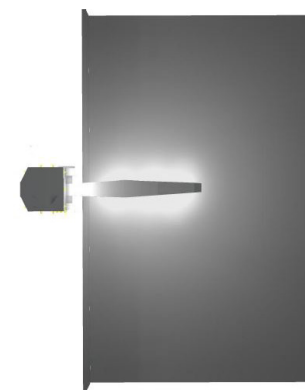
2D BLUEPRINT

Vision X Lighting begins each project with a customer provided list of machines to be retrofitted, then gathers the technical information for those machines.



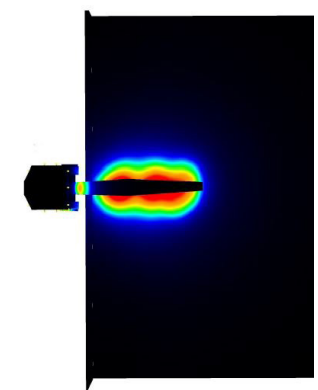
3D MODEL

A 3D model is built to the customer's specifications, then carried over into the rendering.



SIMULATION RENDER

A simulation rendering ensures the final product will meet the customer's lighting requirements.



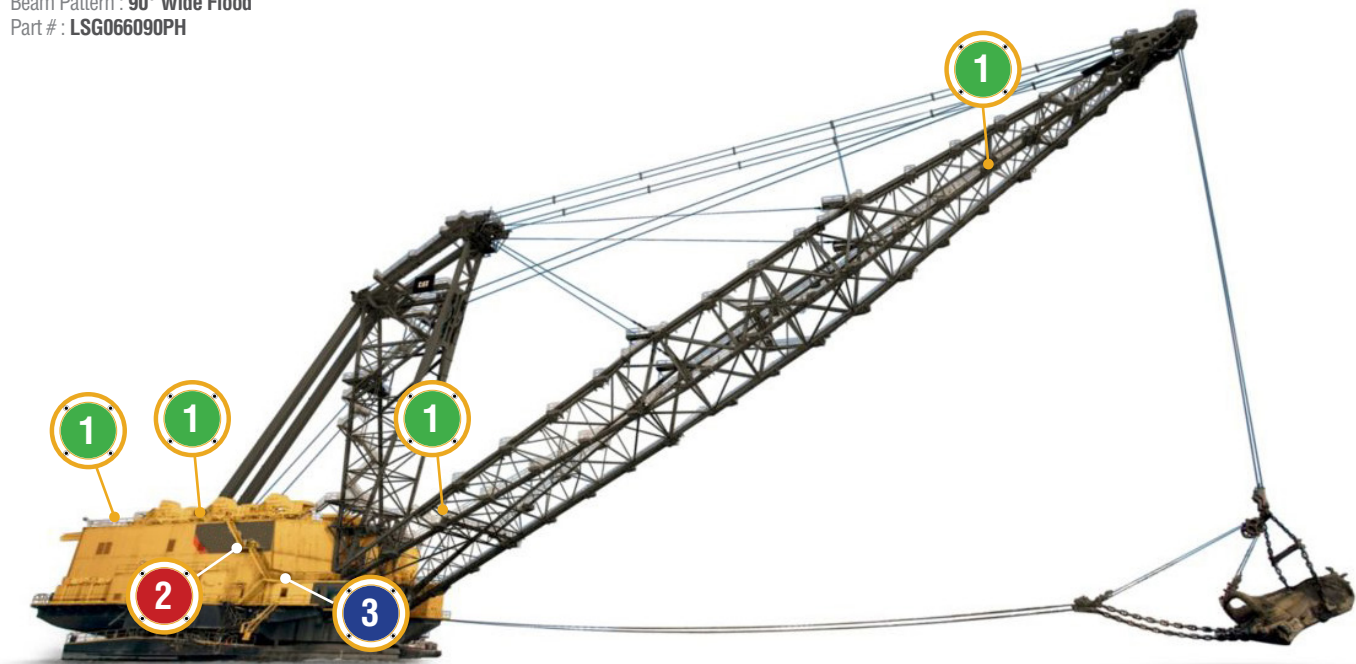
SOLUTION

Vision X Lighting creates a complete breakdown of the customer's specific needs to meet their safety requirements.



The image displays three views of a mechanical clock movement. The left view shows the front of the clock with a yellow casing and a white dial. The middle view shows the side of the clock, revealing the internal mechanism and the winding crown. The right view is a close-up of the dial, showing the hour markers and the hands.

Number of Fixtures : **Equipment Specific**
Location : **Boom, House**
Beam Pattern : **90° Wide Flood**
Part # : **LSG066090PH**



Number of Fixtures : **Equipment Specific**
Location : **Interior**
Beam Pattern : **180°**
Part # : **LSG0225180**

The image shows two different types of LED work lights. On the left is a flood light, which has a large, circular, white lens and a black housing. On the right is a spot light, which has a square, silver-colored housing with a clear lens and a black center. Both lights are shown from a top-down perspective.

Number of Fixtures : **Equipment Specific**
Location : **Over-Door**
Beam Pattern : **180°**
Part # : **LSGSM40180PH**

[illegible]



Project Name:
Date:
Type:

Application

Designed to directly bolt in, these OEM replacements will out perform the factory P&H lighting by over 80% on the effective work area. Simple quick connect wiring allows for one time wiring and no further electrical wiring to change the fixture. 3D analysis allows for site specific aiming with our patented ProTrac aiming system. Industry leading LED light output, size, weight and reliability for reduced unscheduled maintenance.

SPECIFICATIONS

Mechanical Information:

Fixture Weight:	37.05 lbs (16.81kg)
Shipping Weight:	40.05 lbs (18.17kg)
Mounting/ Entries: (See Accessories)	(1) 3/4" NPT - TOP (2) 3/4" NPT 90° - SIDES (2) 3/4" NPT 45°- SIDES

Electric Specifications:

Operating Voltage:	90 - 305V AC 127 - 431V DC
Wattage:	280W
Operating Temp:	-40°C ~ 60°C
THD:	<20% (@load≥50% / 115VAC,230VAC) (@load≥75% / 277VAC)
Power Factor:	≥ 0.98/115VAC ≥ 0.95/230VAC ≥ 0.92/277VAC
Short Circuit:	Constant Current Limiting, Recovers Automatically After Fault Condition is Removed
Frequency:	47-63Hz
Vibration:	15.6Grms

Construction:

Housing:	Die-Cast 6061 Aluminum
Finish:	Gloss Grey
Lens:	Polycarbonate Lens

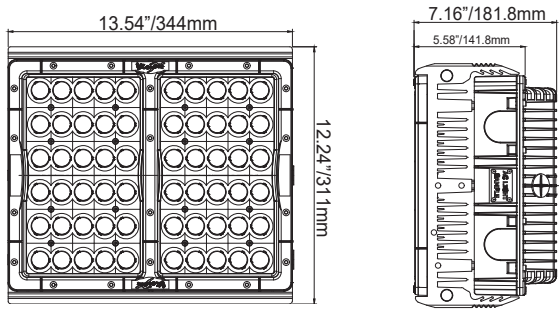
LED

LED:	XP-LHD(CREE)
Amp Draw:	2.43A @ 115VAC 1.22A @ 230VAC 1.01A @ 277VAC
Lifespan:	50,000 hr



PART #:		BEAM PATTERN
1	LSG066090PH	Flood 90°

2D DRAWING:



RATINGS:

EMC Emission:	Compliance to EN55015, EN55022 (CISPR22) Class B, EN61000-3-2 Class C (@Load $\geq 50\%$); EN61000-3-3
EMC Immunity:	Compliance to EN61000-4-2,3,4,5,6,8,11, EN61547, EN55024, Light Industry Level (surge immunity Line-Earth 4KV, Line-Line 2KV)
Ingress Protection:	IP-68, IP69k





Project Name:
Date:
Type:



Project Name:
Date:
Type:

Interior house and walkway lighting direct OEM replacement. Simple quick connect wiring allows for one time wiring and no further electrical wiring to change the fixture. Provides 200+ degree lighting other LED fixtures cannot produce. Industry leading LED light output, size, weight and reliability for reduced unscheduled maintenance.

SPECIFICATIONS

Fixture Weight:	8 lbs (3.8kg)
Shipping Weight:	10 lbs (4.5kg)
Mounting/ Entries: (See Accessories)	(6) 3/4" NPT - SIDES

Operating Voltage:	90 - 305VAC 127 - 431VDC
Wattage:	50W
Operating Temp:	-40°C - 60°C
THD:	<20% (@load≥50% / 115VAC, 230VAC) (@load≥75% / 277VAC)
Power Factor:	≥ 0.98/115VAC ≥ 0.95/230VAC ≥ 0.92/277VAC
Short Circuit:	Constant Current Limiting, Recovers Automatically After Fault Condition is Removed
Frequency:	47-63Hz
Vibration:	15.6Grms

Housing:	Die-Cast 6061 Aluminum
Finish:	Gloss Grey
Lens:	Polycarbonate Lens

LED:	MHB-B(CREE)
Amp Draw:	0.43A @ 115VAC 0.22A @ 230VAC 0.18A @ 277VAC
Lifespan:	50,000 hr



PART #:	BEAM PATTERN
2 LSG0225180	180°

[illegible]

EMC Emission:	Compliance to EN55022,EN61000-3-2 Class A ,EN61000-3-3
EMC Immunity:	Compliance to EN55024, EN61000-4-2,3,4,5,6,8,11; light industry level(surge 2KV), criteria A
Ingress Protection:	IP-68, IP69k





EQUIPMENT & OVER-DOOR LIGHTING

Product Information

Project Name:
Date:
Type:

Application

Direct bolt on over door and access panel lighting. Provides 200+ degree lighting other LED fixtures cannot match. Reduce unscheduled maintenance with robust mounts and guaranteed light operation. Optional colored covers for indicator lighting available in Red, Amber, Blue and Green. Industry leading LED light output, size, weight and reliability for reduced unscheduled maintenance.

SPECIFICATIONS

Mechanical Information:

Fixture Weight:	2 lbs (0.9kg)
Shipping Weight:	4 lbs (1.8kg)
Mounting/ Entries: (See Accessories)	(4) 3/4" NPT - SIDES

Electric Specifications:

Operating Voltage:	90 - 264VAC 127 - 370VDC
Wattage:	10W
Operating Temp:	-40°C ~ 60°C
THD:	<20% (@load≥50% / 115VAC,230VAC) (@load≥75% / 277VAC)
Power Factor:	≥ 0.98/115VAC ≥ 0.95/230VAC ≥ 0.92/277VAC
Short Circuit:	Constant Current Limiting, Recovers Automatically After Fault Condition is Removed
Frequency:	47-63Hz
Vibration:	15.6Grms

Construction:

Housing:	Die-Cast 6061 Aluminum
Finish:	Gloss Grey
Lens:	Polycarbonate Lens

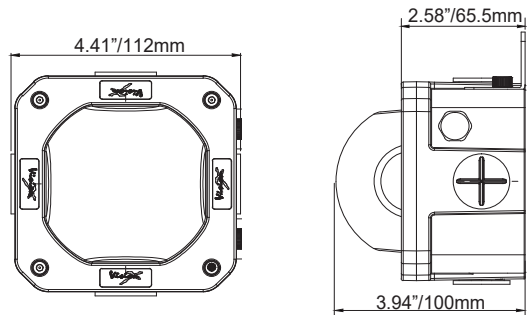
LED Light Engine/ Driver

LED:	5630(LG)
Amp Draw:	0.09A @ 115VAC 0.04A @ 230VAC 0.04A @ 277VAC
Lifespan:	50,000 hr



PART #:	BEAM PATTERN
3 LSGSM40180PH	180°

2D DRAWING:



RATINGS:

EMC Emission:	Compliance to EN55022,EN61000-3-2 Class A ,EN61000-3-3
EMC Immunity:	Compliance to EN55024, EN61000-4-2,3,4,5,6,8,11; light industry level(surge 2KV), criteria A
Ingress Protection:	IP-68, IP69k

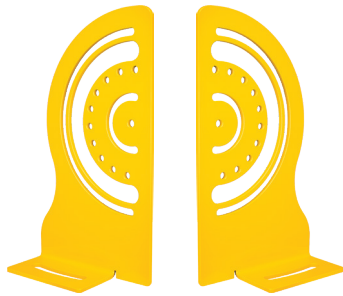


ACCESSORY LIGHTING

Replacement Parts

Project Name:
Date:
Type:

BRACKETS



P&H SHOVEL LIGHT
HEAVY DUTY TRUNNION
Part # : LAG60TRHD

HARDWARE



P&H SHOVEL LIGHT
PIN FEMALE QUICK CONNECT 2M
Part # : LAYUPC2M



JUNCTION BOX LIGHT
PIN MALE 3/4" QUICK CONNECT
Part # : LASUQC34

NOTES:



VISION X USA
1601 Boundary Blvd
Auburn WA 98001
United States of America
P: 253-218-2900
www.vxindustrial.com



VISION X ASIA
23-7 Dongtansandan
9-gil Dongtan-myeon Hwaseong-si
Gyeonggi-do 18487, Korea
P: 82-32-515-4814
www.visionxasia.com