

FUEL CANOPY LIGHTING

Outdoor Structural Applications



LED | LIGHTING CATALOG

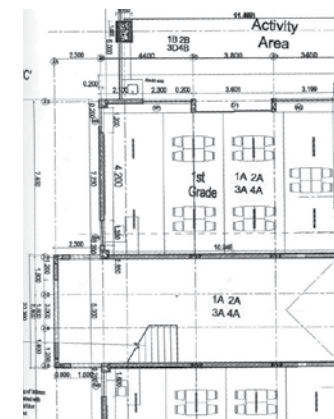


ENGINEERED LIGHTING SOLUTIONS

Vision X lighting fixtures are not merely lighting systems, they are engineered lighting solutions. They provide increased efficiency, increased safety, decreased environmental impact, and decreased costs. Vision X LED lights offer a large increase in energy efficiency over older technologies while also increasing the safety and productivity of the working environment by outputting 80% more light than the fixtures used previously.

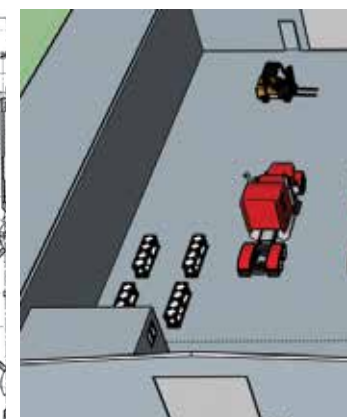


SOLUTION PROCESS



2D BLUEPRINT

Vision X Lighting begins each project with a customer provided list of machines to be retrofitted, then gathers the technical information for those machines.



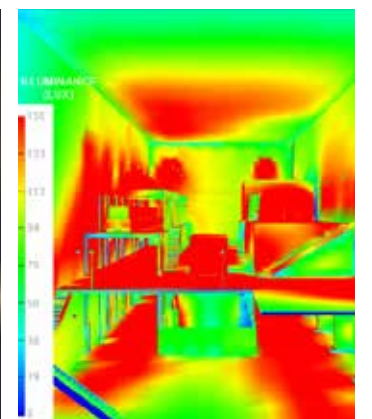
3D MODEL

A 3D model is built to the customer's specifications, then carried over into the rendering.



SIMULATION RENDER

A simulation rendering ensures the final product will meet the customer's lighting requirements.



SOLUTION

Vision X Lighting creates a complete breakdown of the customer's specific needs to meet their safety requirements.



The logo for Vision Global Lighting Systems is a circular emblem. At the top, it says "LIGHTING EVOLVED". In the center, the word "Vision" is written in a large, stylized script font, with "Global Lighting Systems" in a smaller, sans-serif font below it. At the bottom, it says "SINCE 1987" and "VISIONXUSA.COM".

JUNCTION BOX

Application

SPECIFICATIONS FUEL CANOPY KIT

Mechanical Information:

Fixture Weight:	8 lbs (3.8kg)
Shipping Weight:	10 lbs (4.5kg)
Mounting/ Entries: (See Accessories)	(6) 3/4" NPT - SIDES

Electric Specifications:

Operating Voltage:	90 - 305VAC 127 - 431VDC
Lumens:	6000-7000 lm
Wattage:	50W
Operating Temp:	-40°C - 60°C
THD:	<20% (@load≥50% / 115VAC,230VAC) (@load≥75% / 277VAC)
Power Factor:	≥ 0.98/115VAC ≥ 0.95/230VAC ≥ 0.92/277VAC
Short Circuit:	Constant Current Limiting, Recovers Automatically After Fault Condition is Removed
Frequency:	47-63Hz
Vibration:	15.6Grms

Construction:

Housing:	Die-Cast 6061 Aluminum
Finish:	Gloss Grey
Lens:	Polycarbonate Lens

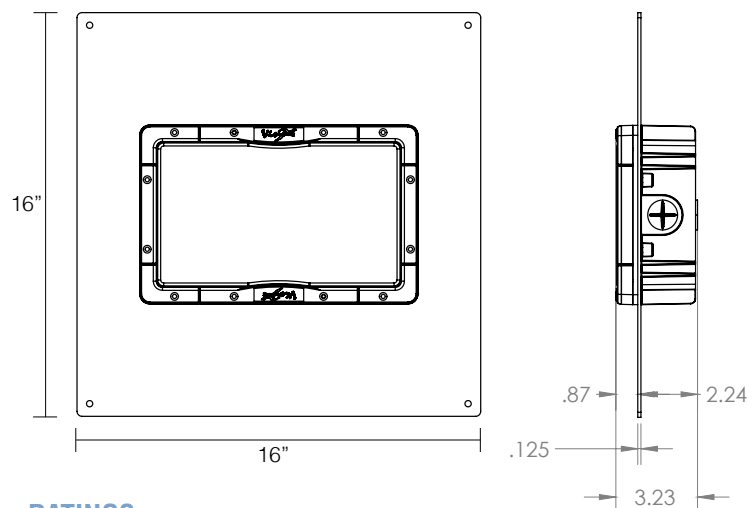
LED Light Engine / Driver

LED:	MHB-B(CREE)
Amp Draw:	0.43A @ 115VAC 0.22A @ 230VAC 0.18A @ 277VAC
Lifespan:	50,000 hr




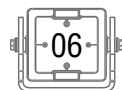
PART #:	BEAM PATTERN		
1 LSG0225180FC	180° Ultra-Wide Flood		

2D DRAWING:



RATINGS:

EMC Emission:	Compliance to EN55022,EN61000-3-2 Class A ,EN61000-3-3
EMC Immunity:	Compliance to EN55024, EN61000-4-2,3,4,5,6,8,11; light industry level(surge 2KV), criteria A
UL 1598A Marine:	
Ingress Protection:	IP-68, IP69k





VISION X USA

1601 Boundary Blvd
Auburn WA 98001
United States of America
P: 253-218-2900
www.vxstructural.com



VISION X ASIA

23-7 Dongtansandan
9-gil Dongtan-myeon Hwaseong-si
Gyeonggi-do 18487, Korea
P: 82-32-515-4814
www.visionxlighting.com