



KILL ZONE LIGHTING

For Models : All Large Mining Class Shovels



LED | LIGHTING CATALOG



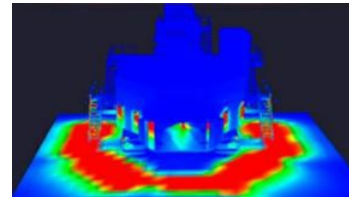
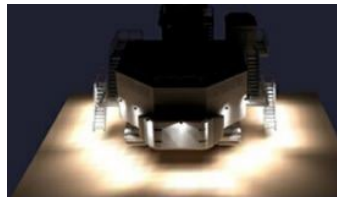
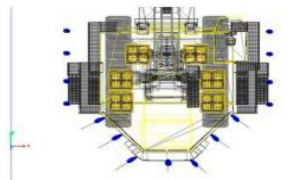
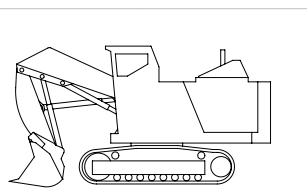
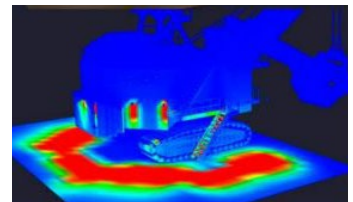
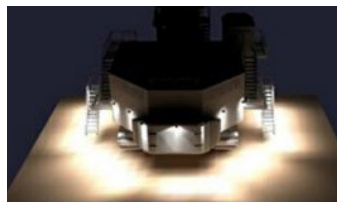
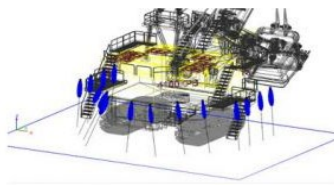
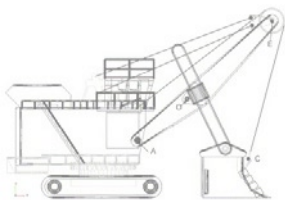
ENGINEERED LIGHTING SOLUTIONS

Vision X lighting fixtures are not merely lighting systems, they are engineered lighting solutions. They provide increased efficiency, increased safety, decreased environmental impact, and decreased costs. Vision X LED lights offer a large increase in energy efficiency over older technologies while also increasing the safety and productivity of the working environment by outputting 80% more light than the fixtures used previously.





SOLUTION PROCESS



2D BLUEPRINT

Vision X Lighting begins each project with a customer provided list of machines to be retrofitted, then gathers the technical information for those machines.

3D MODEL

A 3D model is built to the customer's specifications, then carried over into the rendering.

SIMULATION RENDER

A simulation rendering ensures the final product will meet the customer's lighting requirements.

SOLUTION

Vision X Lighting creates a complete breakdown of the customer's specific needs to meet their safety requirements.



KILL ZONE SHOVEL FITOUT GUIDE



1

XIL-UM40E3065R



SAFETY WORK AREA KILL ZONE LIGHTING

- 4x Side Mounted on Hydraulic Staircases
- 4x Side Mounted on Walkway Forward of Hydraulic Staircases
- 7x Evenly Spaced Across the Top of Rear Counter Weight

POWER SUPPLY



P-JBOXPSE

+



XPC-PS185-48A

Three inverters are required to run all 15 lights.
Inverters will require a 90-305v AC Input and will output 43-53v DC to run Kill Zone Lights.
2 side inverters will run 4 lights each, 1 Rear inverter will run 7 lights.

- 1x Inverter to be Mounted Center/Top of Rear Counter Weight
- 2x Inverters to be Mounted Top of Hydraulic Staircases on Each Side of Shovel

Welding of tabs or channel struct installation may be required at each light location.



1

XIL-UM40E3065R



SAFETY WORK AREA KILL ZONE LIGHTING

- 2x Side Mounted on Hydraulic Staircases
- 2x Side Mounted on Walkway Forward of Hydraulic Staircases
- 3x Evenly Spaced Across the Top of Rear Counter Weight

POWER SUPPLY



P-JBOXPSE

+



XPC-PS185-36A

Three inverters are required to run all 15 lights.
Inverters will require a 90-305v AC Input and will output 36v DC to run Kill Zone Lights.
2 side inverters will run 2 lights each, 1 Rear inverter will run 3 lights.

- 1x Inverter to be Mounted Center/Top of Rear Counter Weight
- 2x Inverters to be Mounted Top of Hydraulic Staircases on Each Side of Shovel

Welding of tabs or channel struct installation may be required at each light location.



KILL ZONE LIGHTING

Product Information

SPECIFICATIONS

MECHANICAL:

Fixture Weight:	2.65 lbs (1.2kg)
Shipping Weight:	4.03 lbs (1.83kg)
Mounting:	Single Bolt M10

ELECTRICAL:

Operating Voltage:	11-65VDC
Wattage:	21W
Operating Temp:	-40°C ~ 80°C
Vibration:	15.6Grms
Connector:	2 Pin Deutsch

CONSTRUCTION:

Housing:	Die-Cast 6061 Aluminum
Finish:	Gloss Black
Lens:	Polycarbonate Lens

LED

LED:	3W (XPG-CREE, RED)
Raw Lumens:	3,451 lm
Amp Draw:	2.97A @ 11.8V
Lifespan:	50,000 hr

RATINGS:

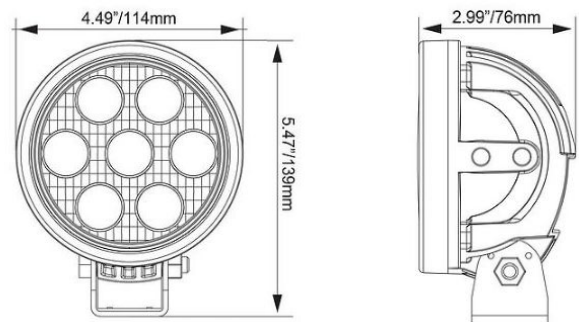
EMC Emission:	(CISPR 25) Edition 3.0 (2008-03) Class 3
Ingress Protection:	IP-68, IP69k
Warranty:	3 Years



PART #:	BEAM PATTERN	HOUSING
---------	--------------	---------

XIL-UM40E3065R	Elliptical 30/60° RED	Round
XIL-UM44E3065R	Elliptical 30/60° RED	Square

2D DRAWING:







KILL ZONE LIGHTING

Product Information

SPECIFICATIONS

MECHANICAL:

Fixture Weight:	8 lbs
Mounting:	Provided Feet

ELECTRICAL:

Operating Voltage:	12 VDC
Wattage:	60W
Operating Temp:	-40° - 80° C
Vibration:	21 Grms
Connector:	Turck

CONSTRUCTION:

Housing:	6061 Aluminum
Finish:	Matte
Lens:	Polycarbonate
Bracket Material:	Powder-Coated Steel

LED

LED:	XPG3
Raw Lumens:	5000 lm
Effective Lumens:	4000 lm
Amp Draw:	5A @12v DC
Lifespan:	50,000 hr

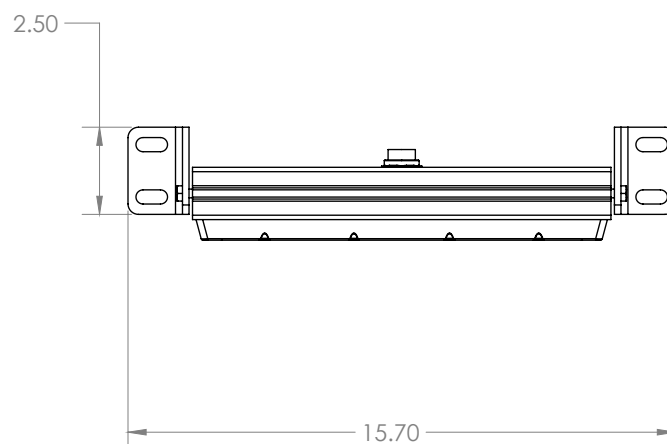
RATINGS:

EMC Emission:	Compliance to EN550515, EN55032 (CISPR32) Class B, EN61000-3-2 Class C (@ load $\geq 50\%$) ; EN61000-3-3, GB17743 and GB17625.1, EAC TP TC 020
Ingress Protection:	IP-68/69K
Warranty:	3 Year Commercial Warranty



PART #:	BEAM PATTERN	HOUSING
MV-1R	Flood Beam	Rectangle

2D DRAWING:







KILL ZONE POWER SUPPLY

Product Information

Application

For heavy mining equipment running on AC power, this power supply configuration converts AC power to 48v DC to effectively power the UM series lights. A minimum of one power supply is needed for every six UM lights.

SPECIFICATIONS

Technical Information:

Input Voltage:	90-305V AC
Output Voltage:	43-53V DC
Output Amperage:	3.8A @48v DC

Electric Specifications:

Operating Temp:	-40°C ~ 80°C
Vibration:	10~ 500Hz

RATINGS:

EMC Emission:	Compliance to EN551015, EN55022 (CISPR22) Class B, EN61000-3-2 Class C, EN6100-3-3
Ingress Protection:	IP-67, IP65

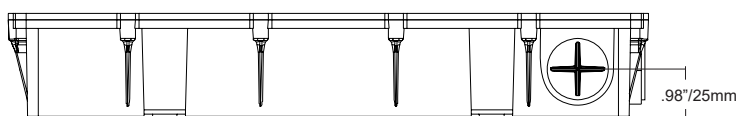
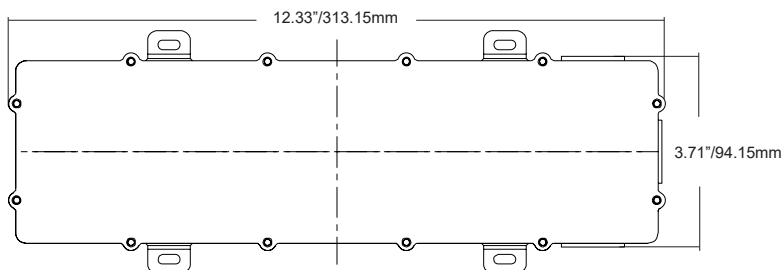


ITEM #:

PART#

XPC-PS185-48A

9903309



ITEM #:

PART#

P-JBOXPSE

9132617







VISION X USA

1601 Boundary Blvd
Auburn WA 98001
United States of America
P: 253-218-2900
www.vxindustrial.com



VISION X ASIA

23-7 Dongtansandan
9-gil Dongtan-myeon Hwaseong-si
Gyeonggi-do 18487, Korea
P: 82-32-515-4814
www.visionxlighting.com