



# LIGHT TOWER LIGHTING

For Models : All Light Plant Models



**LED** | LIGHTING CATALOG

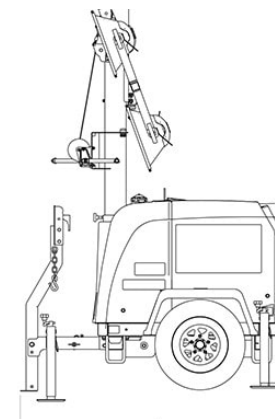


# ENGINEERED LIGHTING SOLUTIONS

**Vision X lighting** fixtures are not merely lighting systems, they are engineered lighting solutions. They provide increased efficiency, increased safety, decreased environmental impact, and decreased costs. Vision X LED lights offer a large increase in energy efficiency over older technologies while also increasing the safety and productivity of the working environment by outputting 80% more light than the fixtures used previously.

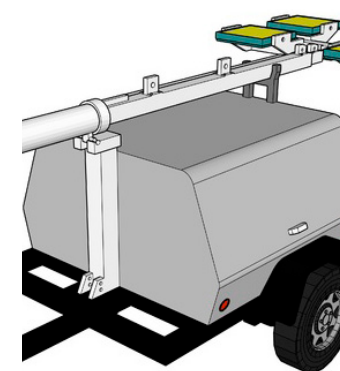


## SOLUTION PROCESS



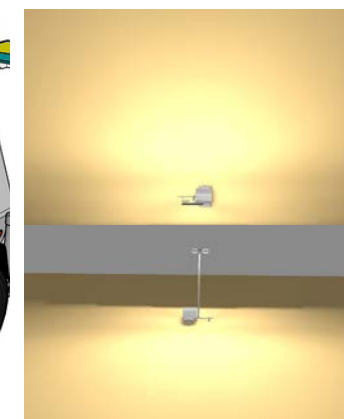
### 2D BLUEPRINT

Vision X Lighting begins each project with a customer provided list of machines to be retrofitted, then gathers the technical information for those machines.



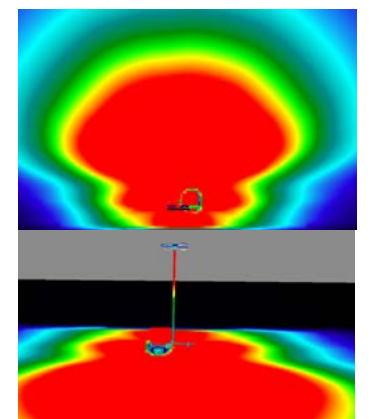
### 3D MODEL

A 3D model is built to the customer's specifications, then carried over into the rendering.



### SIMULATION RENDER

A simulation rendering ensures the final product will meet the customer's lighting requirements.



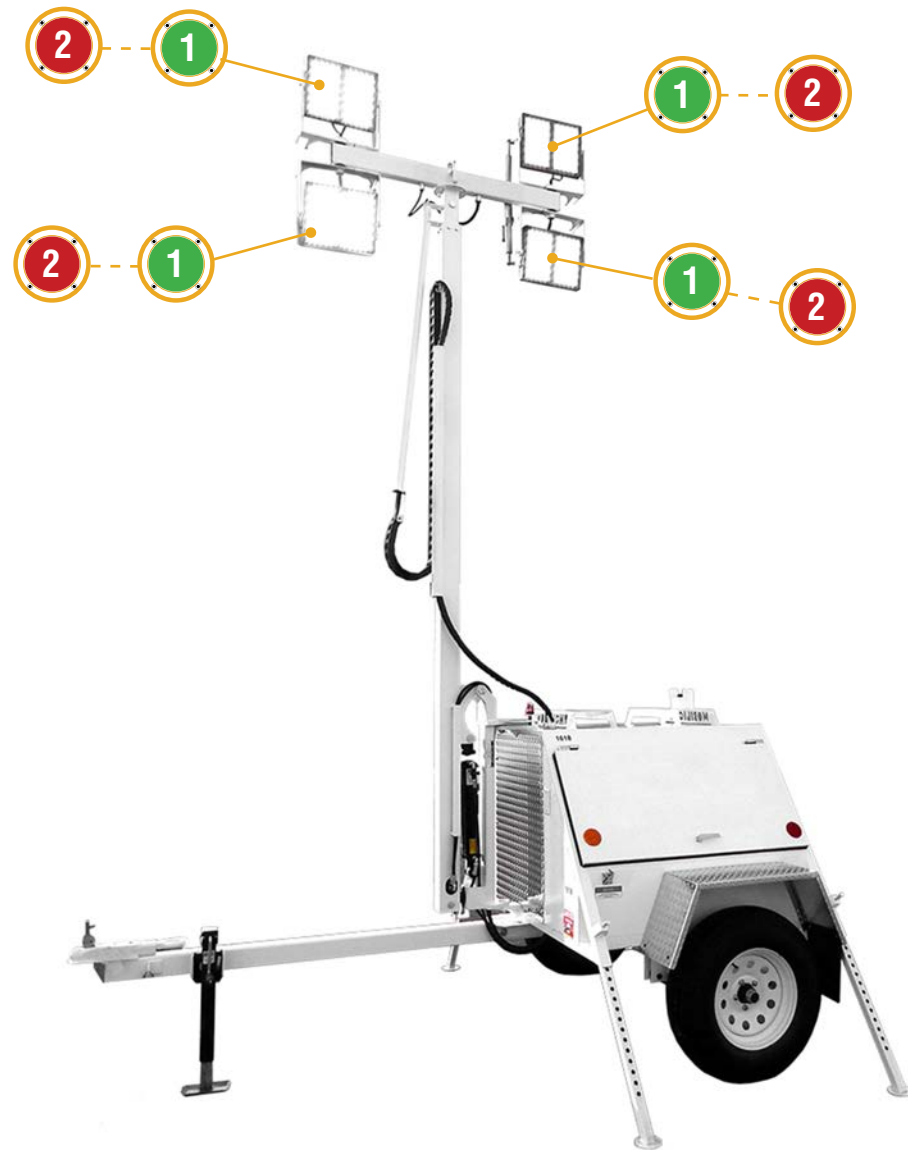
### SOLUTION

Vision X Lighting creates a complete breakdown of the customer's specific needs to meet their lighting and safety requirements.





# LIGHT TOWER FITOUT GUIDE



**1 PITMASTER 30**

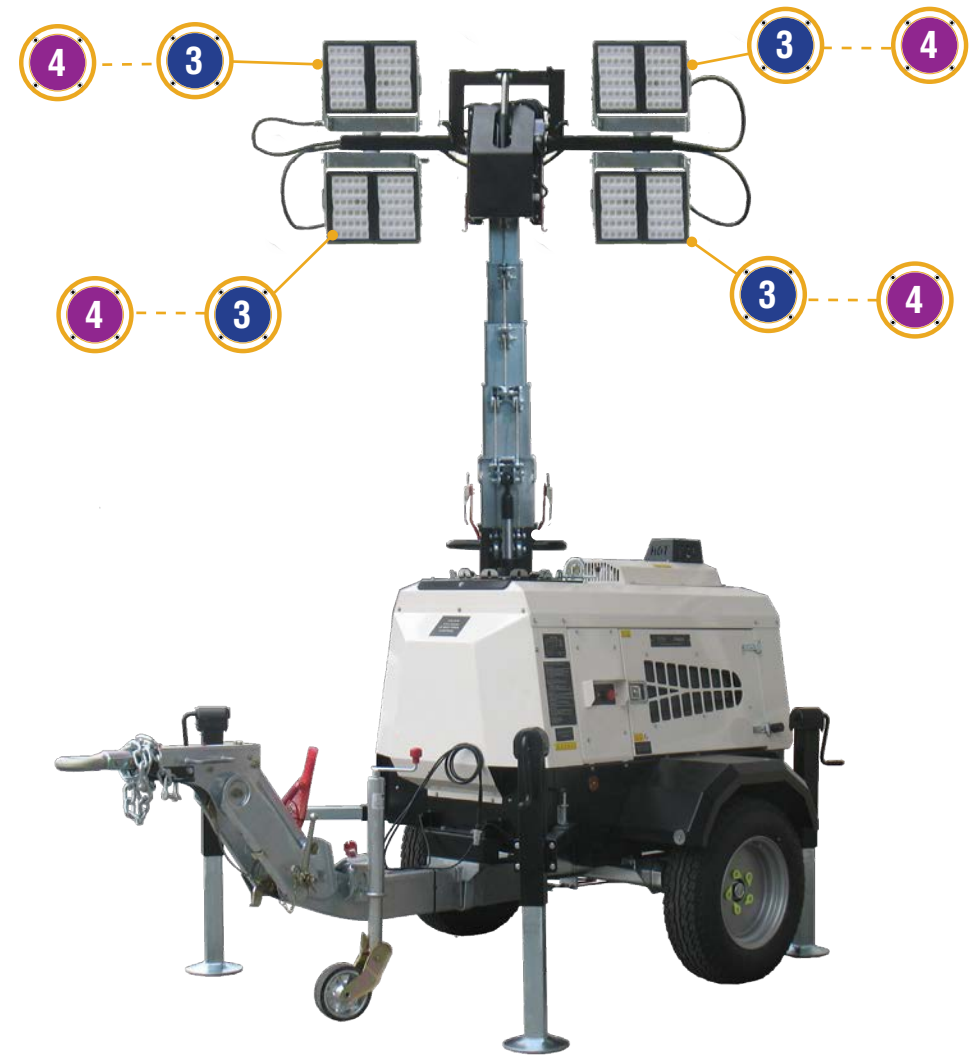


TRAMMING LIGHTING  
**DC PITMASTER-SERIES**  
Number of Fixtures :  
Location :  
Beam Pattern : **10/25/40/60/90° Elliptical**  
Part # : **MIL-PMX30XX**

**2 PITMASTER 60**



WORK AREA LIGHTING  
**DC PITMASTER-SERIES**  
Number of Fixtures :  
Location :  
Beam Pattern : **60° Flood**  
Part # : **MIL-PMX6060**



**3 PITMASTER 140W**



WORK AREA LIGHTING  
**AC PITMASTER-SERIES**  
Number of Fixtures :  
Location :  
Beam Pattern : **60°**  
Part # : **LSG063060TRHD**

**4 PITMASTER 280W**



WORK AREA LIGHTING  
**AC PITMASTER-SERIES**  
Number of Fixtures :  
Location :  
Beam Pattern : **90°**  
Part # : **LSG066090TRHD**



# DC | WORK AREA LIGHTING

## Product Information

Project Name:  
Date:  
Type:

### Application

The PitMaster has earned it's reputation for being the ultimate Heavy Duty LED light from the combination of it's die-cast aluminum housing, unbreakable polycarbonate lens, integrated deutsch connector, reinforced gasketed bezel, and a strengthened trunnion mounting bracket.

## SPECIFICATIONS PITMASTER 30 LED

### Mechanical Information:

Fixture Weight:	12.34 lbs (5.6kg)
Shipping Weight:	13.65 lbs (6.19kg)
Mounting:	Single Bolt M10

### Electric Specifications:

Operating Voltage:	11-65VDC
Wattage:	150W
Operating Temp:	-40°C ~ 85°C
Vibration:	15.6Grms
Connector:	2 Pin Deutsch

### Construction:

Housing:	Die-Cast 6061 Aluminum
Finish:	Gloss Black & Gloss Yellow Bezel
Lens:	Polycarbonate Lens

### LED

LED:	XP-L(CREE)
Amp Draw:	12.5A @ 12VDC
Lifespan:	50,000 hr

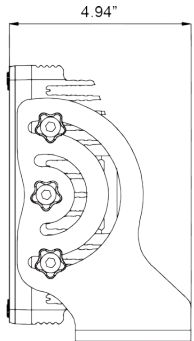
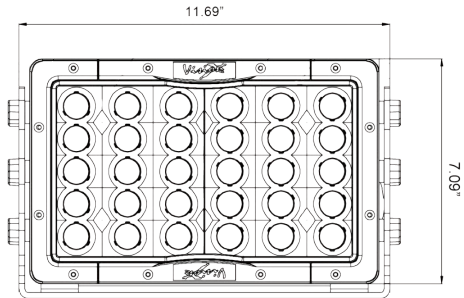
### RATINGS:

EMC Emission:	(CISPR 25) Edition 3.0 (2008-03) Class 3
Ingress Protection:	IP-68, IP69k



PART #:	BEAM PATTERN
1 MIL-PMX3010	Flood 10°
MIL-PMX3025	Flood 25°
MIL-PMX3040	Flood 40°
MIL-PMX3060	Flood 60°
MIL-PMX3090	Flood 90°
MIL-PMX30e3065	Elliptical 30/65°

### 2D DRAWING:



# DC | WORK AREA LIGHTING

## Product Information

Project Name:  
Date:  
Type:

### Application

The PitMaster has earned it's reputation for being the ultimate Heavy Duty LED light from the combination of it's die-cast aluminum housing, unbreakable polycarbonate lens, integrated deutsch connector, reinforced gasketed bezel, and a strengthened trunnion mounting bracket.

## SPECIFICATIONS PITMASTER 60 LED

### Mechanical Information:

Fixture Weight:	26.46 lbs (12kg)
Shipping Weight:	27.82lbs (12.62kg)
Mounting:	Single Bolt M10

### Electric Specifications:

Operating Voltage:	11-65VDC
Wattage:	300W
Operating Temp:	-40°C ~ 85°C
Vibration:	15.6Grms
Connector:	2 Pin Deutsch

### Construction:

Housing:	Die-Cast 6061 Aluminum
Finish:	Gloss Black & Gloss Yellow Bezel
Lens:	Polycarbonate Lens

### LED

LED:	XP-L(CREE)
Amp Draw:	25A @ 12VDC
Lifespan:	50,000 hr

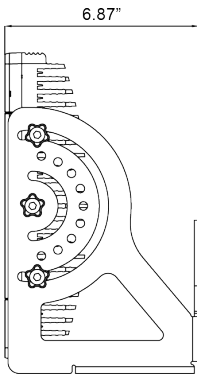
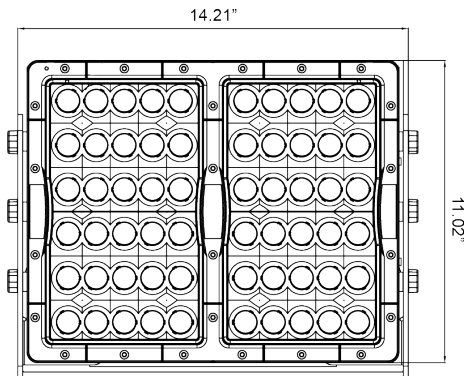
### RATINGS:

EMC Emission:	(CISPR 25) Edition 3.0 (2008-03) Class 3
Ingress Protection:	IP-68, IP69k



PART #:	BEAM PATTERN
2 MIL-PMX6010	Flood 10°
MIL-PMX6025	Flood 25°
MIL-PMX6040	Flood 40°
MIL-PMX6060	Flood 60°
MIL-PMX6090	Flood 90°
MIL-PMX60e3065	Elliptical 30/65°

### 2D DRAWING:





**Project Name:**  
**Date:**  
**Type:**



## 2D DRAWING:



<b>EMC Emission:</b>	Compliance to EN55015, EN55022 (CISPR22) Class B, EN61000-3-2 Class C (@Load ≥ 50%); EN61000-3-3
<b>EMC Immunity:</b>	Compliance to EN61000-4-2,3,4,5,6,8,11, EN61547, EN55024, Light Industry Level (surge immunity Line-Earth 4KV, Line-Line 2KV)
<b>Ingress Protection:</b>	IP-68, IP69k

## Application

Designed to outshine and outlast the competition, the AC PitMaster fixture features advanced electronic technology like Pulse Width Modulation, Electronic Thermal Management, and a Redundant Circuit Design (60 LED) that allow the fixture to function even if half of the light should fail in harsh conditions. This is part of the effort by Vision X to ensure that the PitMaster fixture is the most dependable LED fixture in the workplace.

## SPECIFICATIONS

### Mechanical Information:

<b>Fixture Weight:</b>	22.05 lbs (10kg)
<b>Shipping Weight:</b>	26.9 lbs (12.2kg)
<b>Mounting/ Entries: (See Accessories)</b>	(1) 3/4" NPT - TOP (2) 3/4" NPT 90° - SIDES (2) 3/4" NPT 45° - SIDES

### Electric Specifications:

<b>Operating Voltage:</b>	90 - 305V AC 127-431V DC
<b>Wattage:</b>	140W
<b>Operating Temp:</b>	-40°C ~ 60°C
<b>THD:</b>	<20% (@load≥50% / 115VAC,230VAC) (@load≥75% / 277VAC)
<b>Power Factor:</b>	≥ 0.98/115VAC ≥ 0.95/230VAC ≥ 0.92/277VAC
<b>Short Circuit:</b>	Constant Current Limiting, Recovers Automatically After Fault Condition is Removed
<b>Frequency:</b>	47-63Hz
<b>Vibration:</b>	15.6Grms

### Construction:

<b>Housing:</b>	Die-Cast 6061 Aluminum
<b>Finish:</b>	Gloss Grey
<b>Lens:</b>	Polycarbonate Lens

## LED Light Engine / Driver

<b>LED:</b>	XP-L(CREE)
<b>Amp Draw:</b>	1.22A @ 115VAC 0.61A @ 230VAC 0.51A @ 277VAC
<b>Lifespan:</b>	50,000 hr



**Project Name:**  
**Date:**  
**Type:**



## 2D DRAWING:



<b>EMC Emission:</b>	Compliance to EN55015, EN55022 (CISPR22) Class B, EN61000-3-2 Class C (@Load ≥ 50%); EN61000-3-3
<b>EMC Immunity:</b>	Compliance to EN61000-4-2,3,4,5,6,8,11, EN61547, EN55024, Light Industry Level (surge immunity Line-Earth 4KV, Line-Line 2KV)
<b>Ingress Protection:</b>	IP-68, IP69k







**Project Name:**  
**Date:**  
**Type:**

### Technical Information:

<b>Input Voltage:</b>	100-240V AC
<b>Output Voltage:</b>	+24V = 6.3A

### Electric Specifications:

<b>Operating Temp:</b>	-40°C ~ 80°C
<b>Vibration:</b>	10~ 500Hz

### RATINGS:

<b>EMC Emission:</b>	Compliance to EN551015, EN55022 (CISPR22) Class B, EN61000-3-2 Class C, EN6100-3-3
<b>Ingress Protection:</b>	IP-67, IP65



**NOTES:**

[illegible]



**VISION X USA**  
1601 Boundary Blvd  
Auburn WA 98001  
United States of America  
P: 253-218-2900  
[www.vxindustrial.com](http://www.vxindustrial.com)



**VISION X ASIA**  
23-7 Dongtansandan  
9-gil Dongtan-myeon Hwaseong-si  
Gyeonggi-do 18487, Korea  
P: 82-32-515-4814  
[www.visionxlighting.com](http://www.visionxlighting.com)