



LOADER LIGHTING

For Models : All Large Mining Class Loaders

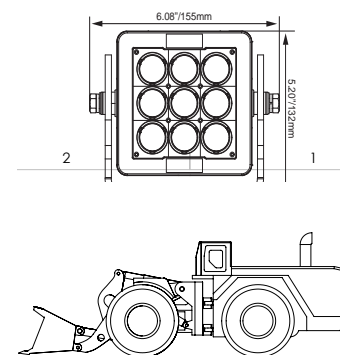
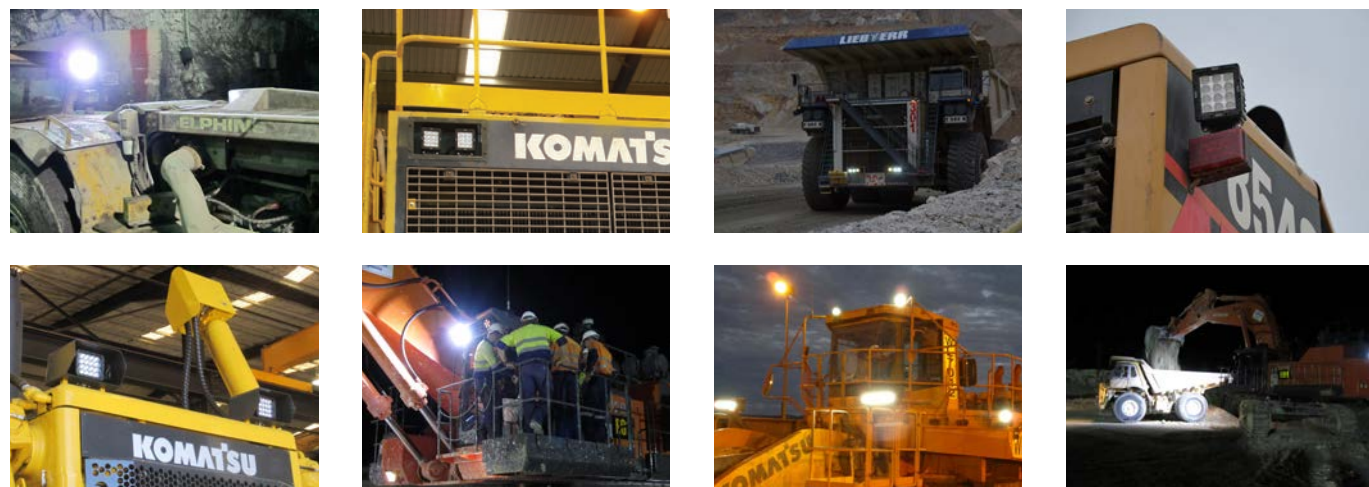


LED | LIGHTING CATALOG



ENGINEERED LIGHTING SOLUTIONS

Vision X lighting fixtures are not merely lighting systems, they are engineered lighting solutions. They provide increased efficiency, increased safety, decreased environmental impact, and decreased costs. Vision X LED lights offer a large increase in energy efficiency over older technologies while also increasing the safety and productivity of the working environment by outputting 80% more light than the fixtures used previously.



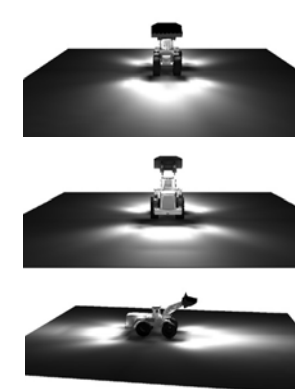
2D BLUEPRINT

Vision X Lighting begins each project with a customer provided list of machines to be retrofitted, then gathers the technical information for those machines.



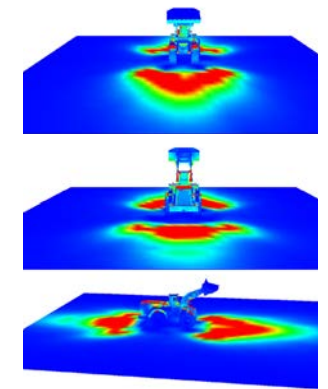
3D MODEL

A 3D model is built to the customer's specifications, then carried over into the rendering.



SIMULATION RENDER

A simulation rendering ensures the final product will meet the customer's lighting requirements.

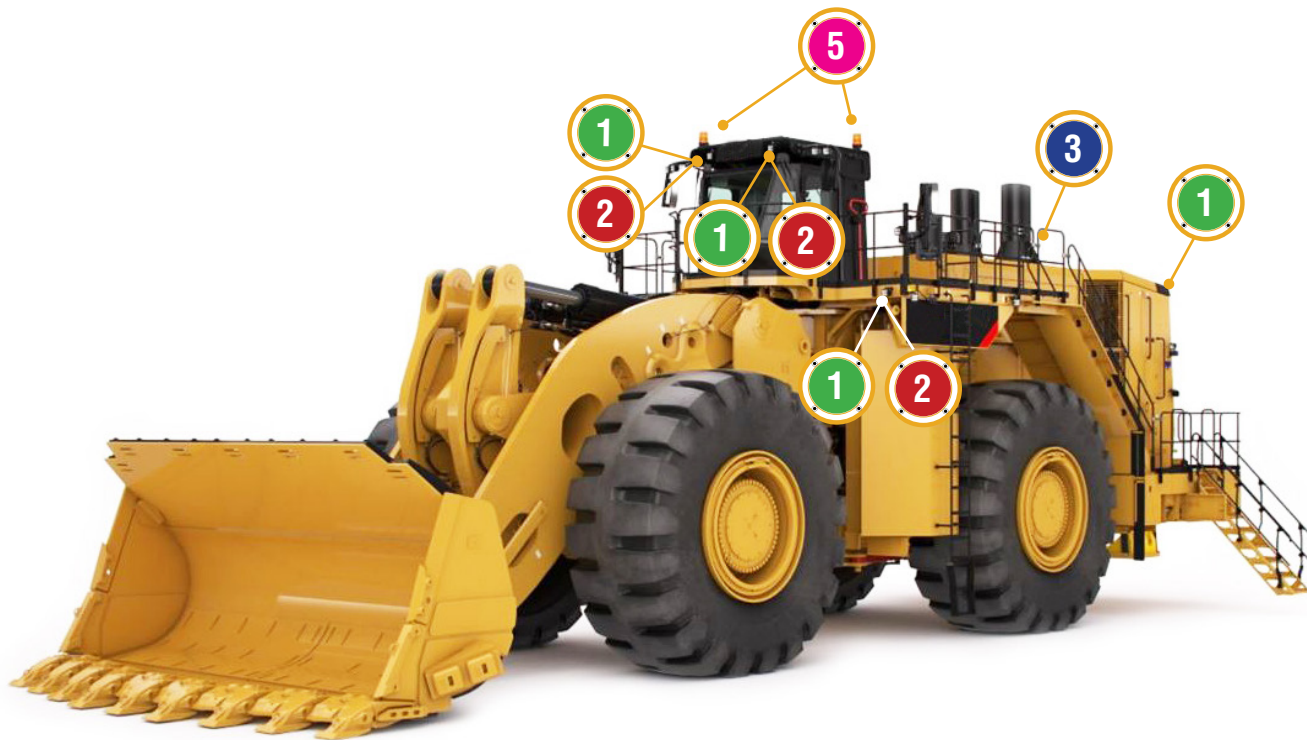


SOLUTION

Vision X Lighting creates a complete breakdown of the customer's specific needs to meet their safety requirements.



LOADER LIGHTING FITOUT GUIDE



1 BT-SERIES
FORWARD LIGHTING
BT-SERIES WORK LIGHT
Number of Fixtures : **Vehicle Specific**
Location : **Front, Rear**
Beam Pattern : **60° Flood**
Optional, Elliptical 30/65°
Part # : **BHB071260L**



2 BT-SERIES
OPTIONAL WORK AREA LIGHTING
BT-SERIES WORK LIGHT
Number of Fixtures : **Vehicle Specific**
Location : **Front, Rear**
Beam Pattern : **60° Flood**
Optional, Elliptical 30/65°
Part # : **BHB072060**



3 BT-4 FLOOD
LADDER & ENGINE LIGHTING
BT-SERIES WORK LIGHT
Number of Fixtures : **Vehicle Specific**
Location : **Top Cab**
Beam Pattern : **60° Flood**
Part # : **BLB050460**



4 ID BOARD
ACCESSORY LIGHTING
2&3 DIGIT LED ID BOARDS
Number of Fixtures : **1**
Location : **Side Panel**
Colors Available : **Green, Red, Amber in 2&3 Digits**
Part # : **MIL-ID02R (Red Shown)**



5 HD BEACON
ACCESSORY LIGHTING
HEAVY DUTY BEACON
Number of Fixtures : **1**
Location : **Top of Cab**
Colors Available : **Green, Red, Blue, Amber, White**
Part # : **MIL-HDBA (Amber Shown)**



DRIVING / WORK AREA LIGHTING

Product Information

Project Name:
Date:
Type:

Application

OEM replacements will out perform the factory lighting by over 80% on the effective work area. Simple quick connect wiring allows for one time wiring and no further electrical wiring to change the fixture. 3D analysis allows for site specific aiming with our patented aiming system. Industry leading LED light output, size, weight and reliability for reduced unscheduled maintenance.

SPECIFICATIONS BHB HEAVY DUTY 12 LED

Mechanical Information:

| | |
|------------------|-------------------|
| Fixture Weight: | 4.96 lbs (2.25kg) |
| Shipping Weight: | 6.05 lbs (2.74kg) |
| Mounting: | Single Bolt M10 |

Electric Specifications:

| | |
|--------------------|---------------|
| Operating Voltage: | 11-65VDC |
| Wattage: | 84W |
| Operating Temp: | -40°C ~ 80°C |
| Vibration: | 60Grms |
| Connector: | 2 Pin Deutsch |

Construction:

| | |
|----------|----------------------------------|
| Housing: | Die-Cast 6061 Aluminum |
| Finish: | Gloss Black & Gloss Yellow Bezel |
| Lens: | Polycarbonate Lens |

LED

| | |
|-----------|------------|
| LED: | XP-L(CREE) |
| Amp Draw: | 7.0A@12V |
| Lifespan: | 50,000 hr |

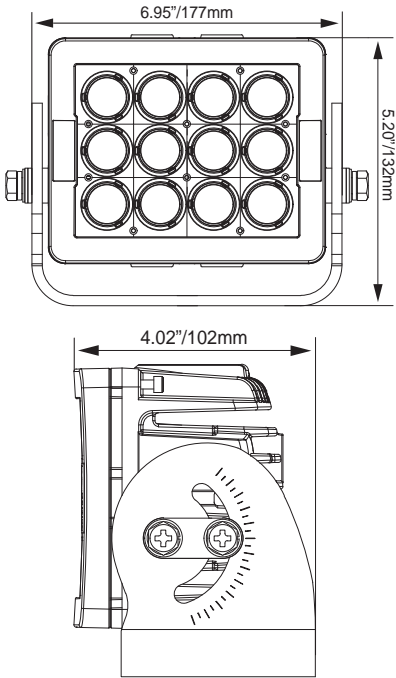
RATINGS:

| | |
|---------------------|---|
| EMC Emission: | (CISPR 25) Edition 3.0 (2008-03) Class 3 |
| Ingress Protection: | IP-68, IP69k |



| PART #: | BEAM PATTERN |
|--------------|-------------------|
| 1 BHB071260 | Flood 60° |
| BHB07123065L | Elliptical 30/65° |

2D DRAWING:



DRIVING / WORK AREA LIGHTING

Product Information

Project Name:
Date:
Type:

Application

OEM replacements will out perform the factory lighting by over 80% on the effective work area. Simple quick connect wiring allows for one time wiring and no further electrical wiring to change the fixture. 3D analysis allows for site specific aiming with our patented aiming system. Industry leading LED light output, size, weight and reliability for reduced unscheduled maintenance.

SPECIFICATIONS BHB HEAVY DUTY 20 LED

Mechanical Information:

| | |
|------------------|--------------------|
| Fixture Weight: | 9.25 lbs (4.2kg) |
| Shipping Weight: | 10.35 lbs (4.69kg) |
| Mounting: | Single Bolt M10 |

Electric Specifications:

| | |
|--------------------|---------------|
| Operating Voltage: | 11-65VDC |
| Wattage: | 140W |
| Operating Temp: | -40°C ~ 80°C |
| Vibration: | 60Grms |
| Connector: | 2 Pin Deutsch |

Construction:

| | |
|----------|----------------------------------|
| Housing: | Die-Cast 6061 Aluminum |
| Finish: | Gloss Black & Gloss Yellow Bezel |
| Lens: | Polycarbonate Lens |

LED

| | |
|-----------|------------|
| LED: | XP-L(CREE) |
| Amp Draw: | 11.7A@12V |
| Lifespan: | 50,000 hr |

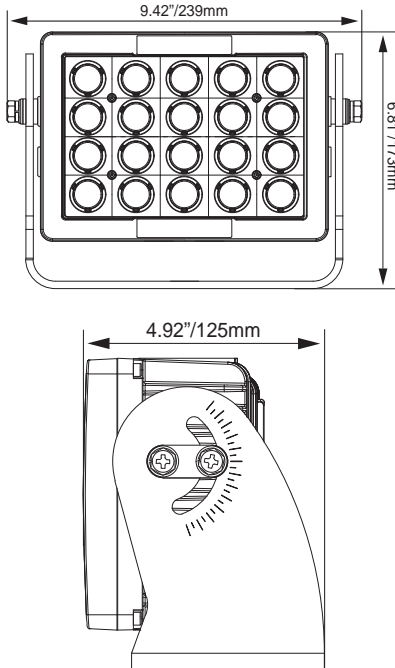
RATINGS:

| | |
|---------------------|---|
| EMC Emission: | (CISPR 25) Edition 3.0 (2008-03) Class 3 |
| Ingress Protection: | IP-68, IP69k |



| PART #: | BEAM PATTERN |
|-------------|-------------------|
| 2 BHB072060 | Flood 60° |
| BHB07203065 | Elliptical 30/65° |

2D DRAWING:





LADDER & ENGINE LIGHTING

Product Information

Project Name:
Date:
Type:

Application

OEM replacements will out perform the factory lighting by over 80% on the effective work area. Simple quick connect wiring allows for one time wiring and no further electrical wiring to change the fixture. 3D analysis allows for site specific aiming with our patented aiming system. Industry leading LED light output, size, weight and reliability for reduced unscheduled maintenance.

SPECIFICATIONS BLB HEAVY DUTY 4 LED

Mechanical Information:

| | |
|------------------|----------------------|
| Fixture Weight: | 1.05 lbs (0.48kg) |
| Shipping Weight: | 2.20 lbs (1.0kg) |
| Mounting: | Single Bolt Trunnion |

Electric Specifications:

| | |
|--------------------|---------------|
| Operating Voltage: | 9-32VDC |
| Wattage: | 20W |
| Operating Temp: | -40°C ~ 85°C |
| Vibration: | 21Grms |
| Connector: | 2 Pin Deutsch |

Construction:

| | |
|----------|------------------------|
| Housing: | Die-Cast 6061 Aluminum |
| Finish: | Gloss Black |
| Lens: | Polycarbonate Lens |

LED

| | |
|-----------|--------------------------------|
| LED: | XP-L(CREE) |
| Amp Draw: | 1.67A @ 12VDC 0.83A @ 24VDC |
| Lifespan: | 50,000 hr |

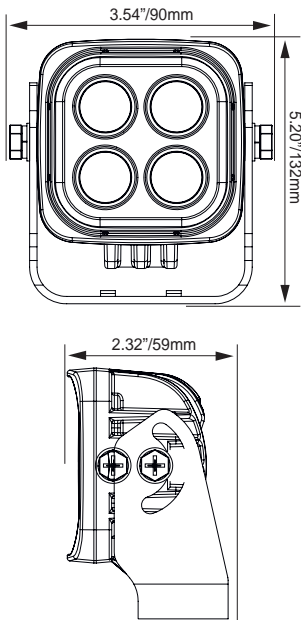
RATINGS:

| | |
|---------------------|--------------------|
| EMC Emission: | (CISPR 25) Class 1 |
| Ingress Protection: | IP-68, IP69k |



| | |
|--------------------|---------------------|
| PART #: | BEAM PATTERN |
| 3 BLB050460 | Flood 60° |

2D DRAWING:





ACCESSORY LIGHTING

Product Information

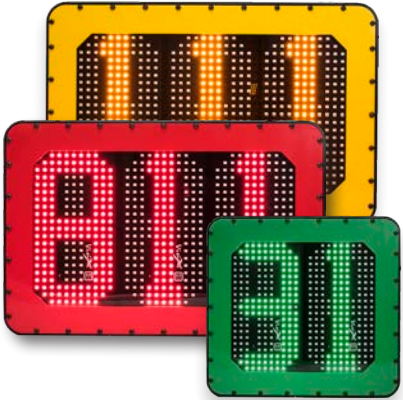
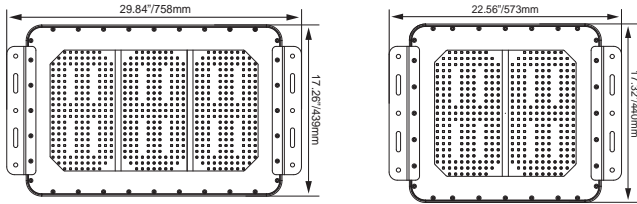
Project Name:
Date:
Type:

ID Board Sign Information:

- Auto Dim/Bright for Day and Night time Operation
- Available in 2&3 Digit Models
- Red, Yellow, or Green Face Plates

| | |
|------------------|---|
| Fixture Weight: | 2 lbs (0.9kg) |
| Wattage | 3Digit : 117W 2Digit : 87W |
| Amp Draw | 3Digit : 9.75A@12V 4.88A@24V 2Digit : 6.5A@12V 3.25A@24V |
| Vibration Rating | 15.6 Grms |
| Application | Vehicle Identification / Load Cap. |

2D DRAWING:



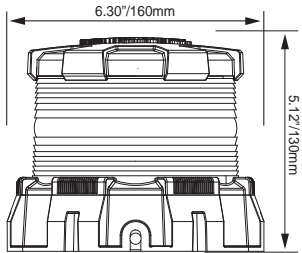
| PART #: | #LEDs / COLOR |
|-------------|---------------|
| 4 MIL-ID02A | 2 Amber |
| MIL-ID02R | 2 Red |
| MIL-ID02G | 2 Green |
| MIL-ID03A | 3 Amber |
| MIL-ID03R | 3 Red |
| MIL-ID03G | 3 Green |

Heavy Duty Beacon Information:

- Simulated Rotation or Flashing Functions
- Available in Amber, Blue, Green, Red, and White LEDs

| | |
|------------------|-----------------------------|
| Fixture Weight: | 2.96 lbs (1.34kg) |
| Wattage | 36W |
| Amp Draw | 3.0A @12V 1.5A@24V |
| Vibration Rating | 15.6 Grms |
| Application | Full 360° Visibility Beacon |

2D DRAWING:



| PART #: | COLOR |
|------------|-------|
| 5 MIL-HDBA | Amber |
| MIL-HDBB | Blue |
| MIL-HDBG | Green |
| MIL-HDBR | Red |
| MIL-HDBW | White |





VISION X USA

1601 Boundary Blvd
Auburn WA 98001
United States of America
P: 253-218-2900
www.vxindustrial.com



VISION X ASIA

23-7 Dongtansandan
9-gil Dongtan-myeon Hwaseong-si
Gyeonggi-do 18487, Korea
P: 82-32-515-4814
www.visionxasia.com