

SEINER BOAT LIGHTING

Maritime Applications



LED | LIGHTING CATALOG



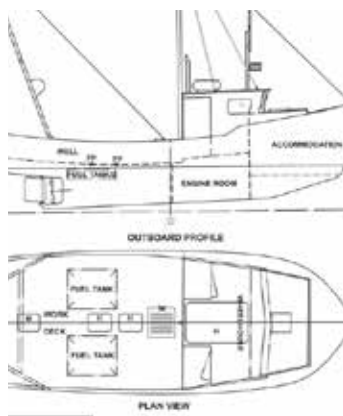
ENGINEERED LIGHTING SOLUTIONS

Vision X lighting fixtures are not merely lighting systems, they are engineered lighting solutions. They provide increased efficiency, increased safety, decreased environmental impact, and decreased costs. Vision X LED lights offer a large increase in energy efficiency over older technologies while also increasing the safety and productivity of the working environment by outputting 80% more light than the fixtures used previously.



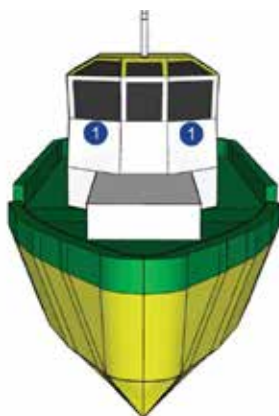


SOLUTION PROCESS



2D BLUEPRINT

Vision X Lighting begins each project with a customer provided list of machines to be retrofitted, then gathers the technical information for those machines.



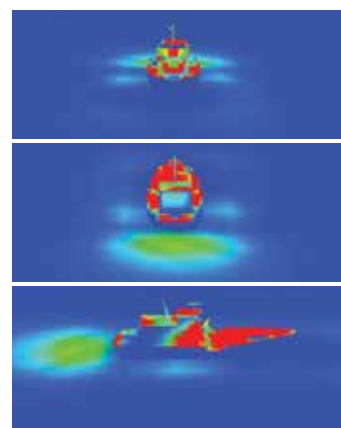
3D MODEL

A 3D model is built to the customer's specifications, then carried over into the rendering.



SIMULATION RENDER

A simulation rendering ensures the final product will meet the customer's lighting requirements.

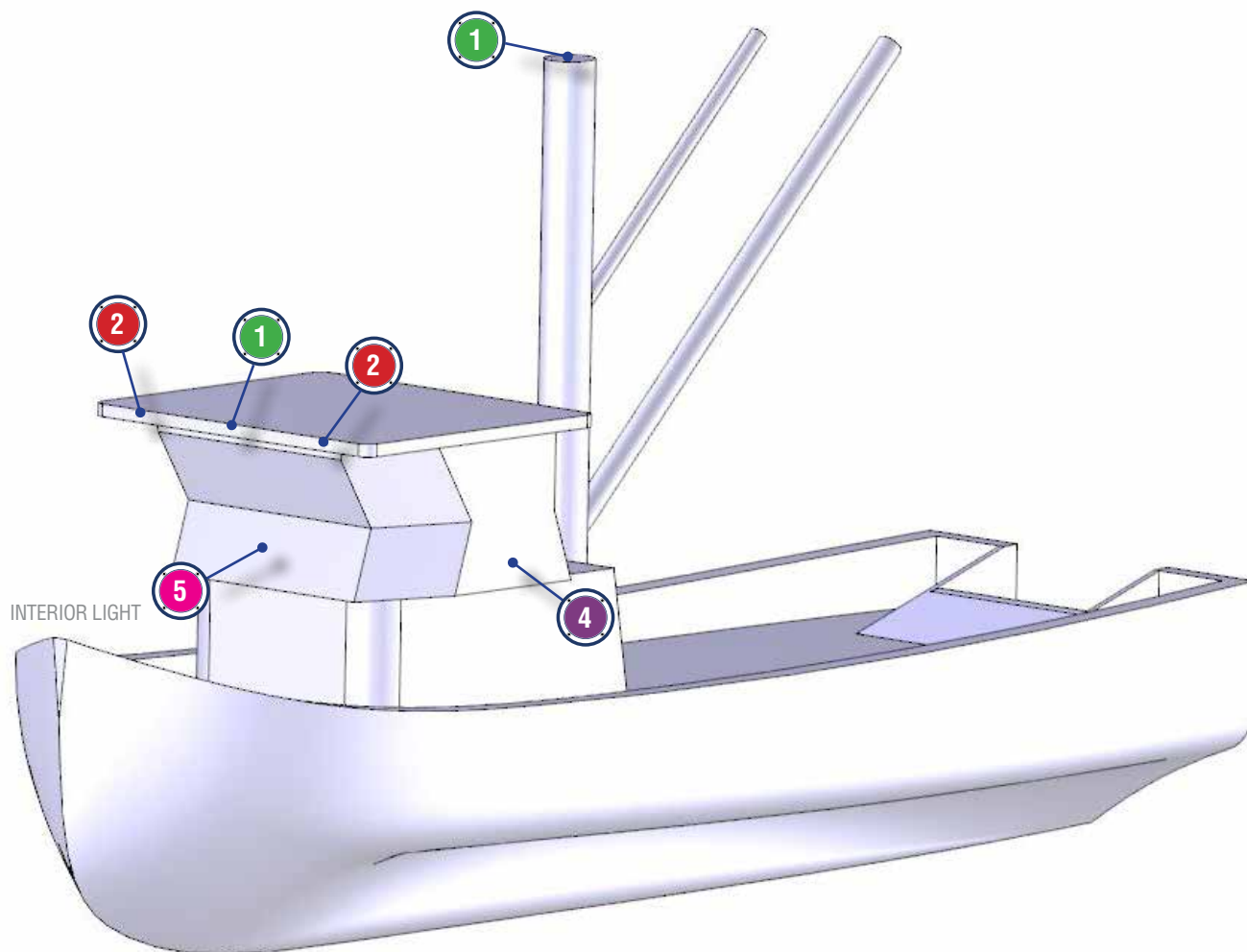


SOLUTION

Vision X Lighting creates a complete breakdown of the customer's specific needs to meet their lighting and safety requirements.



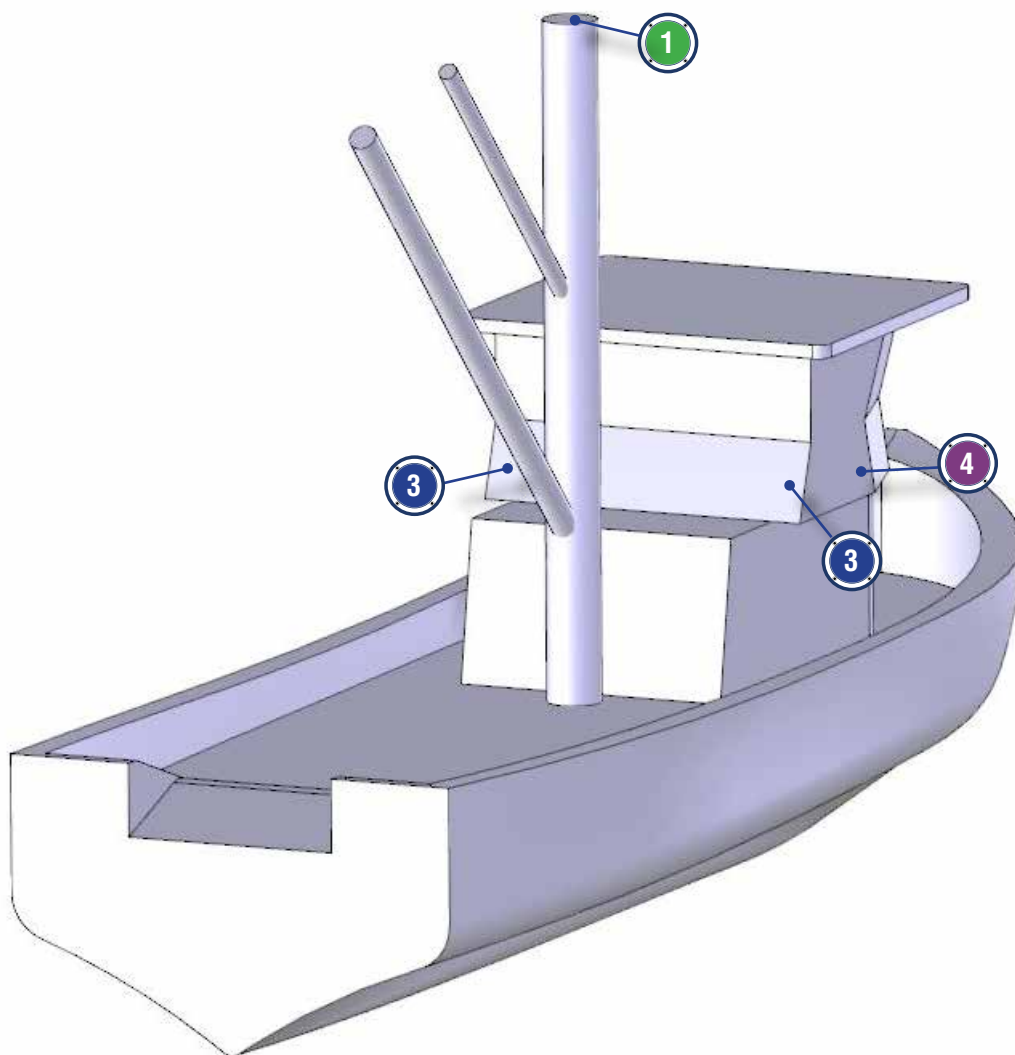
SEINER LIGHTING FITOUT GUIDE



1 AC 280W
MAST LIGHTING
AC-SERIES MARINE LIGHT
Number of Fixtures : **Vessel Specific**
Locations : **Mast**
Beam Pattern : **10°, 25°, 40°, 60°, 90°**
Part # : **LSG00660xxSTRHDQC**



2 AC 140W
SPREADER LIGHTING
AC-SERIES MARINE LIGHT
Number of Fixtures : **Vessel Specific**
Locations : **Rear Mast**
Beam Pattern : **10°, 25°, 40°, 60°, 90°**
Part # : **LSG0630xxSTRHDQC**



3

JBOX 50W



SPREADER LIGHTING AC-SERIES MARINE LIGHT

Number of Fixtures : **Vessel Specific**
Locations : **Exterior Cabin House**
Beam Pattern : **90°, 180°**
Part # : **LSG0330xxSTRHDQC**

4

JBOX 10W



CABIN LIGHTING AC-SERIES MARINE LIGHT

Number of Fixtures : **Vessel Specific**
Locations : **Walkway, Stairwells**
Beam Pattern : **180°**
Part # : **LSGSM40180FQC**

5

LINEAR LIGHT



INTERIOR LIGHTING AC-SERIES MARINE LIGHT

Number of Fixtures : **Vessel Specific**
Locations : **Interior Rooms**
Beam Pattern : **180°**
Part # : **LLG0212180FSRQC (1ft)**
LLG0221180FSRQC (2ft)
LLG0242180FSRQC (4ft)



MAST LIGHTING

Product Information

Project Name:

Date:

Type:

Application

Designed to outshine and outlast the competition, the AC Mast Lighting fixture features advanced electronic technology like Pulse Width Modulation, Electronic Thermal Management, and a Redundant Circuit Design (60 LED) that allow the fixture to function even if half of the light should fail for unknown reasons. This is part of the effort by Vision X to ensure that the AC Boom Lighting fixture is the most dependable LED fixture in the workplace.

SPECIFICATIONS 280-WATT HIGH LED

Mechanical Information:

Fixture Weight:	37.05 lbs (16.81kg)
Shipping Weight:	40.05 lbs (18.17kg)
Mounting/ Entries: (See Accessories)	(1) 3/4" NPT - TOP (2) 3/4" NPT 90° - SIDES (2) 3/4" NPT 45° - SIDES

Electric Specifications:

Operating Voltage:	90 - 305V AC 127 - 431V DC
Lumens:	36000 - 42000 lm
Wattage:	280W
Operating Temp:	-40°C ~ 60°C
THD:	<20% (@load≥50% / 115VAC,230VAC) (@load≥75% / 277VAC)
Power Factor:	≥ 0.98/115VAC ≥ 0.95/230VAC ≥ 0.92/277VAC
Short Circuit:	Constant Current Limiting, Recovers Automatically After Fault Condition is Removed
Frequency:	47-63Hz
Vibration:	15.6Grms

Construction:

Housing:	Die-Cast 6061 Aluminum
Finish:	Gloss Grey
Lens:	Polycarbonate Lens

LED Light Engine / Driver

LED:	XP-LHD(CREE)
Amp Draw:	2.43A @ 115VAC 1.22A @ 230VAC 1.01A @ 277VAC
Lifespan:	50,000 hr

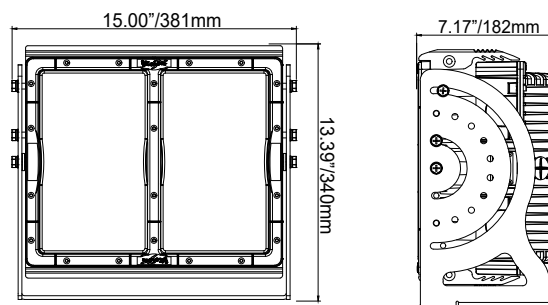


PART #:

BEAM PATTERN

1 LSG00660xxSTRHDQC	10°, 25°, 40°, 60°, 90°
LSG02140180STRHDQC	180° Ultra Wide Flood

2D DRAWING:



RATINGS:

EMC Emission:	Compliance to EN55015, EN55022 (CISPR22) Class B, EN61000-3-2 Class C (@Load ≥ 50%); EN61000-3-3
EMC Immunity:	Compliance to EN61000-4-2,3,4,5,6,8,11, EN61547, EN55024, Light Industry Level (surge immunity Line-Earth 4KV, Line-Line 2KV)
UL 1598A Marine:	✓
Ingress Protection:	IP-68, IP69k





SPREADER LIGHTING

Product Information

Project Name:

Date:

Type:

Application

Designed to outshine and outlast the competition, the AC Spreader Lighting fixture features advanced electronic technology like Pulse Width Modulation, Electronic Thermal Management, and a Redundant Circuit Design (30 LED) that allow the fixture to function even if half of the light should fail for unknown reasons. This is part of the effort by Vision X to ensure that the AC Spreader Lighting fixture is the most dependable LED fixture in the workplace.

SPECIFICATIONS 140-WATT HIGH VOLT LED

Mechanical Information:

Fixture Weight:	22.05 lbs (10kg)
Shipping Weight:	26.9 lbs (12.2kg)
Mounting/ Entries: (See Accessories)	(1) 3/4" NPT - TOP (2) 3/4" NPT 90° - SIDES (2) 3/4" NPT 45° - SIDES

Electric Specifications:

Operating Voltage:	90 - 305V AC 127 - 431V DC
Lumens:	18000 - 21000 lm
Wattage:	140W
Operating Temp:	-40°C ~ 60°C
THD:	<20% (@load≥50% / 115VAC, 230VAC) (@load≥75% / 277VAC)
Power Factor:	≥ 0.98/115VAC ≥ 0.95/230VAC ≥ 0.92/277VAC
Short Circuit:	Constant Current Limiting, Recovers Automatically After Fault Condition is Removed
Frequency:	47-63Hz
Vibration:	15.6Grms

Construction:

Housing:	Die-Cast 6061 Aluminum
Finish:	Gloss Grey
Lens:	Polycarbonate Lens

LED Light Engine / Driver

LED:	XP-L(CREE)
Amp Draw:	1.22A @ 115VAC 0.61A @ 230VAC 0.51A @ 277VAC
Lifespan:	50,000 hr



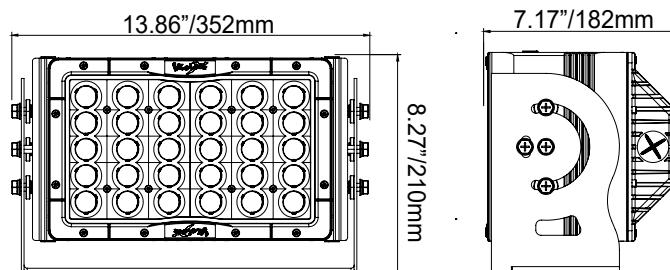
PART #:

2 LSG0630xxSTRHDQC
LSG0270STRHDQC

BEAM PATTERN

10°, 25°, 40°, 60°, 90°
180° Ultra Wide Flood

2D DRAWING:



RATINGS:

EMC Emission:

Compliance to EN55015, EN55022 (CISPR22) Class B, EN61000-3-2 Class C (@Load ≥ 50%); EN61000-3-3

EMC Immunity:

Compliance to EN61000-4-2, 3, 4, 5, 6, 8, 11, EN61547, EN55024, Light Industry Level (surge immunity Line-Earth 4KV, Line-Line 2KV)

UL 1598A Marine:



Ingress Protection:

IP-68, IP69k



SPREADER LIGHTING

Product Information

Project Name:

Date:

Type:

Application

Designed to outshine and outlast the competition, the Spreader Lighting fixture features advanced electronic technology like Pulse Width Modulation, Electronic Thermal Management, and a Redundant Circuit Design that allow the fixture to function even if half of the light should fail for unknown reasons. This is part of the effort by Vision X to ensure that the Machine House Lighting fixture is the most dependable LED fixture in the workplace.

SPECIFICATIONS 50-WATT JUNCTION BOX

Mechanical Information:

Fixture Weight:	8 lbs (3.8kg)
Shipping Weight:	10 lbs (4.5kg)
Mounting/ Entries: (See Accessories)	(6) 3/4" NPT - SIDES

Electric Specifications:

Operating Voltage:	90 - 305VAC 127 - 431VDC
Lumens:	6000 - 7000 lm
Wattage:	50W
Operating Temp:	-40°C - 60°C
THD:	<20% (@load≥50% / 115VAC,230VAC) (@load≥75% / 277VAC)
Power Factor:	≥ 0.98/115VAC ≥ 0.95/230VAC ≥ 0.92/277VAC
Short Circuit:	Constant Current Limiting, Recovers Automatically After Fault Condition is Removed
Frequency:	47-63Hz
Vibration:	15.6Grms

Construction:

Housing:	Die-Cast 6061 Aluminum
Finish:	Gloss Grey
Lens:	Polycarbonate Lens

LED Light Engine / Driver

LED:	MHB-B(CREE)
Amp Draw:	0.43A @ 115VAC 0.22A @ 230VAC 0.18A @ 277VAC
Lifespan:	50,000 hr

Built-In Battery Backup System Available

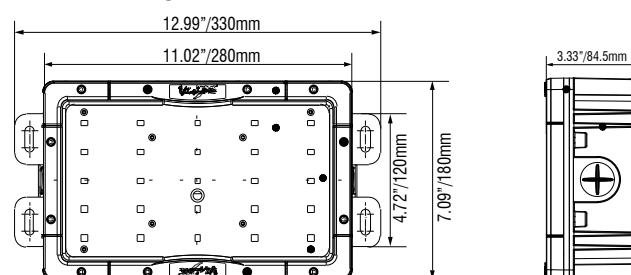


PART #:

BEAM PATTERN

3 LSG0330xxSTRHDQC	10°, 25°, 40°, 60°, 90°
LSG0225180STRHDQC	180° Ultra Wide Flood

2D DRAWING:



RATINGS:

EMC Emission:	Compliance to EN55022,EN61000-3-2 Class A ,EN61000-3-3
EMC Immunity:	Compliance to EN55024, EN61000-4-2,3,4,5,6,8,11; light industry level(surge 2KV), criteria A
UL 1598A Marine:	✓
Ingress Protection:	IP-68, IP69k





CABIN LIGHTING

Product Information

Project Name:

Date:

Type:

Application

Designed to outshine and outlast the competition, the Walkway Lighting fixture features advanced electronic technology like Pulse Width Modulation, Electronic Thermal Management, and a Redundant Circuit Design that allow the fixture to function even if half of the light should fail for unknown reasons. This is part of the effort by Vision X to ensure that the Walkway Lighting fixture is the most dependable LED fixture in the workplace.

SPECIFICATIONS 10-WATT JUNCTION BOX

Mechanical Information:

Fixture Weight:	2 lbs (0.9kg)
Shipping Weight:	4 lbs (1.8kg)
Mounting/ Entries: (See Accessories)	(4) 3/4" NPT - SIDES

Electric Specifications:

Operating Voltage:	90 - 264VAC 127 - 370VDC
Lumens:	1000 lm
Wattage:	10W
Operating Temp:	-40°C ~ 60°C
THD:	<20% (@load≥50% / 115VAC,230VAC) (@load≥75% / 277VAC)
Power Factor:	≥ 0.98/115VAC ≥ 0.95/230VAC ≥ 0.92/277VAC
Short Circuit:	Constant Current Limiting, Recovers Automatically After Fault Condition is Removed
Frequency:	47-63Hz
Vibration:	15.6Grms

Construction:

Housing:	Die-Cast 6061 Aluminum
Finish:	Gloss Grey
Lens:	Polycarbonate Lens

LED Light Engine / Driver

LED:	5630(LG)
Amp Draw:	0.09A @ 115VAC 0.04A @ 230VAC 0.04A @ 277VAC
Lifespan:	50,000 hr



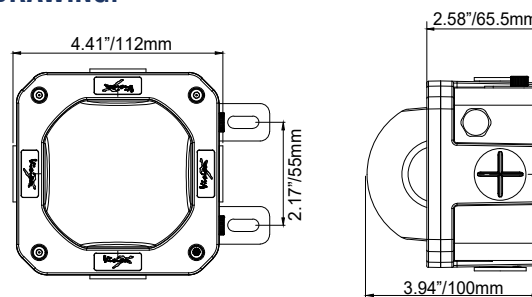
PART #:

4 LSGSM40180FQC

BEAM PATTERN

180° Ultra Wide Flood

2D DRAWING:



RATINGS:

EMC Emission:

Compliance to
EN55022,EN61000-3-2
Class A ,EN61000-3-3

EMC Immunity:

Compliance to EN55024,
EN61000-4-2,3,4,5,6,8,11; light
industry level(surge 2KV), criteria A

UL 1598A Marine:



Ingress Protection:

IP-68, IP69k



INTERIOR LIGHTING

Product Information

Project Name:
Date:
Type:

Application

Designed to outshine and outlast the competition, the Linear Luminaire fixture features advanced electronic technology like Pulse Width Modulation, Electronic Thermal Management, and a Redundant Circuit Design that allow the fixture to function even if half of the light should fail for unknown reasons. This is part of the effort by Vision X to ensure that the Linear Luminaire fixture is the most dependable LED fixture in the workplace.

SPECIFICATIONS 4-FOOT LINEAR

Mechanical Information:

Fixture Weight:	11.6 lbs (5.2kg)
Shipping Weight:	13.65 lbs (6.2kg)
Mounting/ Entries: (See Accessories)	----

Electric Specifications:

Operating Voltage:	90 - 305VAC 127 - 300VDC
Lumens:	4000 - 13400 lm
Wattage:	100W
Operating Temp:	-40°C ~ 40°C
THD:	< 20% (@load≥70% / 100-277VAC)
Power Factor:	≥ 0.99/120VAC ≥ 0.96/220VAC
Short Circuit:	Constant Current Limiting, Recovers Automatically After Fault Condition is Removed
Frequency:	47-63Hz
Vibration:	8.7Grms

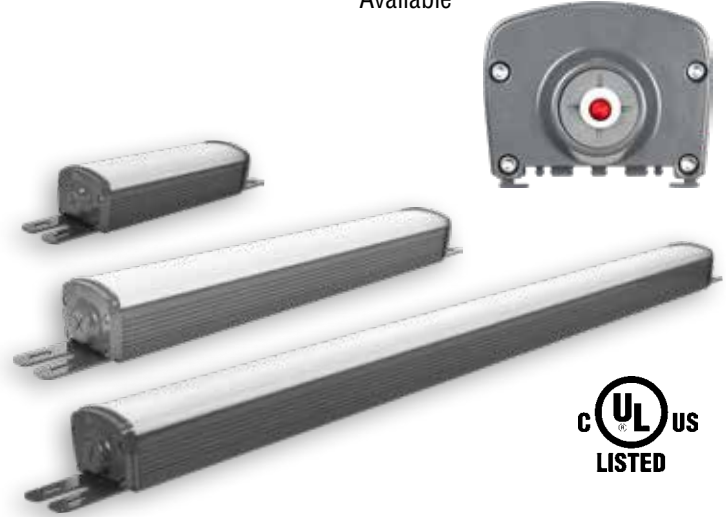
Construction:

Housing:	Die-Cast 6061 Aluminum
Finish:	Gloss Grey
Lens:	Polycarbonate Lens

LED Light Engine / Driver

LED:	MHB-B(CREE)
Amp Draw:	1.0A @ 120VAC 0.55 @ 220VAC
Lifespan:	50,000 hr

Built-In Battery Backup System
Available

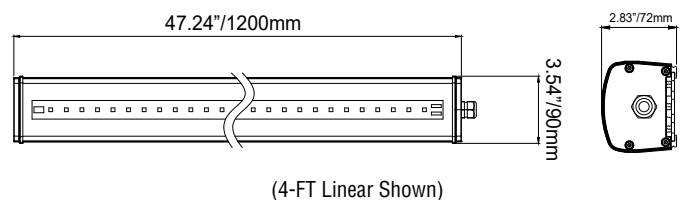


PART #:

BEAM PATTERN / SIZE

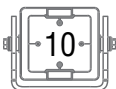
5 LLG0212180FSRQC	180° Ultra Wide Flood / 1ft.
LLG0221180FSRQC	180° Ultra Wide Flood / 2ft.
LLG0242180FSRQC	180° Ultra Wide Flood / 4ft.

2D DRAWING:



RATINGS:

EMC Emission:	Compliance to EN55022, EN61000-3-2 Class A, EN61000-3-3
EMC Immunity:	Compliance to EN55024, EN61000-4-2, 3, 4, 5, 6, 8, 11; light industry level (surge 2KV), criteria A
Ingress Protection:	IP-66, IP-67





NOTES

Additional Information

Project Name:
Date:
Type:

NOTES:

Lined area for notes, consisting of 20 horizontal lines.





VISION X USA
1601 Boundary Blvd
Auburn WA 98001
United States of America
P: 253-218-2900
www.vxmaritime.com



VISION X ASIA
23-7 Dongtansandan
9-gil Dongtan-myeon Hwaseong-si
Gyeonggi-do 18487, Korea
P: 82-32-515-4814
www.visionxlighting.com