



TOP PICK LIGHTING

Maritime Applications

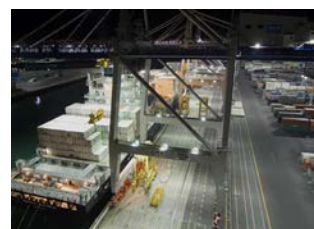
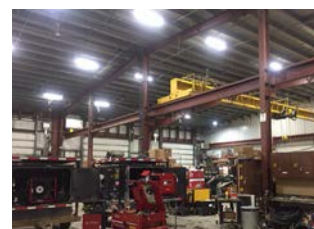


LED | LIGHTING CATALOG

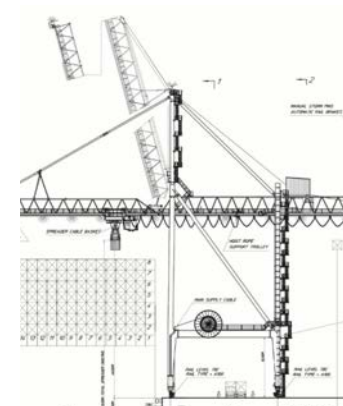


ENGINEERED LIGHTING SOLUTIONS

Vision X lighting fixtures are not merely lighting systems, they are engineered lighting solutions. They provide increased efficiency, increased safety, decreased environmental impact, and decreased costs. Vision X LED lights offer a large increase in energy efficiency over older technologies while also increasing the safety and productivity of the working environment by outputting 80% more light than the fixtures used previously.



SOLUTION PROCESS



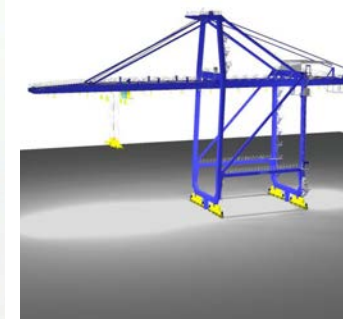
2D BLUEPRINT

Vision X Lighting begins each project with a customer provided list of equipment to be retrofitted, then gathers the technical information for the equipment.



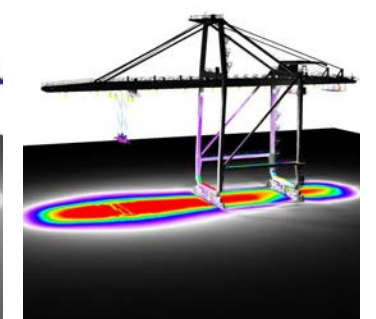
3D MODEL

A 3D model is built to the customer's specifications, then carried over into the rendering.



SIMULATION RENDER

A simulation rendering ensures the final product will meet the customer's lighting requirements.

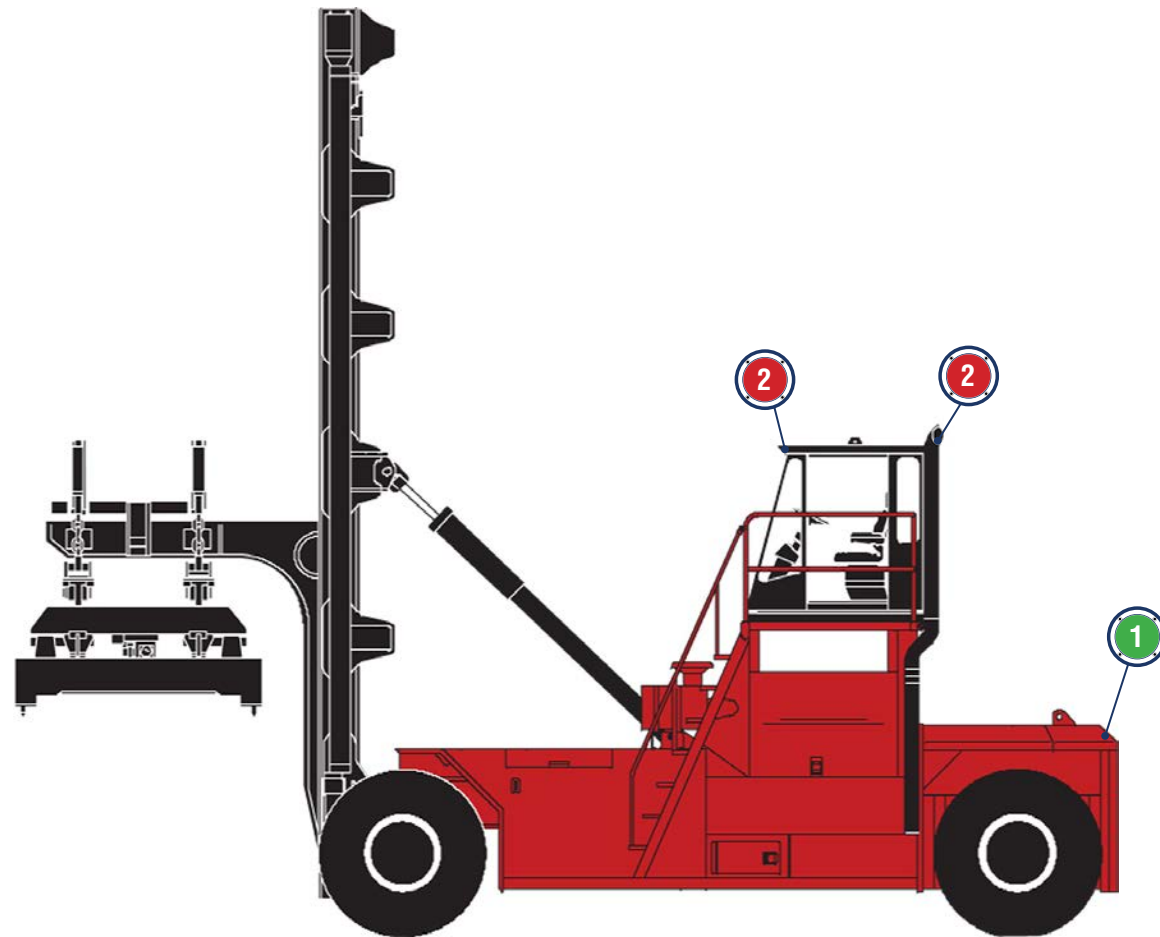


SOLUTION

Vision X Lighting creates a complete breakdown of the customer's specific needs to meet their lighting and safety requirements.



TOP PICK LIGHTING FITOUT GUIDE



1 XIL-UM4440



WORK AREA LIGHTING
UM-SERIES MARINE LIGHT

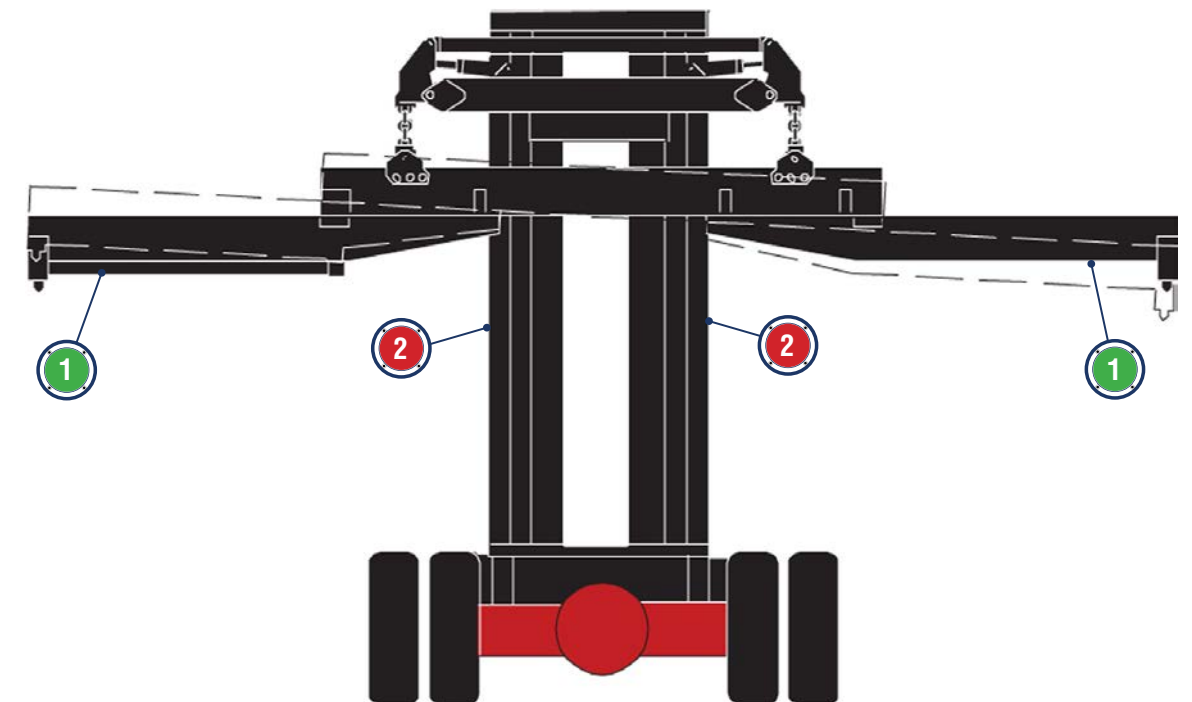
Number of Fixtures : **Equipment Specific**
Locations : **Rear Facing**
Beam Pattern : **40°**
Part # : **XIL-UM4440**

2 XIL-SERIES



LIGHT INDUSTRIAL LIGHTING
SOLSTICE PRIME MARINE LIGHT

Number of Fixtures : **Equipment Specific**
Locations : **Forward Facing**
Beam Pattern : **20°**
Part # : **XIL-SP520**



1 XIL-UM4440



WORK AREA LIGHTING
UM-SERIES MARINE LIGHT

Number of Fixtures : **Equipment Specific**
Locations : **Rear Facing**
Beam Pattern : **40°**
Part # : **XIL-UM4440**

2 XIL-SERIES



LIGHT INDUSTRIAL LIGHTING
SOLSTICE PRIME MARINE LIGHT

Number of Fixtures : **Equipment Specific**
Locations : **Forward Facing**
Beam Pattern : **20°**
Part # : **XIL-SP520**



WORK AREA LIGHTING

Product Information

Project Name:
Date:
Type:

Application

The UM Series features a single stud mount allowing it to replace OEM fixtures with ease, including an integrated deutsch plug mated to factory wiring on most equipment manufacturers. From large-scale mining sites to commercial fog light applications, the UM Series supports reduced energy consumption, is equipped with die-cast aluminum housing, and carries a smoother beam pattern than comparable halogen fixtures.

SPECIFICATIONS XIL-UM4440

Mechanical Information:

Fixture Weight:	2.63 lbs (1.19 kg)
Shipping Weight:	3.8 lbs (1.72 kg)
Mounting/ Entries:	Single Bolt Mounting

Electric Specifications:

Operating Voltage:	11 - 65V DC
Wattage:	21W
Operating Temp:	-40°C ~ +85°C
Vibration:	15.6Grms
Connector:	2 Pin Deutsch

Construction:

Housing:	Die-Cast 6061 Aluminum
Finish:	Gloss Grey
Lens:	Polycarbonate Lens

LED:

LED:	XP-LHD(CREE)
Amp Draw:	1.75A @ 12V
Lifespan:	50,000 hr

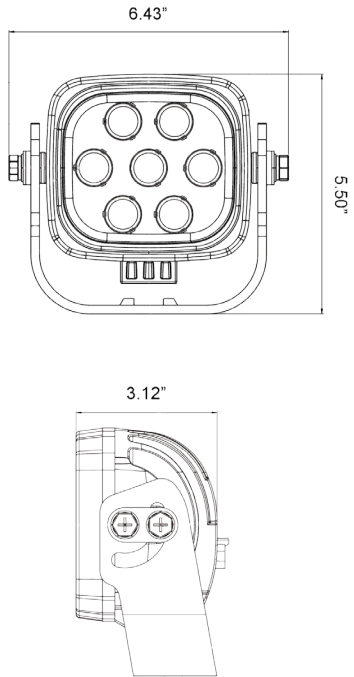
RATINGS:

Ingress Protection:	IP68, IP69K
---------------------	-------------



PART #:	BEAM PATTERN
1 XIL-UM4440	40°

2D DRAWING:



WORK AREA LIGHTING

Product Information

Project Name:
Date:
Type:

Application

The Solstice Prime Series from Vision X combines traditional form factor and single-bolt mounting with the energy-efficient benefits of LED for the ultimate OE upgrade option for commercial and industrial vehicles that use HID and Halogen fixtures.

SPECIFICATIONS SOLSTICE PRIME 5 LED

Mechanical Information:

Fixture Weight:	3.09 lbs (1.4 kg)
Shipping Weight:	4.08 lbs (1.85 kg)
Mounting/ Entries:	Single Bolt

Electric Specifications:

Operating Voltage:	11~ 65V DC
Wattage:	50W
Operating Temp:	-40°C ~ 80°C
Vibration	15.6Grms
Connector:	2 Pin Deutsch

Construction:

Housing:	Die-Cast 6061 Aluminum
Finish:	Gloss Black
Lens:	Polycarbonate Lens

LED:

LED:	XP-L(CREE)
Amp Draw:	4.17A @12V
Lifespan:	50,000 hr

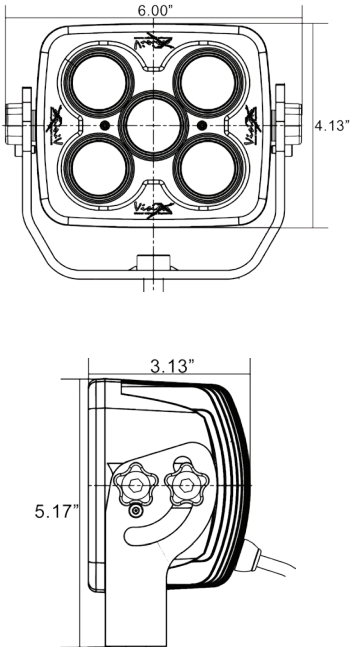
RATINGS:

Ingress Protection:	IP-68, IP-69K
---------------------	---------------



PART #:	BEAM PATTERN
2 XIL-SP520	20°

2D DRAWING:





VISION X USA
1601 Boundary Blvd
Auburn, WA 98001
United States of America
P: 253-218-2900
www.vxmaritime.com



VISION X ASIA
23-7 Dongtansandan
9-gil Dongtan-myeon Hwaseong-si
Gyeonggi-do 18487, Korea
P: 82-32-515-4814
www.visionxlighting.com