

400 | 1000 WATT HPS REPLACEMENT

VXSTRUCTURAL.COM



LED | LIGHTING CATALOG



LIGHTING SOLUTIONS

FOR STRUCTURAL APPLICATIONS

Vision X Lighting offers a large increase in energy efficiency over older technologies while also increasing the safety and productivity of the working environment by producing 80% more light than traditional fixtures.

STAINLESS STEEL BRACKETS

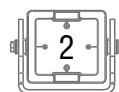
Each fixture can be upgraded to high-strength stainless steel brackets giving the light extra protection against salt water corrosion.

INCREASED PERFORMANCE

Vision X Lighting products achieve a long lifespan of 50,000+ hours. Certified by Intertek Laboratories and DesignLights Consortium (DLC).

ANTI-CORROSION

The marine grade polyester powder coating is designed for the exterior environment offering excellent long term light and weather resistance passing multiple chemical and durability tests.

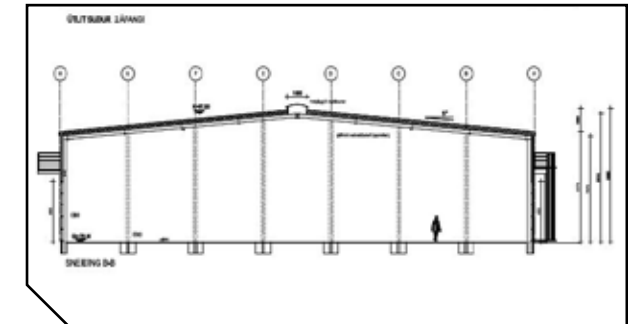


VXSTRUCTURAL.COM

SOLUTION PROCESS

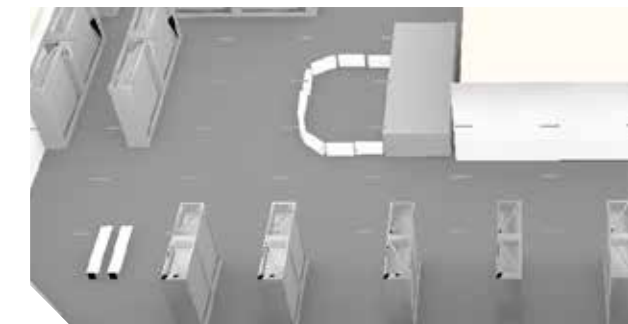
2D BLUEPRINT

Vision X Lighting begins each project with a customer provided blueprint to be retrofitted, then gathers the technical information for those structures.



3D MODEL

A 3D model is built to the customer's specifications, then carried over into the rendering.



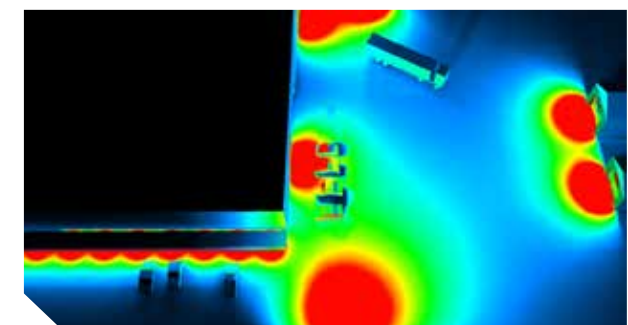
SIMULATION RENDER

A simulation rendering ensures the final product will meet the customer's lighting requirements.

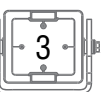


SOLUTION

Vision X Lighting creates a complete breakdown of the customer's specific needs to meet their safety and lighting requirements for an engineered solution.



HPS REPLACEMENTS



400-WATT HPS REPLACEMENT

Pulse Width Modulation | Electronic Thermal Management | Redundant Circuit Design | Extended Warranty



140-WATT HIGH BAY

- 400-Watt Metal Halide Replacement
- 18,000-21,000 Lumens, 5000K CCT
- 15.6 Grms Vibration Rating
- 3/4" NPT Quick Connect
- 360 Degree Fully Adjustable Mounting
- 90-305VAC, HV 180-528VAC
- IP-68, IP69K, UL 1598A Marine
- Beam Patterns Available: 10°, 25°, 40°, 60°, 90°, 180°

ITEM#: LSG0630xxxx
(High Voltage Available)

12.24" x 7.09" x 7.17"



Standard
Heavy Duty
Brackets

ITEM#: LSG0270180TRHDQC



Standard
Trunnion
Brackets
(Stainless Steel Available)

ITEM#: LSG0270180TR

Universal Slipfitting



Stainless Steel
Heavy Duty
Brackets

ITEM#: LSG0270180STRHDQC



ITEM#: LSG0630xxTRUSx
(2", 2.5", 3" Pole Mount Kits)

1000-WATT HPS REPLACEMENT

280-WATT HIGH BAY

- 1000-Watt Metal Halide Replacement
- 36000 - 42,000 Lumens, 5000K CCT
- 15.6 Grms Vibration Rating
- 3/4" NPT Quick Connect
- 360 Degree Fully Adjustable Mounting
- 90-305VAC, HV 180-528VAC
- IP-68, IP69K, UL 1598A Marine
- Beam Patterns Available: 10°, 25°, 40°, 60°, 90°, 180°

ITEM#: LSG0660xxSTRHDQC
(Heavy Duty Stainless Steel Brackets)



15.00" x 13.39" x 7.17"



High Voltage Available



ITEM#: LSG0660xx
(w/optics 10°, 25°, 40°, 60°, 90°)

ITEM#: LSG02140180
(180° Ultra Wide Beam Pattern)

ITEM#: LSG0660xxSTRHDQC

Stainless Steel
Heavy Duty
Brackets



Standard
Heavy Duty
Brackets

ITEM#: LSG0660xxTRHDQC

Mounting Solutions

Available with 140-Watt and 280-Watt fixtures.



Cobra head mount
suited for street and
parking lot lighting.

ITEM#: LSG0630xxCHM2
ITEM#: LSG0630xxCHM2.5
ITEM#: LSG0630xxCHMw3
(2", 2.5", 3" Diameter Cobra Head Mount Kits)
Part numbers listed for 140-Watt fixture



Easily and securely
mount to poles with
universal slip-fitter and
stainless steel bolts.

ITEM#: LSG0660xxTRUS2
ITEM#: LSG0660xxTRUS2.5
ITEM#: LSG0660xxTRUS3
(2", 2.5", 3" Diameter Pole Mount Kits)
Part numbers listed for 280-Watt fixture

Accessories



6.6' QUICK CONNECT CABLE
ITEM#: LAYUC2M



110V AC PLUG
ITEM#: P-NEMA110PLUG



240-277V AC TWIST LOCK PLUG
ITEM#: P-NEMA630P



SLIP FITTING
ITEM#: LAGU-x
2" Diameter : LAGU-S2
2.5" Diameter : LAGU-S2.5
3" Diameter : LAGU-S3



PENDANT MOUNT HOOK
ITEM#: LAG-PM



DUSK/DAWN SENSOR
ITEM#: LAG-DTD



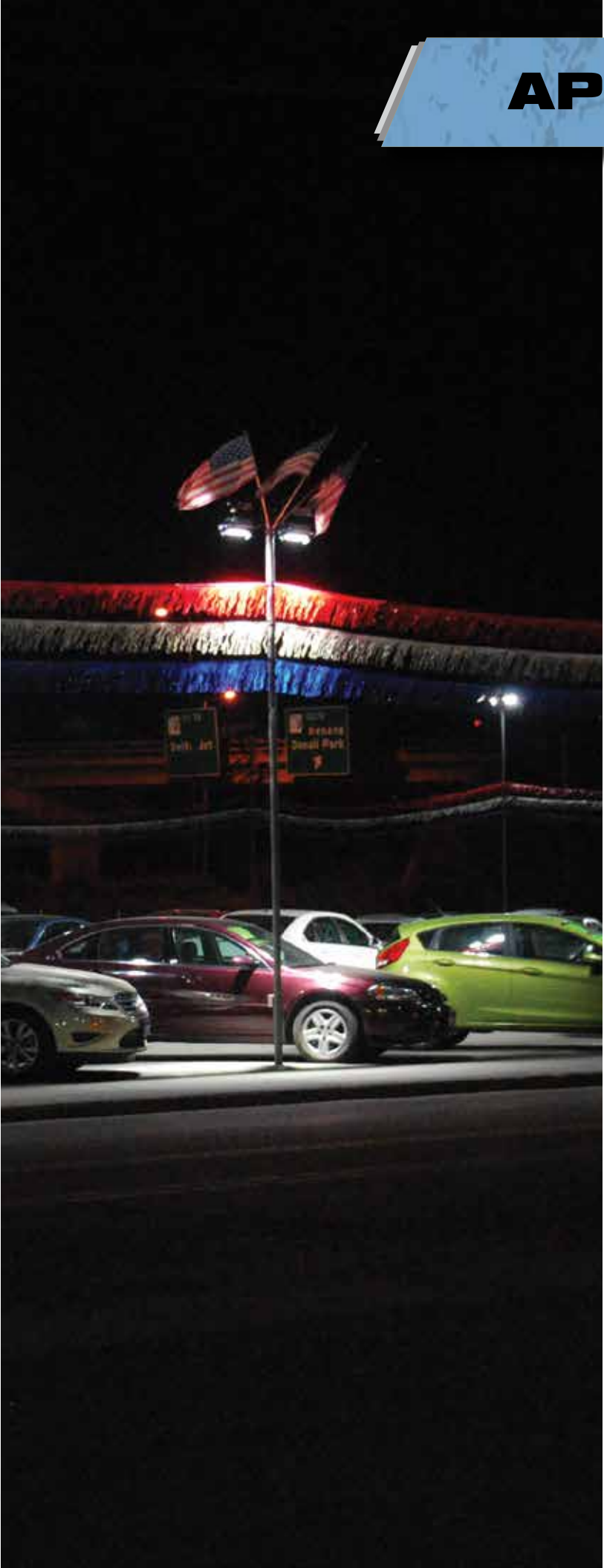
3/4" ADJUSTABLE SWIVEL
ITEM#: LAGSW34

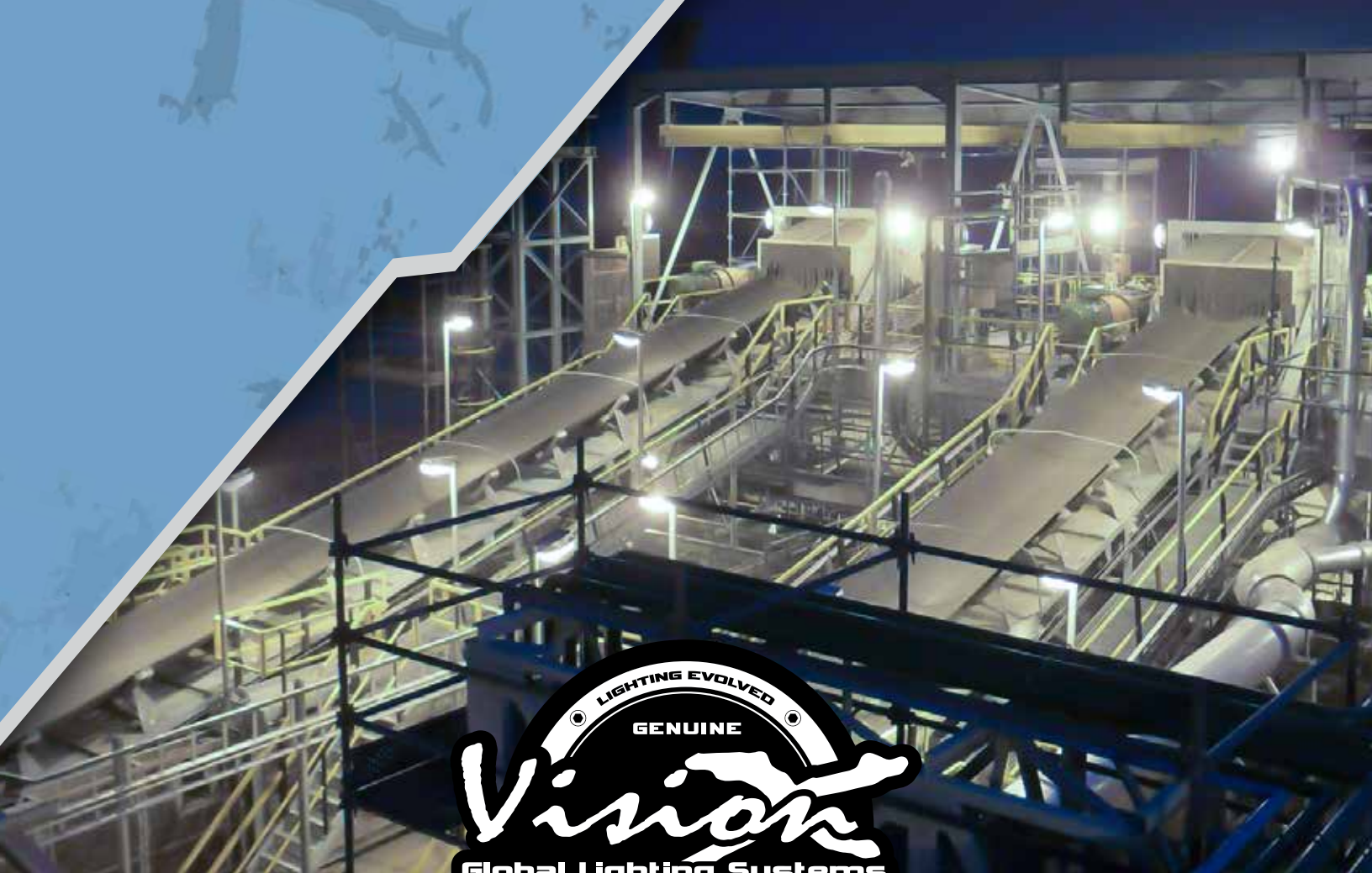


SURGE PROTECTOR
ITEM#: P-277VACSURGE
High Volt Available

APPLICATIONS

- WAREHOUSE
- HIGH MAST TOWER
- STORAGE
- RTG CRANE
- GANTRY CRANE
- PARKING GARAGE
- PARKING LOT
- SPORTS ARENA
- UTILITY WORK AREA
- MARINE VESSEL
- CONVEYOR BELT
- INDUSTRIAL FACILITY





NOTES:

VISION X USA

1601 Boundary Blvd
Auburn WA 98001
United States of America
253-218-2900

VISION X ASIA

23-7 Dongtansandan
9-gil Dongtan-myeon Hwaseong-si
Gyeonggi-do 18487, Korea
P: 82-32-515-4814