

LINEAR SERIES

VXSTRUCTURAL.COM



LED | LIGHTING CATALOG



LIGHTING SOLUTIONS

FOR STRUCTURAL APPLICATIONS

Vision X Lighting offers a large increase in energy efficiency over older technologies while also increasing the safety and productivity of the working environment by producing 80% more light than traditional fixtures.

STAINLESS STEEL BRACKETS

Each fixture can be upgraded to high-strength stainless steel brackets giving the light extra protection against salt water corrosion.

INCREASED PERFORMANCE

Vision X Lighting products achieve a long lifespan of 50,000+ hours. Certified by Intertek Laboratories and DesignLights Consortium (DLC).

ANTI-CORROSION

The marine grade polyester powder coating is designed for the exterior environment offering excellent long term light and weather resistance passing multiple chemical and durability tests.

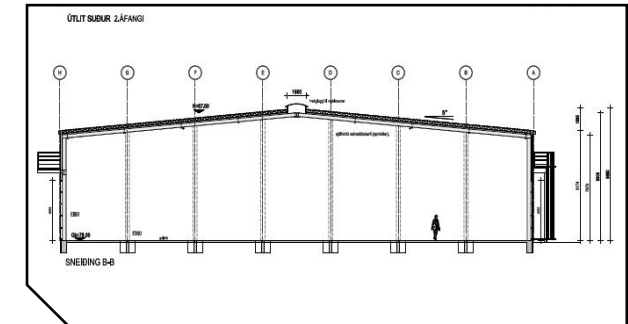


VXSTRUCTURAL.COM

SOLUTION PROCESS

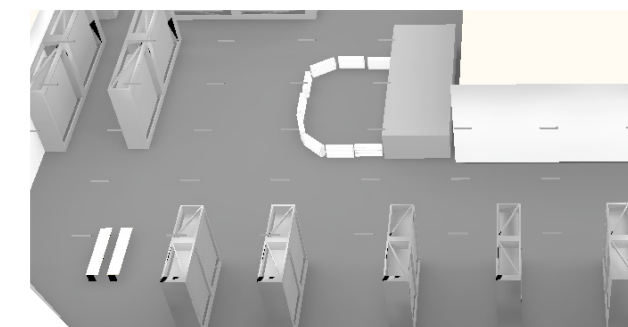
2D BLUEPRINT

Vision X Lighting begins each project with a customer provided blueprint to be retrofitted, then gathers the technical information for those structures.



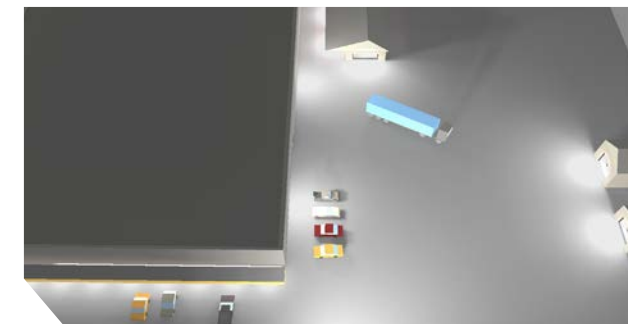
3D MODEL

A 3D model is built to the customer's specifications, then carried over into the rendering.



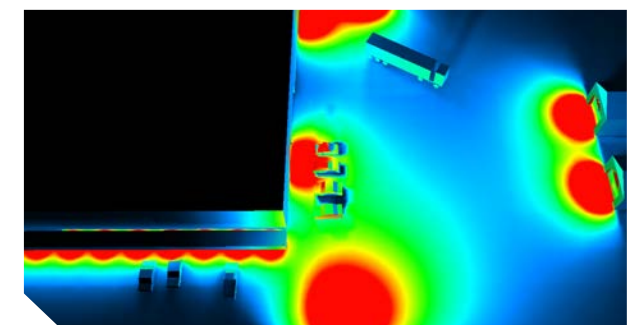
SIMULATION RENDER

A simulation rendering ensures the final product will meet the customer's lighting requirements.

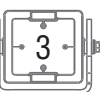


SOLUTION

Vision X Lighting creates a complete breakdown of the customer's specific needs to meet their safety and lighting requirements for an engineered solution.



LINEAR SERIES



LINEAR LIGHTING

Pulse Width Modulation | Electronic Thermal Management | Redundant Circuit Design | 5 Year Extended Warranty

1-FOOT LINEAR



- Flourescent Tube Replacement
- 4000 Lumens, 5000K CCT
- 30-Watt
- 8.7 Grms Vibration Rating
- 3/4" NPT Quick Connect
- 90-305VAC
- IP65 Rated Damp Location Fixture, IP66
- Beam Patterns Available: 180° Ultra Wide

ITEM#: **LLG0212180F**

(Stainless Steel Brackets Available w/ Quick Connect)

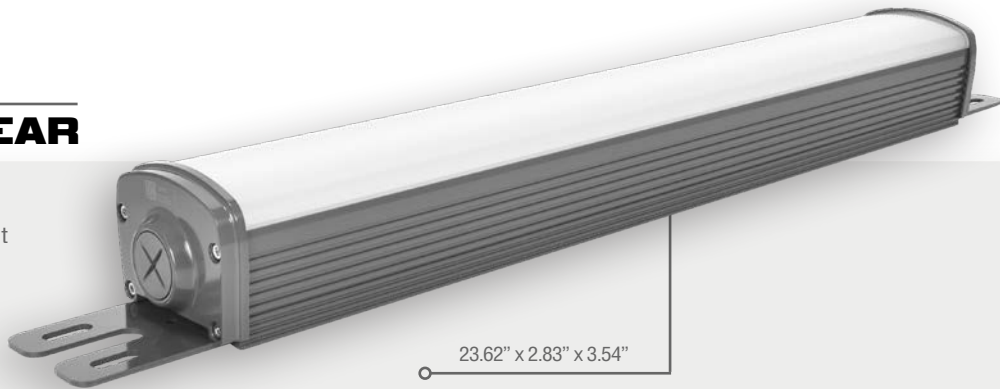
ITEM#: **LLG0212180FSRQC**



6.6' QUICK CONNECT CABLE
ITEM# : **LAYUC2M**



2-FOOT LINEAR



- Flourescent Tube Replacement
- 7800 Lumens, 5000K CCT
- 60-Watt
- 8.7 Grms Vibration Rating
- 3/4" NPT Quick Connect
- 90-305VAC
- IP65 Rated Damp Location Fixture, IP66
- Beam Patterns Available: 180° Ultra Wide

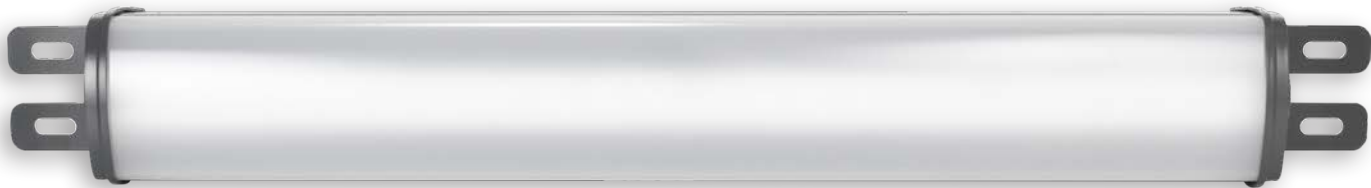
ITEM#: **LLG0221180F**

(Stainless Steel Brackets Available w/ Quick Connect)

ITEM#: **LLG0221180FSRQC**



6.6' QUICK CONNECT CABLE
ITEM# : **LAYUC2M**



LINEAR LIGHTING

Pulse Width Modulation | Electronic Thermal Management | Redundant Circuit Design | 5 Year Extended Warranty

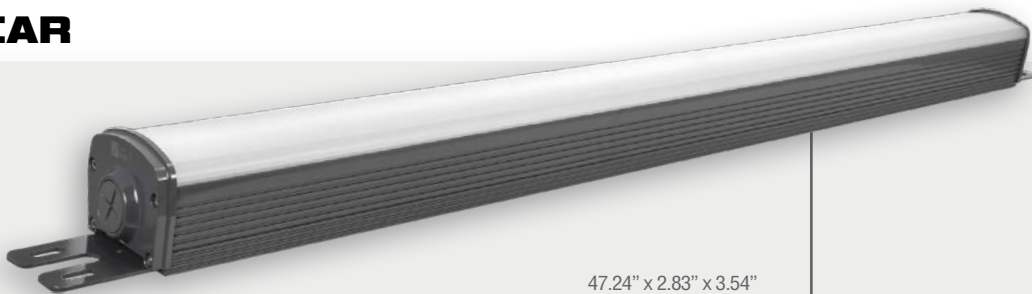
4-FOOT LINEAR

- Fluorescent Tube Replacement
- 13000 Lumens, 5000K CCT
- 100-Watt
- 8.7 Grms Vibration Rating
- 3/4" NPT Quick Connect
- 90-305VAC
- IP65 Rated Damp Location Fixture, IP66
- Beam Patterns Available: 180° Ultra Wide

ITEM#: **LLG0242180F**

(Stainless Steel Brackets Available w/ Quick Connect)

ITEM#: **LLG0242180FSRQC**



47.24" x 2.83" x 3.54"



6.6' QUICK CONNECT CABLE
ITEM# : **LAYUC2M**



Applications

Warehouse
Office Space
Storage
Retail Store

Parking Garage
Foyer
Hallway
Corridor

Utility Work Area
Marine Vessel
Commercial Kitchen
Cold Storage



Stainless Steel Brackets

Available For All Linears



(Stainless Steel Brackets Available w/ Quick Connect)

ITEM#: **LLG0212180FSRQC**

(Stainless Steel Brackets Available w/ Quick Connect)

ITEM#: **LLG0221180FSRQC**

(Stainless Steel Brackets Available w/ Quick Connect)

ITEM#: **LLG0242180FSRQC**

Built-in Battery Backup System Available

2-Foot | 4-Foot Linears Only



Available with 2-foot and 4-foot linears only, the emergency power supply operates LED lighting should normal power be lost. The BSL310SB senses the power failure and immediately begins driving the LED load in emergency mode at reduced lumen output for a minimum of 90 minutes.

ITEM#: **LBG0221180F**

ITEM#: **LBG0242180F**



(Stainless Steel Brackets Available w/ Quick Connect)

ITEM#: **LBG0221180FSRQC**

ITEM#: **LBG0242180FSRQC**



6.6' QUICK CONNECT CABLE
ITEM# : **LAYUC2M**



VXSTRUCTURAL.COM

LINEAR SERIES





NOTES:

VISION X USA

1601 Boundary Blvd
Auburn WA 98001
United States of America
253-218-2900

VISION X ASIA

23-7 Dongtansandan
9-gil Dongtan-myeon Hwaseong-si
Gyeonggi-do 18487, Korea
P: 82-32-515-4814

P: 888-489-9820
www.vxstructural.com