



MINING

SOLUTIONS



LED LIGHTING CATALOG
VISIONX**X**LIGHTING.COM



LIGHTING SOLUTIONS

FOR MINING CLASS VEHICLES AND EQUIPMENT

At Vision X Lighting, our mission is to enhance safety and boost productivity in the mining industry through advanced LED lighting solutions. By leveraging cutting-edge technology, we provide lighting that delivers up to 80% more illumination compared to traditional fixtures, significantly improving energy efficiency and transforming the working environment. Our solutions are designed to ensure that your team operates in a safer, more productive setting, allowing for better visibility and reduced operational risks.

PROVEN

Our products are purpose-built to withstand the harshest conditions found on mine sites, whether in extreme cold or intense heat. With a track record of reliability and durability in diverse environments, Vision X Lighting ensures that your lighting solutions perform consistently and effectively, no matter the challenges.

COMPETITIVE

Our extensive product range is designed to meet the unique lighting needs of any equipment across your site. Whether it's heavy-duty machinery, underground operations, or surface facilities, Vision X Lighting offers tailored solutions that enhance visibility and performance, setting us apart from competitors with our comprehensive and adaptable offerings.

GLOBAL

With a robust distribution network spanning across the globe, Vision X Lighting provides reliable, high-quality lighting solutions for any site, anywhere. Our international presence ensures that you receive the same superior product quality and support, whether you're operating in North America, Europe, Asia, or beyond.



VISIONXLIGHTING.COM

ENGINEERED LIGHTING SYSTEMS

TESTED FOR THE EXTREME

Tested in mining environments across the globe from arctic to desert conditions, our lights are engineered to withstand and thrive in the most difficult and extreme environments on the planet.

UNRIVALED RATINGS

High quality construction and components enable our lights to withstand massive vibrations with up to an industry leading 60 Grms rating virtually eliminating failures on heavy tracked equipment.

VOLTAGE PROTECTION

Our lights have huge voltage ranges and will not sustain accidental damage if the polarity to the light is reversed by any chance of incorrect installation.

OPEN PIT



HAUL TRUCKS
ROPE SHOVELS
LOADERS
DOZERS

HYDRAULIC SHOVELS
DRAGLINES
GRADERS
DRILL RIGS

UNDERGROUND



HAUL TRUCKS
JUMBOS
BOLTERS
MUCKERS

LOADERS
CONCRETE SPRAWLERS
GRADERS
UTILITY CARRIERS

STRUCTURAL



WORK SHOPS
WASH BAYS
ROASTERS
SX/EW

CRUSHERS
HAUL ROADS
EXTERIOR BUILDINGS
LOW BAY/MEZZANINE

SUPPORT EQUIPMENT



LUBE TRUCKS
WORK TRUCKS
CONVEYOR SYSTEMS
LIGHT PLANT RETRO FIT

TABLE OF CONTENTS

RECOMMENDED MINING LED LIGHTING

TREMOR SERIES
WORK LIGHTS
PG 8-9

BLACKTIPS HD
WORK LIGHTS
PG 10-11

PROSPECTOR SERIES
WORK LIGHTS
PG 12

DURALUX GEN II
WORK LIGHTS
PG 13

AC FLOOD SERIES
AREA LIGHTS
PG 16

AC INTERIOR SERIES
AREA LIGHTS
PG 17

KILL ZONE SAFETY
RED LIGHTS
PG 19

VEHICLE ID SERIES
ACCESSORY LIGHTS
PG 20

360° WARNING
BEACON LIGHTS
PG 21

LED MINING BAR
CUSTOMIZABLE
PG 22-23

MINING EQUIPMENT LIGHTING GUIDES

HAUL TRUCK LIGHTING GUIDE
+ ADDITIONAL SUPPORT EQUIPMENT
PG 6-7

ROPE SHOVEL LIGHTING GUIDE
+ ADDITIONAL PRODUCTION EQUIPMENT
PG 14-15

KILL ZONE LIGHTING GUIDE
+ RED LIGHTING KIT RECOMMENDATIONS
PG 14-15

LED LIGHTING ADVANTAGE PROGRAM



COST EFFICIENCY

LOWER MAINTENANCE COSTS:

Longer lifespan and greater durability reduce replacements and labor costs.

REDUCED ELECTRICAL STRAIN:

Lower wattage consumption reduces strain on electrical components, extending their lifespan.

REDUCED MAINTENANCE:

LEDs require less frequent maintenance compared to HID and halogen lights, leading to lower operational interruptions and higher cost savings despite higher initial investment.

IMPROVED PRODUCTIVITY:

Enhanced visibility and reduced fatigue boost productivity.

EASY INVENTORY MANAGEMENT:

Standardized solutions simplify inventory, reducing costs and logistics.

SAFETY FOCUSED

ENHANCED VISIBILITY:

Brighter, more focused light output improves visibility and reduces the risk of accidents and near-miss incidents.

REDUCED OPERATOR FATIGUE:

Natural daylight-like color temperature reduces eye strain and fatigue, enhancing concentration.

ANTI-GLARE OPTICS:

Reduces glare for oncoming traffic, enhancing overall visibility and safety.

SELECTIVE YELLOW LENSES:

Improve visibility in fog, snow, and dust by enhancing contrast and clarity.

REMOVES HARMFUL EFFECTS:

Compliant with IEC 62471, ensuring no risks to eyes or skin.

ENVIRONMENTAL BENEFITS

NO HAZARDOUS MATERIALS:

ROHS compliant, containing no lead or mercury.

LONGEVITY AND DURABILITY:

Extended lifespan reduces waste and environmental impact.

REDUCED CO2 EMISSIONS:

Lower energy consumption across fleets decreases greenhouse gas emissions.



HAUL TRUCK

LIGHTING GUIDE



1

**LED SPOT
HIGH BEAM**

PG 8-13

2

**ANTI-GLARE
LOW BEAM**

PG 8-13

3

**YELLOW ANTI-GLARE
FOG LIGHT**

PG 8-13

4

**LED FLOOD
WORK LIGHT**

PG 8-13



SCAN FOR ADDITIONAL
SUPPORT EQUIPMENT
LIGHTING GUIDES



HEAVY-DUTY DOZER



HEAVY-DUTY GRADER

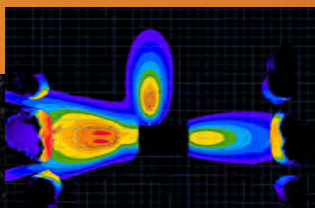
5 ID BOARD
2&3 DIGIT

PG 20

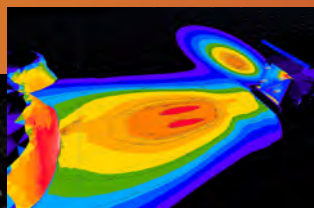
6 BEACON
WARNING LIGHT

PG 21

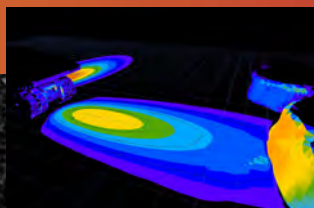
7 PARK BRAKE
INDICATOR LIGHT



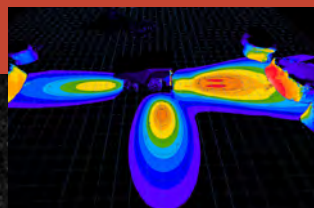
Pseudo Color Top Down



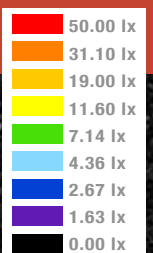
Pseudo Color Front View



Pseudo Color Rear View



Pseudo Color Side View



TREMOR SERIES

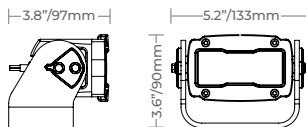
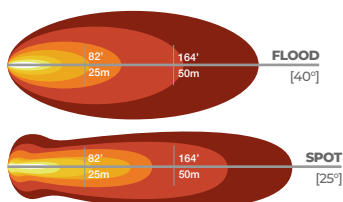
NEW - THE ULTIMATE SOLUTION

Introducing the Tremor Series Work Lights—engineered for versatility and durability, these lights are available in 3, 5, and 8 LED configurations with beam patterns of 25 and 40 degrees, making them ideal for a wide range of applications. Designed to provide powerful, reliable illumination, the Tremor Series ensures that your workspace is always brightly lit, no matter the challenge.

ITEM #: THB0603XX

TREMOR 3 LED

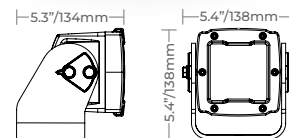
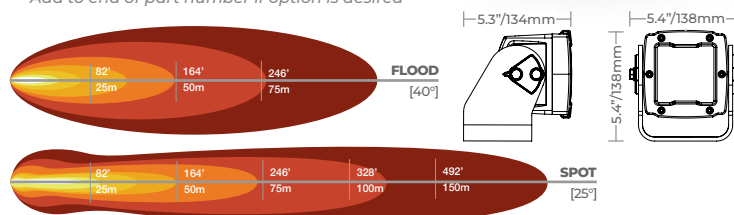
- 2,083 Lumens
- 18-Watt
- Amp Draw: 1.5A @ 12V
- 60 Grms Vibration Rating
- 9-33V DC Input
- IP68 / IP69K
- Beam Pattern: Spot **25°**, Flood **40°**
Replace XX with beam number



ITEM #: THB0605XX [30W] / THB0905XX [45W]

TREMOR 5 LED

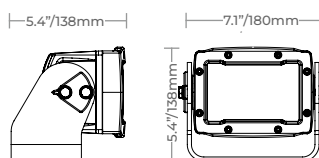
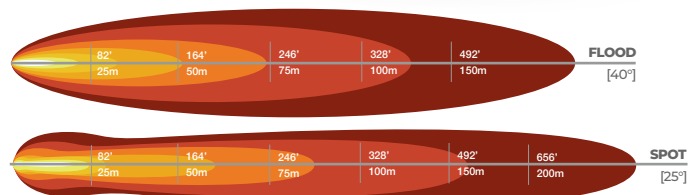
- 3,460 [30W] / 4,548 [45W] Lumens
- 30-Watt / 45-Watt
- Amp Draw: 2.5A @ 12V [30W]
3.7A @ 12V [45W]
- 60 Grms Vibration Rating
- 9-33V DC Input
- IP68 / IP69K
- Beam Pattern: Spot **25°**, Flood **40°**
Replace XX with beam number
- Options: **SY** Selective Yellow, **SYKOM** Selective Yellow Komatsu
Add to end of part number if option is desired



ITEM #: THB0608XX [48W] / THB0908XX [72W]

TREMOR 8 LED

- 5,719 [48W] / 7,188 [72W] Lumens
- 48-Watt / 72-Watt
- Amp Draw: 4.0A @ 12V [48W]
6.0A @ 12V [72W]
- 60 Grms Vibration Rating
- 9-33V DC Input
- IP68 / IP69K
- Beam Pattern: Spot **25°**, Flood **40°**
Replace XX with beam number



BENEFITS OF SELECTIVE YELLOW:

Selective yellow lighting improves visibility in challenging conditions like dust, fog, and snow while reducing eye strain for operators, making it ideal for harsh environments.

- Enhances contrast and clarity in low-visibility conditions.
- Cuts through dust and fog more effectively than white light.
- Reduces glare and eye fatigue during prolonged use.

TREMOR SERIES

ANTI-GLARE [AG]

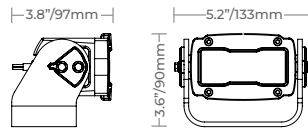
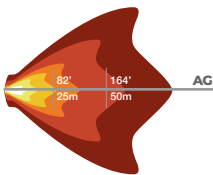
NEW - FOR ENHANCED PERFORMANCE

The Tremor Series now includes advanced anti-glare technology, which functions like a headlight with a sharp cutoff. This allows users, such as haul truck operators, to aim the light low enough to avoid blinding smaller vehicles, enhancing the safety of other drivers on the road. Additionally, the Tremor Series offers selective yellow options for improved visibility in foggy or low-contrast conditions, making it a top choice for professionals who require reliable lighting solutions in any environment.

ITEM #: THB0603AG

TREMOR 3 LED AG

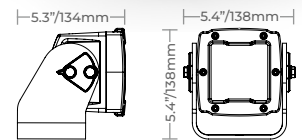
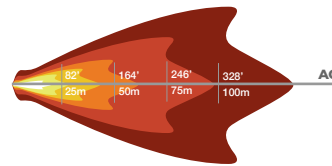
- 1,042 Lumens
- 18-Watt
- Amp Draw: 1.5A @ 12V
- 60 Grms Vibration Rating
- 9-33V DC Input
- IP68 / IP69K



ITEM #: THB0605XX

TREMOR 5 LED AG

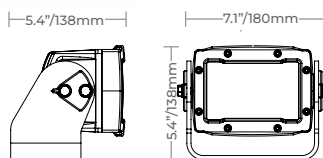
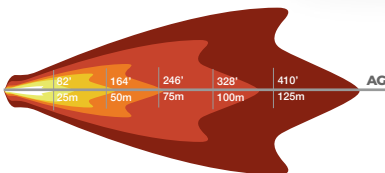
- 1,730 Lumens
- 30-Watt
- Amp Draw: 2.5A @ 12V
- 60 Grms Vibration Rating
- 9-33V DC Input
- IP68 / IP69K
- Options: **AG** Anti-Glare, **AGSY** Anti-Glare Selective Yellow, **AGKOM** Anti-Glare Komatsu, **AGSYKOM** Anti-Glare Selective Yellow Komatsu. Replace **XX** with desired option.



ITEM #: THB0608AG

TREMOR 8 LED AG

- 2,860 Lumens
- 48-Watt
- Amp Draw: 4.0A @ 12V
- 60 Grms Vibration Rating
- 9-33V DC Input
- IP68 / IP69K



WHAT ARE ANTI-GLARE OPTICS?

Anti-glare optics for LED lighting in mining vehicles reduce direct light intensity, minimizing glare and enhancing visibility and safety by evenly scattering light.

- Reduces glare for improved operator comfort.
- Ensures even light distribution in harsh environments.
- Enhances safety and visibility on mining vehicle.

BLACKTIPS HD SERIES

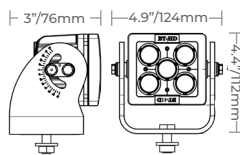
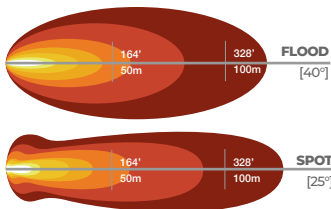
HALOGEN UPGRADE

The BT Heavy-Duty Series Work Lights are designed to replace 400 to 1,000 watt halogen lights, offering a powerful lumen output of 4,000 to 9,600. Built for durability and efficiency, these lights provide superior illumination while significantly reducing energy consumption, making them ideal for demanding work environments.

ITEM #: BHB0705XX

BLACKTIPS HD 5 LED

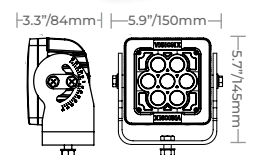
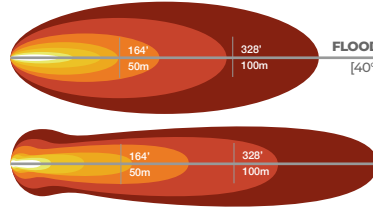
- 400-Watt Halogen Equivalent
- 4,000 Lumens
- 35-Watt
- 60 Grms Vibration Rating
- Amp Draw: 2.9A @ 12V
- 11-65V DC Input
- IP68 / IP69K, CISPR 25
- Beam Pattern: Spot **25°**, Flood **40°**,
AG Anti-Glare, **AGSY** Anti-Glare Selective Yellow
Replace **XX** with beam number



ITEM #: BHB707XX

BLACKTIPS HD 7 LED

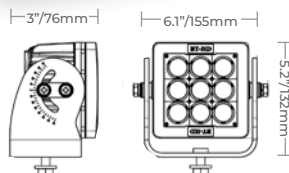
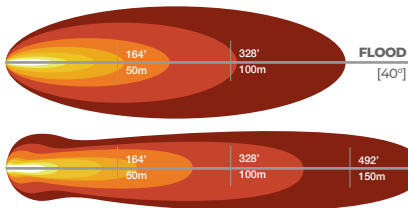
- 5,600 Lumens
- 49-Watt
- 60 Grms Vibration Rating
- Amp Draw: 4.08A @ 12V
- 11-60V DC Input
- IP68 / IP69K, CISPR 25
- Beam Pattern: Spot **25°**, Flood **40°**
Replace **XX** with beam number



ITEM #: BHB709XX

BLACKTIPS HD 9 LED

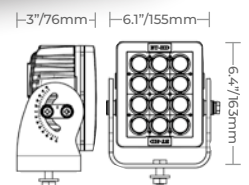
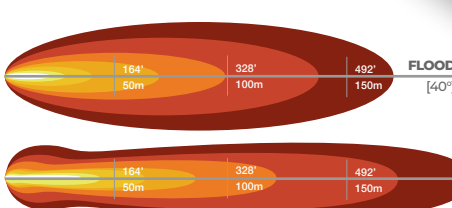
- 700-Watt Halogen Equivalent
- 7,200 Lumens
- 63-Watt
- 60 Grms Vibration Rating
- Amp Draw: 5.3A @ 12V
- 11-65V DC Input
- IP68 / IP69K, CISPR 25
- Beam Pattern: Spot **25°**, Flood **40°**
Replace **XX** with beam number



ITEM #: BHB712XX

BLACKTIPS HD 12 LED

- 1000-Watt Halogen Equivalent
- 9,600 Lumens
- 84-Watt
- 60 Grms Vibration Rating
- Amp Draw: 7.0A @ 12V
- 11-65V DC Input
- IP68 / IP69K, CISPR 25
- Beam Pattern: Spot **25°/25L** [horizontal],
Flood **40°/40L** [horizontal]
Replace **XX** with beam number



BLACKTIPS HD SERIES

ANTI-GLARE [AG]

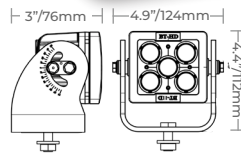
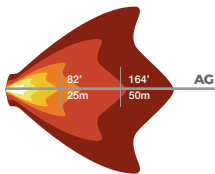
BUILT FOR DURABILITY

Opt for anti-glare technology with a sharp cutoff, allowing haul trucks to aim lights low and prevent blinding smaller vehicles, enhancing safety for all drivers. Alternatively, choose selective yellow for better visibility in foggy conditions. These durable, efficient lights reduce eye strain, lower energy use, and ensure safety and comfort in demanding environments.

ITEM #: BHB0705XX

BLACKTIPS HD 5 LED AG

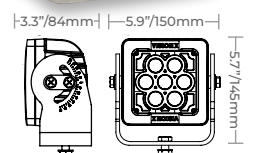
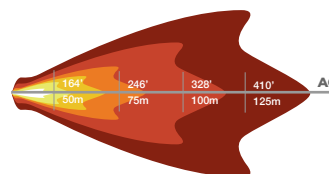
- 400-Watt Halogen Equivalent
- 2,000 Lumens
- 35-Watt
- 60 Grms Vibration Rating
- Amp Draw: 2.9A @ 12V
- 11-65V DC Input
- IP68 / IP69K, CISPR 25
- Options: **AG** Anti-Glare, **AGSY** Anti-Glare Selective Yellow
Replace XX with desired option



ITEM #: BHB707XX

BLACKTIPS HD 7 LED AG

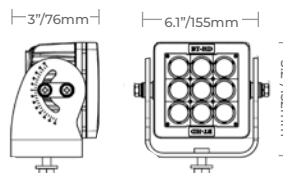
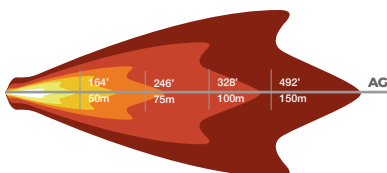
- 2,800 Lumens
- 49-Watt
- 60 Grms Vibration Rating
- Amp Draw: 4.08A @ 12V
- 11-60V DC Input
- IP68 / IP69K, CISPR 25
- Options: **AG** Anti-Glare, **AGSY** Anti-Glare Selective Yellow, **AGKOM** Anti-Glare Komatsu, **AGSYKOM** Anti-Glare Selective Yellow Komatsu
Replace XX with desired option



ITEM #: BHB709XX

BLACKTIPS HD 9 LED AG

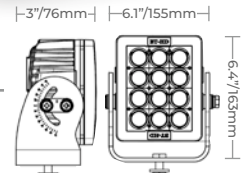
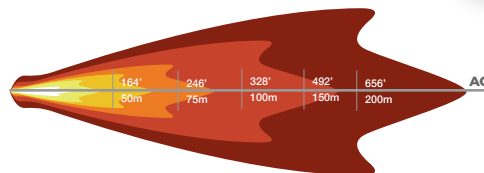
- 700-Watt Halogen Equivalent
- 3,600 Lumens
- 63-Watt
- 60 Grms Vibration Rating
- Amp Draw: 5.3A @ 12V
- 11-65V DC Input
- IP68 / IP69K, CISPR 25
- Options: **AG** Anti-Glare, **AGSY** Anti-Glare Selective Yellow
Replace XX with desired option



ITEM #: BHB712XX

BLACKTIPS HD 12 LED AG

- 1000-Watt Halogen Equivalent
- 4,800 Lumens
- 84-Watt
- 60 Grms Vibration Rating
- Amp Draw: 7.0A @ 12V
- 11-65V DC Input
- IP68 / IP69K, CISPR 25
- Options: **AG/AGL** Anti-Glare [horizontal]
Replace XX with desired option



PROSPECTOR SERIES

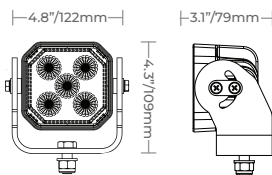
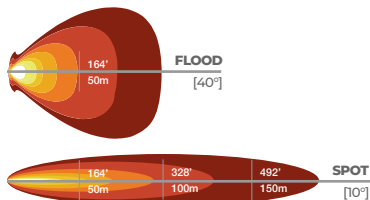
COST EFFECTIVE

The Prospector Series offers cost-effective beam performance with a simplified design and high-output 7W Cree LEDs delivering 8200 Effective Lumens. Available in 40° flood (yellow backplate) and 10° spot (blue backplate) beams, these lights are versatile and easily identifiable for various needs.

ITEM #: POB0705XX

PROSPECTOR 5 LED

- 4,550 Lumens
- 35-Watt
- Amp Draw: 2.92A @ 12V
- 21 Grms Vibration Rating
- 9-32V DC Input
- IP68 / IP69K, CISPR 25
- Beam Pattern: Spot **10°**, Flood **40°**
Replace XX with beam number



Spot 10° Beam

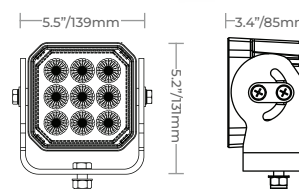
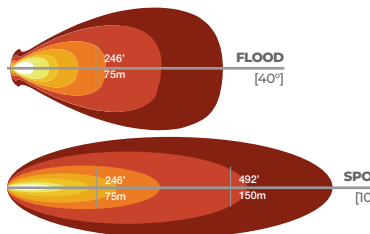
Flood 40° Beam



ITEM #: POB0709XX

PROSPECTOR 9 LED

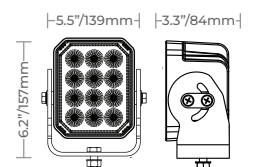
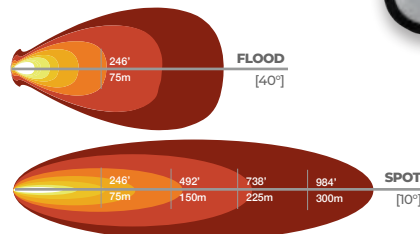
- 8,190 Lumens
- 63-Watt
- Amp Draw: 5.25A @ 12V
- 21 Grms Vibration Rating
- 9-32V DC Input
- IP68 / IP69K, CISPR 25
- Beam Pattern: Spot **10°**, Flood **40°**
Replace XX with beam number



ITEM #: POB0712XX

PROSPECTOR 12 LED

- 10,920 Lumens
- 84-Watt
- Amp Draw: 7.0A @ 12V
- 21 Grms Vibration Rating
- 9-32V DC Input
- IP68 / IP69K, CISPR 25
- Beam Pattern: Spot **10°**, Flood **40°**
Replace XX with beam number



DURALUX GEN II SERIES

POWERFUL OUTPUT

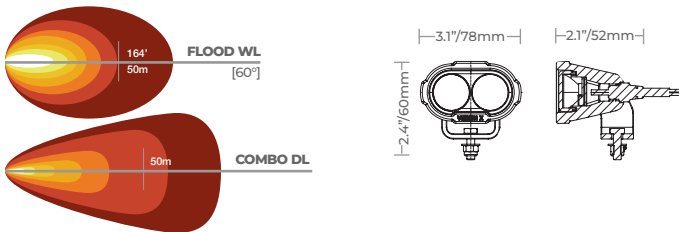
Introducing our Duralux Gen 2 Series Work and Driving Lights, designed as an introductory-level option for mining applications. Available in 2, 4, 6, and 9 LED options, these lights provide 2,000 to 3,696 lumens, offering reliable visibility and safety for essential operations.

ITEM #: DURA2-WL260 / DURA2-DL2CBSY

DURALUX GEN II 2 LED

- 1,400 Driving Lumens
- 1,800 Flood Lumens
- 16-Watt
- Amp Draw: 1.3A @ 12V
- 21.2 Grms Vibration Rating
- 9-32V DC Input
- IP68 / IP69K

• Beam Pattern: Flood 60° **Work Light [WL]**,
Combo Driving Beam with DRL [DL]
Add **SY** to end of item number for selective yellow,
only applies to driving beam

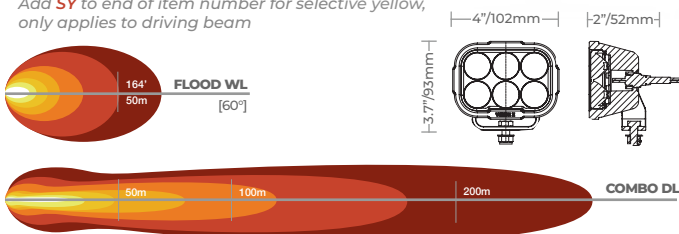


ITEM #: DURA2-WL660 / DURA2-DL6CBSY

DURALUX GEN II 6 LED

- 4,200 Driving Lumens
- 5,400 Flood Lumens
- 48-Watt
- Amp Draw: 4.0A @ 12V
- 21.2 Grms Vibration Rating
- 9-32V DC Input
- IP68 / IP69K

• Beam Pattern: Flood 60° **Work Light [WL]**,
Combo Driving Beam with DRL [DL]
Add **SY** to end of item number for selective yellow,
only applies to driving beam

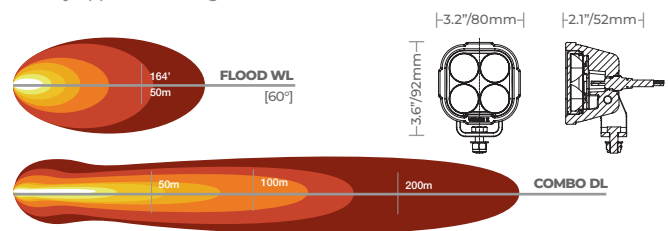


ITEM #: DURA2-WL460 / DURA2-DL4CBSY

DURALUX GEN II 4 LED

- 2,800 Driving Lumens
- 3,600 Flood Lumens
- 32-Watt
- Amp Draw: 2.67A @ 12V
- 21.2 Grms Vibration Rating
- 9-32V DC Input
- IP68 / IP69K

• Beam Pattern: Flood 60° **Work Light [WL]**,
Combo Driving Beam with DRL [DL]
Add **SY** to end of item number for selective yellow,
only applies to driving beam

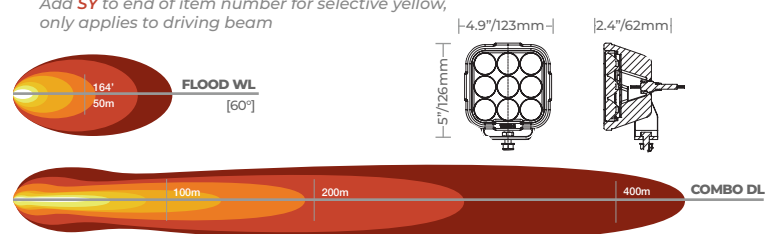


ITEM #: DURA2-WL960 / DURA2-DL9CBSY

DURALUX GEN II 9 LED

- 6,300 Driving Lumens
- 8,100 Flood Lumens
- 72-Watt
- Amp Draw: 6.0A @ 12V
- 21.2 Grms Vibration Rating
- 9-32V DC Input
- IP68 / IP69K

• Beam Pattern: Flood 60° **Work Light [WL]**,
Combo Driving Beam with DRL [DL]
Add **SY** to end of item number for selective yellow,
only applies to driving beam



ROPE SHOVEL LIGHTING GUIDE



1

180° LED FLOOD
WORK LIGHT

PG 8-13

2

LED FLOOD
WORK LIGHT

PG 8-13

3

SELECTIVE YELLOW
DIG LIGHT

PG 8-13

4

LED FLOOD
WORK LIGHT

PG 8-13



SCAN FOR ADDITIONAL
PRODUCTION EQUIPMENT
LIGHTING GUIDES



HEAVY-DUTY LOADER



HYDRAULIC SHOVEL

5 ID BOARD
2&3 DIGIT

PG 20

6 BEACON
WARNING LIGHT

PG 21



AC FLOOD SERIES

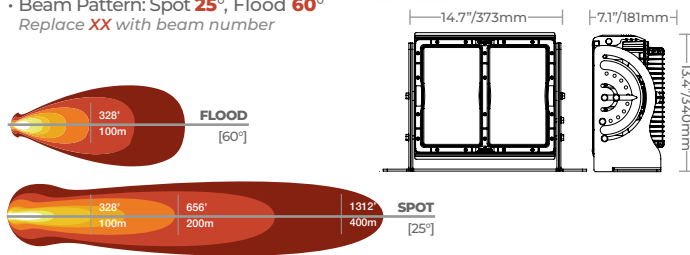
TOUGH ENGINEERING

Our AC Flood Area Lights are engineered for the mining industry and high-vibration environments, delivering powerful illumination with beam patterns ranging from 10 to 180 degrees. With an impressive output of 36,000 lumens, these lights provide exceptional visibility, ensuring safety and efficiency in the most challenging conditions.

ITEM #: LSG0660XXHVPH

AC FLOOD 280W

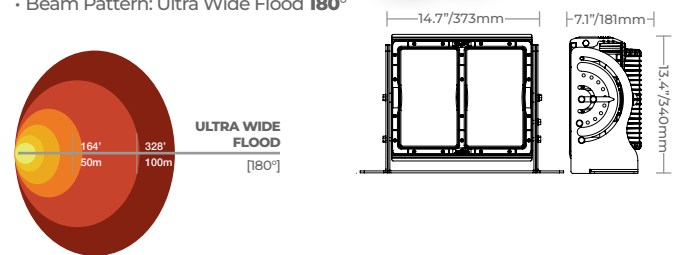
- 1,000-Watt Metal Halide Replacement
- 36,000 Lumens
- 280-Watt
- 15.6 Grms Vibration Rating
- Amp Draw: 2.55A @ 110V
- 90-305V AC | **HV** 249-528V AC
Add **HV** for High Voltage
- IP68 / IP69K, CISPR 25
- Beam Pattern: Spot **25°**, Flood **60°**
Replace **XX** with beam number



ITEM #: LSG0660180HVPH

AC FLOOD 280W

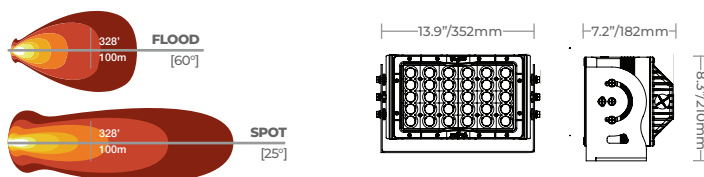
- 1,000-Watt Metal Halide Replacement
- 36,000 Lumens
- 280-Watt
- 15.6 Grms Vibration Rating
- Amp Draw: 2.55A @ 110V
- 90-305V AC | **HV** 249-528V AC
Add **HV** for High Voltage
- IP68 / IP69K, CISPR 25
- Beam Pattern: Ultra Wide Flood **180°**



ITEM #: LSG0630XXHVPH

AC FLOOD 140W

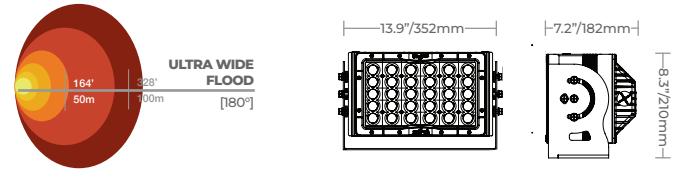
- 21,000 Lumens
- 140-Watt
- 15.6 Grms Vibration Rating
- Amp Draw: 1.22A @ 115V
- 90-305V AC | **HV** 180-528V AC
Add **HV** to end for High Voltage
- IP68 / IP69K
- Beam Pattern: Spot **25°**, Flood **60°**
Replace **XX** with beam number



ITEM #: LSG0630180HVPH

AC FLOOD 140W

- 21,000 Lumens
- 140-Watt
- 15.6 Grms Vibration Rating
- Amp Draw: 1.22A @ 115V
- 90-305V AC | **HV** 180-528V AC
Add **HV** to end for High Voltage
- IP68 / IP69K
- Beam Pattern: Ultra Wide Flood **180°**



AC INTERIOR SERIES

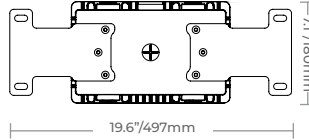
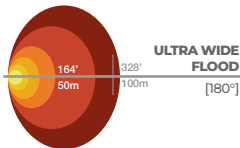
OEM REPLACEMENT

Our AC Interior Lights provide a direct OEM replacement option, featuring wide flood beam patterns for comprehensive interior illumination. Designed for ease of installation and superior performance, these lights ensure optimal visibility and a seamless fit in various applications, making them an ideal choice for upgrading interior lighting systems.

ITEM #: LSG0225180PH

AC JUNCTION BOX 50W

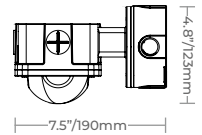
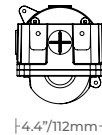
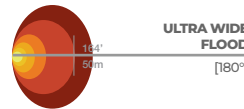
- Direct OEM Replacement
- 7,000 Lumens
- 50-Watt
- Amp Draw: 0.43A @ 115V AC, 0.22A @ 230V AC, 0.18A @ 277V AC
- 15.6 Grms Vibration Rating
- 90-305V AC
- IP68 / IP69K, CISPR 25
- Beam Pattern: Ultra Wide Flood **180°**



ITEM #: LSGSM40180PH

AC JUNCTION BOX 10W

- 100-Watt Halogen Bulb Replacement
- 1,000 Lumens, 5,000K CCT
- 10-Watt
- Amp Draw: 0.09A @ 115V AC,
- 15.6 Grms Vibration Rating
- 90-264V AC
- IP68 / IP69K, CISPR 25
- Beam Pattern: Ultra Wide Flood **180°**



KILL ZONE LIGHTING GUIDE



**4" RED SAFETY LIGHT
UM SERIES**

PG 19



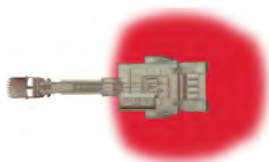
**16" RED SAFETY LIGHT
LP SERIES**

PG 19



**BOUNDARY SAFETY LIGHT
MV-1R SERIES**

PG 19



4" UM SERIES KIT

- 4X** Side Mounted on Hydraulic Staircases
- 4X** Side Mounted on Walkway Forward of Hydraulic Staircases
- 7X** Evenly Spaced Across the Top of Rear Counter Weight

16" LP SERIES KIT

- 2X** Right Side Bottom Level, Facing Down & Outward
- 5X** Top Corners & Center of Counter Weight, Facing Down & Outward
- 2X** Left Side Bottom Level, Facing Down & Outward



MV-1R KIT

- 2X** Side Mounted on Hydraulic Staircases
- 2X** Side Mounted on Walkway Forward of Hydraulic Staircases
- 3X** Evenly Spaced Across the Top of Rear Counter Weight



RED LIGHT SERIES

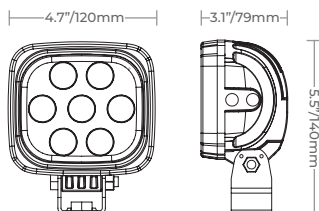
IF YOU'RE IN THE **RED**, YOU'RE DEAD

The Vision X Kill Zone system uses a RED LED elliptical pattern to outline a "Kill Zone" around the counterweight of any shovel or indicate equipment swing paths. This scalable system ensures clear boundaries for safety, warning anyone nearby with the motto: "If you're in the Red, You're Dead."

KIT #: XIL-UM44E3065RPSKZKIT

4" UM SERIES **RED LIGHT**

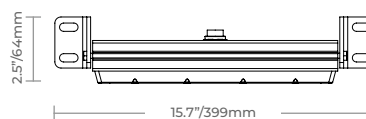
- 3,451 Raw Lumens
- 21-Watt
- Amp Draw: 2.97A @ 11.8V DC
- 21.2 Grms Vibration Rating
- 11-65V DC
- IP68 / IP69K
- Beam Pattern: Flood **30/65°**



KIT #: MIL-KZ1RPHSYS

MV-1R SERIES **RED BOUNDARY**

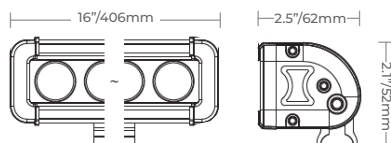
- 5,000 Raw Lumens
- 60-Watt
- Amp Draw: 0.5A @ 120V AC
- 21 Grms Vibration Rating
- 90-277V DC
- IP68 / IP69K
- Beam Pattern: Flood



KIT #: XIL-LP12E3065RPSKZKIT

16" LP SERIES **RED LIGHT**

- 5,916 Raw Lumens
- 36-Watt
- Amp Draw: 3.05A @ 11.8V DC
- 15.6 Grms Vibration Rating
- 9-32V DC
- IP68 / IP69K
- Beam Pattern: Flood **30/65°**



INPUT VOLTAGE: 90-305V AC
OUTPUT VOLTAGE: 45-53V DC
VIBRATION: 10 ~ 500Hz
INGRESS: IP67 / IP65

INPUT VOLTAGE: 90-305V AC
OUTPUT VOLTAGE: 24V DC
VIBRATION: 10 ~ 500Hz
INGRESS: IP67 / IP65



ITEM #:
XPC-PS185-48A
POWER SUPPLY



ITEM #:
XPC-PS185-24
POWER SUPPLY



ITEM #:
P-JBOXPSE
POWER SUPPLY HOUSING

VEHICLE ID SERIES

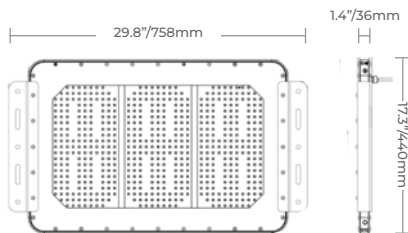
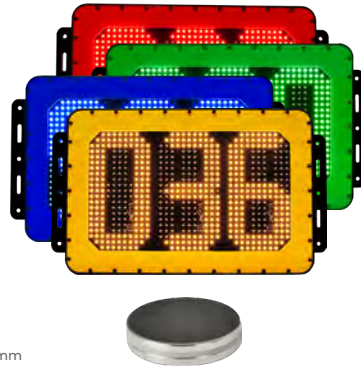
CRISP, BRIGHT LEDS

Our Vehicle ID Series ID Board Lights come in 2 and 3 LED options, with an additional drift strobe for enhanced vehicle identification. Designed for tough environments, these lights provide reliable visibility and ensure compliance with safety standards, making them a durable and essential choice for your fleet.

ITEM #: MIL-ID03X

ID BOARDS 3 LED

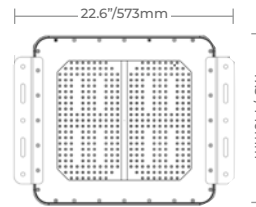
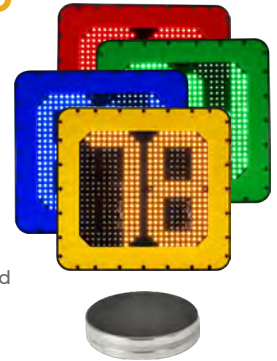
- 195 Crisp LEDs Per Digit
- Magnetic Sensor to Change Digits
- Engineered for 24/7 Operation
- 3-Digits
- 12-32V DC Input
- IP68 / IP69K, CISPR 25
- Available Colors: **Amber**, **Blue**, **Green**, **Red**
Replace X with color letter



ITEM #: MIL-ID02X

ID BOARDS 2 LED

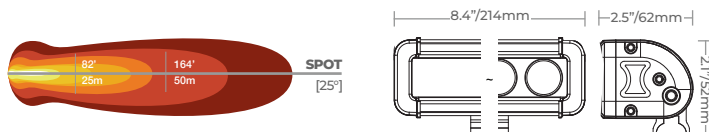
- 195 Crisp LEDs Per Digit
- Magnetic Sensor to Change Digits
- Engineered for 24/7 Operation
- 2-Digits
- 12-32V DC Input
- IP68 / IP69K, CISPR 25
- Available Colors: **Amber**, **Blue**, **Green**, **Red**
Replace X with color letter



ITEM #: XIL-LP625X.2HZ

DRIFT STROBE

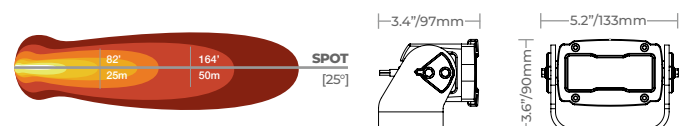
- Lumens vary by color
- 9-Watt
- 15.6 Grms Vibration Rating
- Amp Draw: 0.6A @ 12V
- 9-32V DC Input
- IP68 / IP69K
- Available Colors: **Amber**, **Blue**, **Green**, **Red**
Replace X with color letter



ITEM #: THB-0503X.2HZ

TREMOR DRIFT STROBE

- Lumens vary by color
- 9-Watt
- 15.6 Grms Vibration Rating
- Amp Draw: 0.6A @ 12V
- 9-32V DC Input
- IP68 / IP69K
- Available Colors: **Amber**, **Blue**, **Green**, **Red**
Replace X with color letter



MINING 360° SERIES

FULL 360° VISIBILITY

Our Mining Beacon Series includes heavy-duty beacons, Aerotech, and Tremor XD models in small and large sizes, all offering full 360-degree visibility. Designed for durability, these beacons feature rugged die-cast aluminum bases and shatterproof polycarbonate lenses, making them perfect for the demanding conditions of mining environments.

ITEM #: AERO-8501XX

AEROTECH MICRO BAR

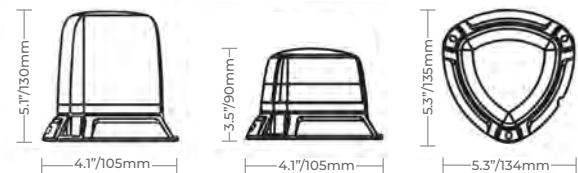
- Full 360° Visibility
- 7 Flash Patterns
- 10-80V DC Input
- ISO 16750-3, MIL-STD-801G
- IP67 / IP69K, CISPR25
- J845 Class 1, W3-1
- Cradle or Magnetic Mount
- Available Mount/Color: **5A** Amber/Cradle, **5AC** Clear/Cradle, **6A** Amber/Magnetic, **6AC** Clear/Magnetic
Replace XX with mount/color selection



ITEM #: AERO-85618A [DOUBLE] / AERO-85620X [QUAD]

AEROTECH BEACON

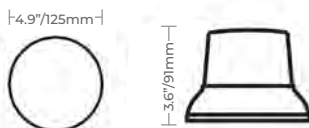
- Larger Profile for Increased Visibility
- 4 Flash Patterns
- MIL-STD-810G.514.6 Vibration Rating
- Durable Diecast Aluminum Base
- 10-33V DC Input
- IP67 / IP69K
- Quadra Stack Available Colors: **Amber, Blue, Green**
Replace X with color letter
[double stack available in amber only]



ITEM #: TREM-85250X

TREMOR XD SMALL BEACON

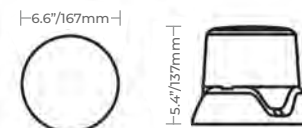
- Full 360° Visibility
- 6 Flash Patterns
- SAE Class I Compliant
- Diecast Aluminum Base
- 12-24V DC Input
- IP67 / IP69K
- Available Colors: **Amber, AC** Amber/Clear
Replace X with color letter



ITEM #: TREM-85246X

TREMOR XD LARGE BEACON

- Full 360° Visibility
- MIL-STD-801G
- SAE Class I Compliant
- Diecast Aluminum Base
- 9-80V DC Input
- IP69K, CISPR 25
- Available Colors: **Amber, AC** Amber/Clear, **Blue, Green**
Replace X with color letter



CUSTOMIZABLE LED MINING BAR



ITEM #: MIL-85246A.WL4MB

DURALUX GEN II + TREMOR XD LARGE BEACON

DURALUX GEN II 4 LED

ITEM #: DURA-WL4MB

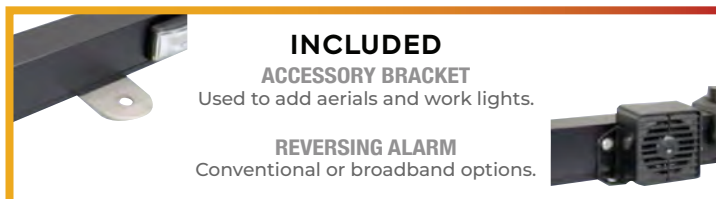
- 3,600 Lumens
- 32-Watt
- Amp Draw: 2.67A @ 12V
- 21.2 Grms Vibration Rating
- 9-32V DC Input
- IP68 / IP69K, CISPR 25
- Beam Pattern: Flood 60°



TREMOR XD LARGE BEACON

ITEM #: TREM-85246A

- Full 360° Visibility
- MIL-STD-801G
- SAE Class I Compliant
- Diecast Aluminum Base
- 9-80V DC Input
- IP69K, CISPR 25
- Amber Color



SCAN FOR ADDITIONAL
SUPPORT EQUIPMENT
LIGHTING GUIDES



UTILITY TRUCK



DURALUX GEN II
4 LED WORK LIGHT

AEROTECH
LED MICRO BAR

DURALUX GEN II
4 LED WORK LIGHT

ITEM #: MIL-85015A.WL4MB

DURALUX GEN II + AEROTECH MICRO BAR

DURALUX GEN II 4 LED

ITEM #: DURA-WL4MB

- 2,112 Lumens
- 20-Watt
- Amp Draw: 1.6A @ 12V
- 15.6 Grms Vibration Rating
- 11-65V DC Input
- IP68 / IP69K, CISPR 25
- Beam Pattern: Flood 60°



AEROTECH MICRO BAR

ITEM #: AERO-85015A

- Full 360° Visibility
- 7 Flash Patterns
- 10-80V DC Input
- ISO 16750-3, MIL-STD-801G
- IP67 / IP69K, CISPR25
- J845 Class 1, W3-1
- Cradle or Magnetic Mount
- Amber Color



INCLUDED

ACCESSORY BRACKET

Used to add aerials and work lights.

REVERSING ALARM

Conventional or broadband options.



OPTIONAL

RHINO™ ADAPTOR KIT

Allows the bars to be fitted to Rhino HD roof mounts. Kits include 45mm T-Bolts (2), 5mm spacer plate (2), washers and Nyloc nuts.



VISIONXLIGHTING.COM



A DIVISION OF

BROWN & WATSON INTERNATIONAL

1500 Ferntree Gully Road

Knoxfield VIC, 3180

Australia

+61 3 9730 6000 [International]

VISION X USA

1601 Boundary Blvd

Auburn, WA 98001

United States of America

+1 253-218-2900

VISION X ASIA

23-7 Dongtansandan

9-gil Dongtan-myeon Hwaseong-si

Gyeonggi-do 18487, Korea

+82-32-515-4814

MK-CATALOGMSR2

Copyright © 2025 Vision X Lighting

Revised: March 2025